

JFC 1100.

S ^ -6060 LA
1 150-1 1500.

1 150-1 1500.

[1,4,6-8].

10%

[2,3].

10%

1

24

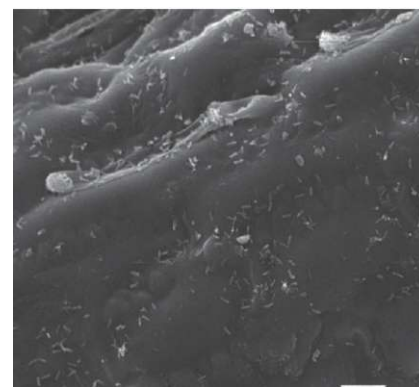
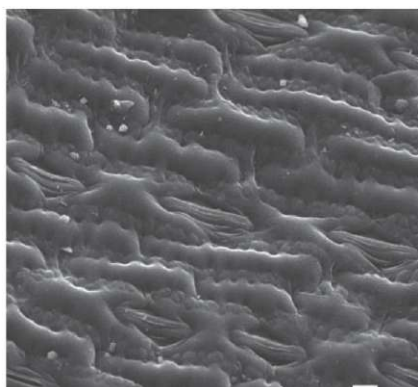
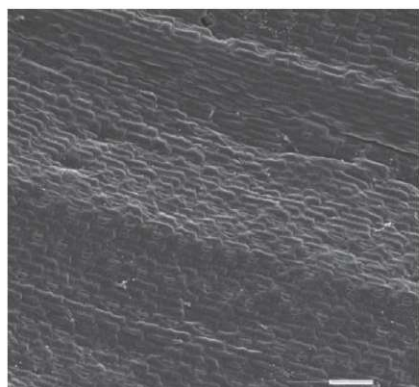
2010 .

(.). 5-

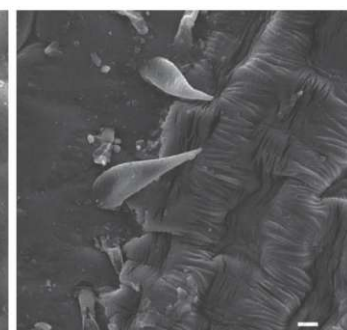
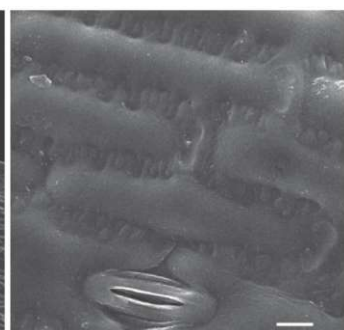
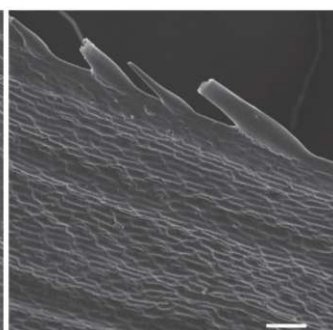
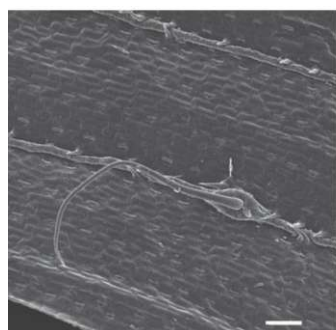
. 2).

$$\left(\begin{array}{c} \cdot \\ \cdot \\ \cdot \end{array} \right) \cdot \left(\begin{array}{c} \cdot \\ \cdot \\ \cdot \end{array} \right)$$

().

 $(\quad . 1 \quad).$
$$(\quad) (\quad . 2).$$

$$\vdots$$

(. 1 , . 2).



2. ()

 $\cdot 2).$

2).

(. 2).

(. 2)

$$(\quad)(\quad, \quad)$$

(.

3, 2011

61

(. 2); , -
 (. 1). , , : , ,
 , - 2. , , . -
 12%; 10% 8%, 12%,
 8%, - 1,5%. 10%
 10%
 1,5%.
 3. -
 1. « ».
 1. 5.
 272 , 1971. - / , 2010. - 496 .
 2. / 6. Chakrabarty C. *Stadies on Bupleurun L. (Umbelliferae)*
 : , 2001. - 556 . " - 1- . - in India II. SEM observations of leaf surface / C. Chakrabarty, P.K.
 3. / Mukherjee // Feddes repert. - 1986.-97, 7-8. - P. 489-496.
 " / 7. Classification and terminology of plant epicuticular waxes
 : , 2001. - 2. - 2008. - 620 . / W. Barthlott, C. Neithuis, D. Cytler [et al.] // Bot. J. Linn. Soc. -
 4. 1998. - 126, 3. - P. 237-260.
 / . . // 8. Daly G.T. Leaf-surface wax in *Poa colensoi*/G.T. Daly // J.
 65-75. Exeper. Botan. - 1964. - 15, 43. - P. 160-165.

29.06.2011

633.15:581.45_

615.322 : 615.451.16 : 661.91-404

B B EHH
 I EH M A AM

O EHIB BERBERIS VULGARIS

U.V. Karpiuk, V.S. Kyslychenko, Ia.V. Diakonova
**DETERMINATION OF SOME PARAMETERS OF
 STANDARDIZATION OF ZEA MAYDIS LEAVES**
Key words: zea mays, microscopic examination, scanning
 electron microscopy
 Some parameters of standardization of *Zea maydis* leaves
 by study of macroscopic characters and anatomy strUcture with
 determination of diagnostic signs by method of scanning electron
 microscopy, study of moisture, content of total ash and ash insoluble
 in 10% hydrochloric acid have been determined. Using method of
 scanning electron microscopy the main diagnostic features have been
 identified: the form and type of relief, the shape of epidermis cells,
 the type of stoma apparatus, the trichomes type and the type of wax.