

1 : 250 000

- 1
- 2
- 3
- 4
- 5
- 6
- 7
- 8
- 9
- 10
- 11
- 12
- 13
- 14
- 15
- 16
- 17
- 18
- 19
- 20

.1. - ;

1 - ' ('); 2 - ' (' ;

5 - ; 6 - ; 7 - (');

8 - ('); 9 - ; 10 - ' ;

11 - ' ; 12 - ; 13 - ; 14 - ; 15 - - ;

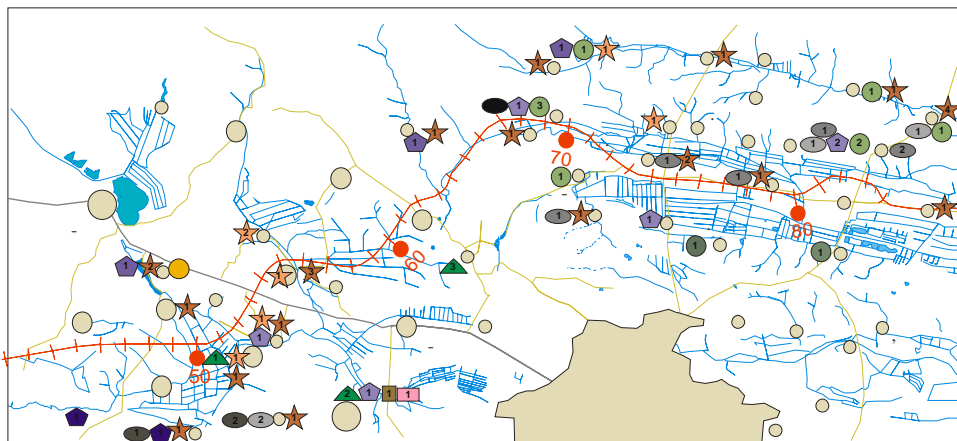
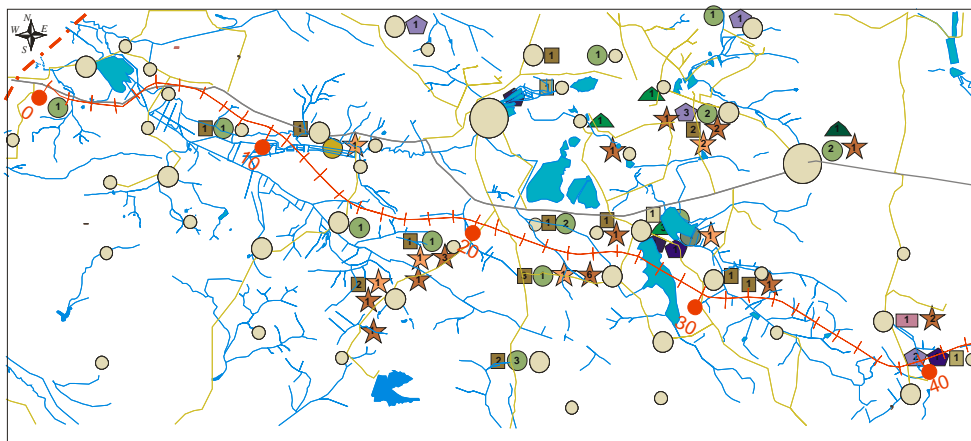
16 - ; 17 - (-10); 18 - - ;

19 - ; 20 - .

1600 1787 .. , - (.), - 1516 .
 (1781).
 1720–1909 .
 (1560) .
 (1654) (. 2).
 2

		-
	1813	
	1802	
	1821	
	1560	
	1654	
	1870	
	1852	
	1700	
	1872	
	1912	
	1812	XVII .
	1766	
	V .	
	1837	
	1830	
	1808	
	1861	
	1909	
	1879	
	1750	
	1842	
	1889	

(1886) - ,
 (1897).
 (1538), - - (XVII .)
 (.), - :
 (1639) .



1 : 250 000

- 1 ▲ 2 ▲ 3 ● 4 ● 5 ● 6 ▲ 7 ▲ 8 ▲ 9 ▲ 10 ■ 11 ■ 12 ■ 13 ● 14 ● 15 ● 16 ■ 17 ■
 18 ★ 19 ★ 20 ● 21 ● 22 ⊕ 23 24 - - 25 — 26 — 27 + + + 28 50 29 —

.2. - , - :
 1- (40-12 . . .); 2- (-VI . . .); 3- (IV-II . . .); 4- (VI-VI . . .); 5- (XXVII-XXXV . . .); 6- (. . .); 7- (. . .); 8- (. . .); 9- (. . .); 10- (-VIII . . .); 11- (XIV-VI-V . . .); 12- (VII-VI . . .); 13- (VII-III . . .); 14-

, - , , . 100
[8].

1. : [] / - , 2007. - 2. - 243 .
2. : [] / [. . , . . ,]. - , 2000. - 2. - 363-366.
3. : [] . - : http://decerkva.org.ua/lvi_index.html.
4. : 360-92** : 1 2011 . - , 2011. - 6 .
5. // /
6. , . - , 1993. - 58 .
/ . //
7. . - 2006. - 9. - 222-226.
- 1997 . : [] : 821: 4 1997 . -
: <http://zakon4.rada.gov.ua/laws/show/821-97-%D0%BF>.
8. - . -
() / . . . , . . . // . - , 2001. - 41 .

:
18.09.2013
30.09.2013
10.10.2013

**CULTURAL-ARCHITECTURAL AND HISTORICAL-ARCHAEOLOGICAL
MONUMENTS WITHIN THE LIMITS OF TRANSPORT EUROCORRIDOR
LVIV-KRAKOVETS AND ADJACENT TERRITORIES**

Ivan Voloshyn¹, Yulia Chykailo²

¹ *Lviv State University of Physical Culture,
T. Kostyushko Str., 11, UA – 79007, Lviv, Ukraine*

² *Ivan Franko National University of Lviv,
P. Doroshenko Str., 41, UA – 79000 Lviv, Ukraine,*

The main architectural monuments of national and local significance within eurocorridor Lviv–Krakovets was described. The features of their distribution within 6 km zone near road were analyzed. The maps of cultural-architectural (church, belfry, monuments and so on) and historical-archaeological monuments in Yavoriv, Gorodok, Zhovkva and Kamenka-Bug areas were compiled.

Keywords: transport eurocorridor, cultural and architectural attractions, historical and archaeological monuments.