

- B.M ,
-

B a n m

PHX XP I

^

X HC H , B

XB

77 (45,8%). 20 58

() , () [11, 13, 16, 17].

() [4, 5, 8, 19, 20].

() ,

« » [14, 19, 20].

0,2 3-4 20-25 0,5 3

13.06. 2005 . 271,

[1], [2] 13.06. 2005 . 271,

[6, 15]

« » [7], [3] ():

« »

() [18].

() [1]. N° /5383/01/01) (5,8%) ,28 (32,6%) 53 (61,6%) 56

16.11.2006 . 758 [1]. (68,3%) ,22 (26,8%)

() 4 (4,9%)

() 27 , 86 (51,2%)

« » (0109 05265) ; 2-3

» (I . 56 (33,3%) 1,12.

0108 09463).

10-15 . 1

1,96.

II . 26 (15,5%)

168

91 (54,2%)

1,42. III 3 , -
 / , / « » -
 I (- « » -
 os (- 5 -
 , ,). -
 () (L) ()
 () (). II [11]. , -
 - ALOKA SSD 630
 (10,1%) (), « »; 17 - ().
 Athlon 3600+ AMD
 III Microsoft Office 2005,
 « » Microsoft Excel Stadia 6.1 / prof Statistica,
 [12].
 () ,
 (), (), I , -
 ().
 (, 15 60 (P<0,05).
) [9, 10]. ().
 « ».
 () ,
 (. 1).

	(n=30)	I (n=86)	(n=56)	(n=26)
:				
' ,	25,7±1,	,4±1,8*	18, ±1, *	2 ,1±1,7
, .	20, ±1,0	17,6±2,8	28,6±1,1*	24, ±1,9
/5 .	6,9±0,4	9,5±0,5*	,6±0,2*	6,2±0,
:				
, .	4,2±0,	2,8±0,1*	6,5±0,5*	4, ±0,4
:				
, .	, ±0,2	4,7±0,2*	4,6±0,1*	4,5±0,1*
' ,	4,1±0,	4,5±0,	4,2±0,4	4,4±0,2
:				
, .	25,6±1,4	7, ±1,7*	14,5±1,2*	22,8±1,9
' ,	64,8± ,6	60,5±2,5	70,6±2,	61,1±1,9
, /5 .	12,7±1,2	7, ±1,0*	24,7±1,8*	1 ,4±1,9
' :				
, .	5 ,2± ,2	55,6±4,8	58,4±5,7	57, ± ,9
' ,	9 ,6±5,8	98, ±5,7	96,2±6,4	90,6±6,
, /5 .	8,6±2,	8,8±0,6	8,2±2,0	7,9±1,
%	57, ±1,1	120,5± ,8*	,2±1,2*	58,9± ,6

*—

(<0,05)

III (. 1).

(. 1).

II (. 1).

(<0,05).

(<0,05).

III (. 1).

(. 1).

II I (<0,05)

II I (,) (,).

III (. 2).

(- . + -1)

4-8

-1 I (.),

(101 ,) 10 . 60,1%

(- . + -1)

4-8

(. 1).

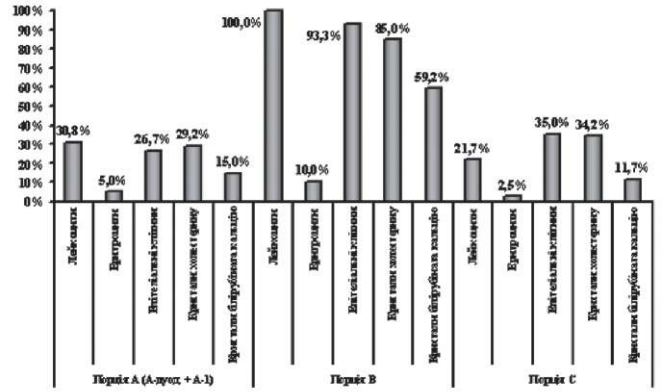
I (. 1),

(. 1).

I (. 1).

(101 ,) 10 . 60,1%

	-	+	-1	
(=168)				
:				
%	68,4	6,7		70,8
%	31,6	93,3		29,2
	1,015-1,017	1,040-1,055		1,015-1,023
(=30)				
:				
%	100	100		100
%	0	0		0
	1,008-1,012	1,026-1,038		1,008-1,015



.1.

(10,1%), 9 (5,3%) - (. 1).

4 (2,4%) - . , 32,7% (55)

(- . + -1).

(. 1).

()

15 . 60 . 3.

3

	(=30)	I (=86)	(=56)	(=26)
'	85,3±2,2	118,3±2,1*	78,6±2,8	95,6±4,7
' 15 .	60,4±2,4	108,7±3,8*	48,4±2,3*	70,3±4,6
' 60 .	48,4±3,2	82,3±4,1*	29,6±2,8*	52,7±3,9
	1,82±0,04	1,45±0,02*	2,58±0,03*	1,86±0,05

*: - (<0,05)

I , II III () -

15 . 60 . (. 3). (- 27,9±1,1, - 22,9±2,1; <0,05).

I (. 2).

II (. 3).

II

3 . 2

(. 2).

5,9%

3),

1 $4,6 \pm 0,1$. $3,5 \pm 0,1$ ($< 0,05$).

$14,7 \pm 0,9$ /5 . ($< 0,05$).

$99,9 \pm 10,7\%$.

$7,2 \pm 0,9$ /5

$122,3 \pm 3,8\%$

$3,5 \pm 0,1$ /5 . $5,8 \pm 0,1$
 $6,6 \pm 0,4$. $3,9 \pm 0,2$..

1, $4,7 \pm 0,1$. $3,1 \pm 0,1$..
 $24,8 \pm 1,7$ /5 . $15,8 \pm 1,3$ /5 ..
 $32,8 \pm 1,2\%$ $58,3 \pm 1,1\%$ ($< 0,05$).

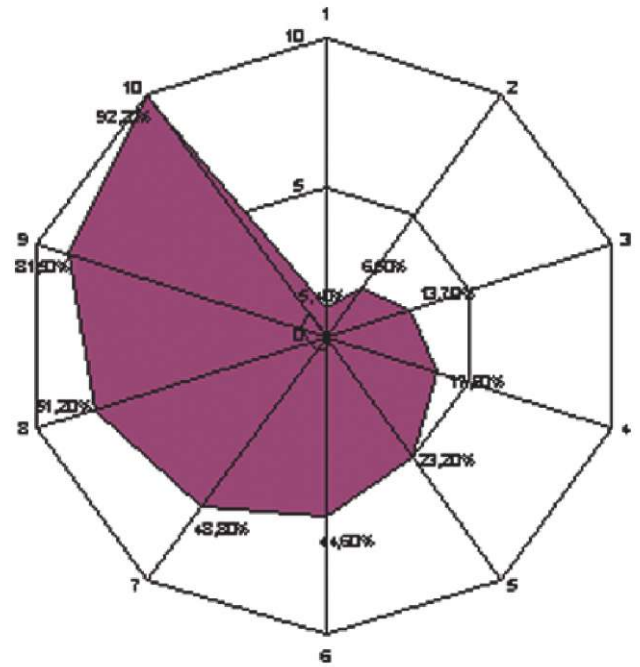
$25,1 \pm 1,6$ /5 . $18,1 \pm 1,3$ /5 . ($< 0,05$).

— 70,0%

43,6%

90,0%

78,3%



.2.

1-

4-

;7-
;9-

;3-

;5-

;8-

;6-

;10-

8,3%

2,4

(. 3).

4,9%

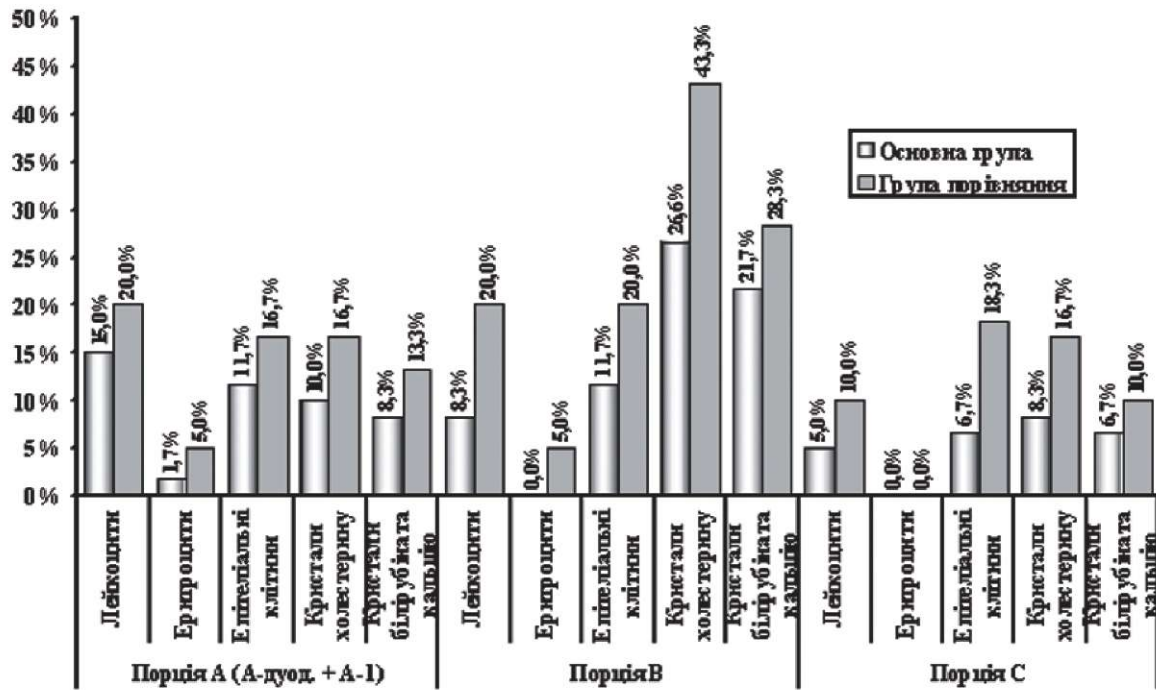
— 20,0% $11,7\%$

1,7

1,3

(. 3).
1,6

(. 3).



3.

(3).

1.

II

1,5
- 2,9

- 1,3

23,9±1,2

(- 27,3±0,6 (>0,05),

<0,05).

I

(1),

III

2.

1,9

5.

XBX,

3.

XBX,

6.

4.

I

III

XriX,

15 . 60 .

7.

I

II

XBX,

1. : 16.11.2006 758. / ... // . —1990.—

2. . . . 2. — .63-67. / ... //

3. ; : / ... ,2005. -456 11. . . . A.

4. // -2005. - .8, / 12-15. . . . 2006. -416 . / .A. . . . : Am o ,

9.-6-9. // -2006. - 12. . . . ,2002. -160 . / ,A. .

5. / (6). - .56-59. . . . // 2006-2008 .. /

6. / -2006- 2- .94-96. 14. . . . -2010. - 2

7. . . . (scolymus L.) 15. . . . -2002. - 4. - .4-12. , -A. Ammm //

36. // ; ; ,2006. - .6(75). - .17- 16. Elwood D.R. Cholecystitis / D.R. Elwood // Surg. Clin.

7. « » 17. Nesland J.M. Chronic cholecystitis / J.M. Nesland // Ultrastruct. Pathol. -2004. - V. 28, 3. -P. 121-123.

8. // -2008. - .11, / 1. - .31-36. 18. Weisell R.C. Body mass index as an indicator of obesity/ R.C. Weisell//AsiaPac. J. Clin. Nutr. -2002. - Vol. 11. - .681-684.

9. / -2007. - 5/6. - .53-54. // 19. Wilborn . Obesity: prevalence, theories, medical consequences, management, and research directions/ . Wilborn, J. Beckham, B. Campbell//J. Int. Soc. Sports. Nutr. -2005. - Vol. 2 (2). -P. 4-31.

10. . . . ,2003. -96 20. World Health Organization Global Strategy on Diet, Physical Activity and Health. Information sheet on obesity and overweight, 2 p. (http://www.who.int/dietphysicalactivity/publications/facts/obesity/en/; http://www.who.int/dietphysicalactivity/media/en/gsfsobesity.pdf.

31.03.2011

616.36-002-08+616-056.52-08

V.N. Kononov
INFLUENCE OF COMBINATION METABOLIC
ACTIVE PREPARATION GLUTARGIN AND
PHYTOPREPARATION ARTICHOLOL AT FUNCTIONAL
STATE OF GALLBLADER AT THE PATIENTS WITH
CHRONIC UNCALCULOSIS CHOLECYSTITIS COMBINED
WITH OBESITY

Key words: chronic uncalculosis cholecystitis, obesity, glutargin, artichol, treatment

The influence of combination metabolic active preparation glutargin and phytopreparation articholol at functional state of gallblader at the patients with chronic uncalculosis cholecystitis combined with obesity was studied. It was set that application of glutargin and artichol combination provided an essential improvement of indices of multifractional duodenal intubation and dynamic sonography.

616.22:612.035:159.9.018

1
2
1
2
1

2
3

() [16].

60-80% [22]. () [17].

[3, 8]. (), (), () [8, 17].

[3].

170 200 HCV

75-85% () [24].

[3]. [1] [7].

() [3, 8].

(), [2].

[1, 2].