

CD8 -

12-

« , 5/7.

PECULIARITIES OF EXPRESSION OF CD8 T-CELL IN A SKIN AND DUODENUM AT PATIENTS BY PSORIASIS ASSOCIATED WITH GLUTEN ENTEROPATHY

Yasser Khaled Abdel Karim Masadeh, O. Pritulo, T. Filonenko

SUMMARY

36 is inspected patients by psoriasis with the index of PASI from 3 to 27 marks which had a positive reaction at determination of title of antibodies to endomisium (EMA) class of IGA. At the endoscopic and histological analysis of duodenum mucous membrane are selected 3 groups of patients by psoriasis and celiac disease depending of stage of celiac disease; 1group (n = 17) is the infiltrative stage, 2 group (n = 12) - hyperplastic. 3 group (n = 7) is the atrophy stage. Increase of amount of CD8+ T-cell in inflammatory infiltration of duodenum mucous membrane and a skin is an important moment in understanding of pathogeny of autoimmune process at psoriasis associated with gluten enteropathy. A presence of interepidermal CD8+ T-cell is the histological feature of psoriasis defeat of skin at patients with gluten enteropathy.

CD8 -

12-

i , . . . , . . .
36 PASI 3 27 ,
() IGA.
3
:1 12- (n = 17) - , 2 (n = 12) - . 3 (n = 7) -
12-
CD8+ -
CD8+ -
:
-
-
-
(), [3,6,8,12,22], :
;
-
-
-
tTG ;
IgA [1,8,9,10,16,18,21].
-
-
-
12-
3-6 [3,6,11,13,14,17].
[18,21].

- , , () -
 - [15],
 12- CD8 (Clone 8/144) (DAKO)
 EnVision™ FLEX+, Mouse, High pH
 (Link), Code K8012 DAKO.
 [2,13,17,21,22].
 , . 3
 200.
 CD4+ 1 2 . -
 CD8+ OLYMPUS C 5050Z, -
 «Olympus CX-41». -
 [2,3,13,17]. -
 12- -
 (). 90- -
 «MedStat» (MS0011) -
 [11,20]. D8+ « », . -
 W - , -
 W- -
 [21]. -
 . -
 [5]. -
 - GD8 -
 12- -
 (n = 17). 12 7 -
 PASI 3 27 36 , -
 () IgA -
 (1:40) Marsh [20]: - 1
 (1:160). - 3 - 2 -
 - 3 . -
 , -
 CD8+ -
 CD8+ .
 312 08.05.2009 .
 , CD8+ .
 [7]. (1,50±0,61 -) -

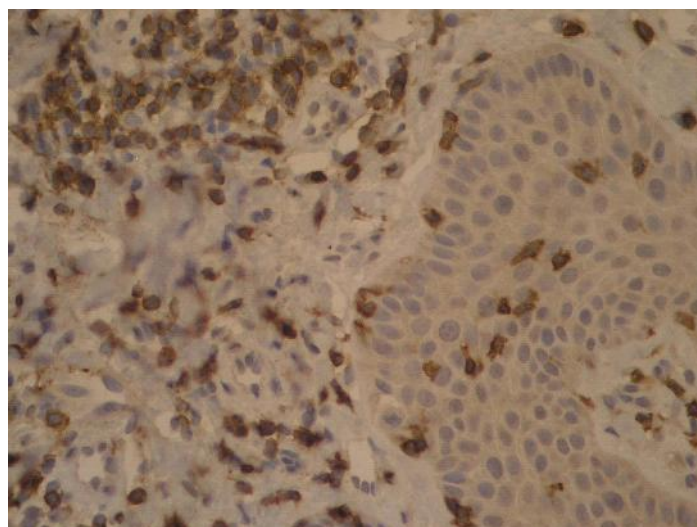
2014, 17, 2 (66) -
 (.1). - 59,31±12,39 - 70,13±13,87 (
 46,13±10,31 , <0,01).

CD8+ (M±m)

	(n=10)		(n=17)		(n=12)		(n=7)	
	1,50± 0,61	1,30± 0,47	46,13± 10,31 */**	11,05± 11,21 */**	59,31± 12,39 */**	26,22± 10,12 */**	70,13± 13,87 */**	45,89± 10,23 */**
	-	13,71± 1,01	5,03± 0,92**	63,52± 7,11 */**	6,56± 9,34**	74,25± 9,62 */**	8,48± 11,27**	89,58± 11,47 */**

: * - (P<0,05); ** - (P<0,01); ** -

CD8+ , ,
 , :
 CD8+
 (13,71±1,01) -
 - 63,52±7,11,
 - 74,25±9,62 - 89,58±11,47 (<0,01)
 (.1).
 [2]. - , (.1).



. 1.
CD8 + ;
FLEX. . 40 .
 (>0,001)

