

504. 001: 504. 064

, 41, . , 79000,

“ ” 1921 .  
1927 . (1943–1947)

” (1988) [6].

[2, 5, 7, 9].

...

50-52 %      10-12 % -      20-22 % -      18-20 % -

(      ).  
45 %  
, 30 % -

[3], 2006 .  
1,3 .  
10,4 .  
43 .  
1 , 2  
0,8 .  
-5,1 / 2 .

1 000-3 000

2006 .      2 692 .      2 096      , 323 .  
, 226      , 25      22

“ ”

;

( ) ,

[4, 8, 11, 13]

		,
		- ,
		,
		,
		( ), -
	,	, , , -
		, , -
	,	
	,	
	,	, - , -
		- ,
	,	( ) -
	,	- ,
		, ,
	,	, ,
	,	, , , - -
	,	, , - , -
		, , -

$$1,6 / ^3 ( - 0,25 / ^3), 11,5 / ^3.$$

1,3 / 3 ( ( ) )

[10]. 25 170 / 3

27 ( )

3 512 ( 2006 ). 25,72 ,

61 532,2 , 39,85 % 01.01.2006 - 7,03 % -

122,5 .

- 55,5, - 67,0 . . 1979-1997 .

( , 110,0 124,6 . ), 1997-2007 .-

( , 124,6 122,5 . ) ( . 1).

( 7,4 ‰ 1990 . 2,2 ‰ 2006 . ), 2005 2006 .

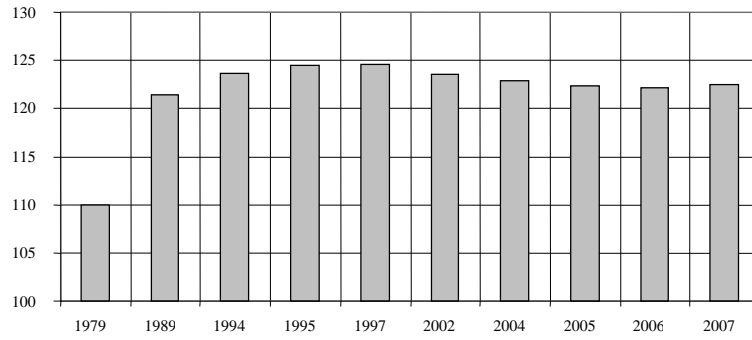
( 1 ‰).

( . 2).

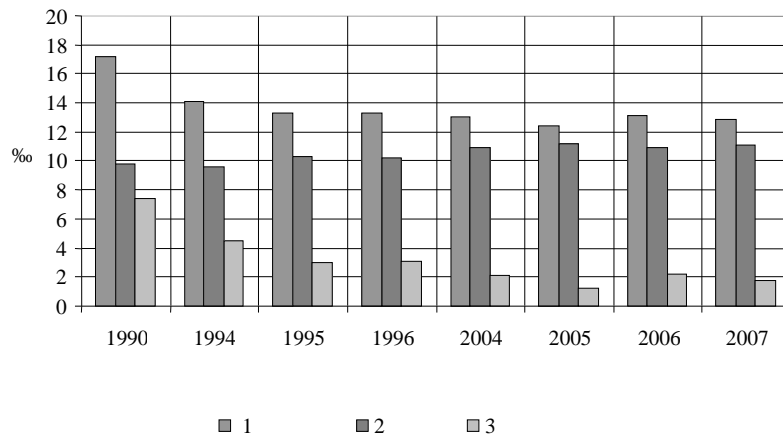
( 5,2 ‰ 2006 . 4,9 ‰ 2007 . ). 1990 .-

10,9 ‰ ( . 3).

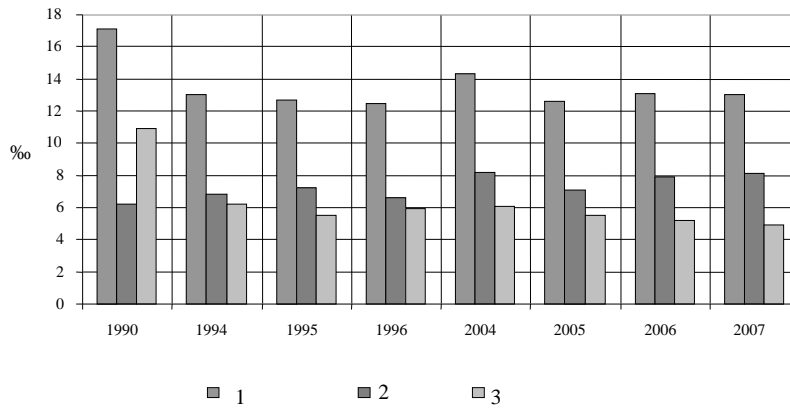
2004 . , 1990 . (- 2,6 ‰ 2007 . ) ( . 4).



. 1. - ( [3, 12]).



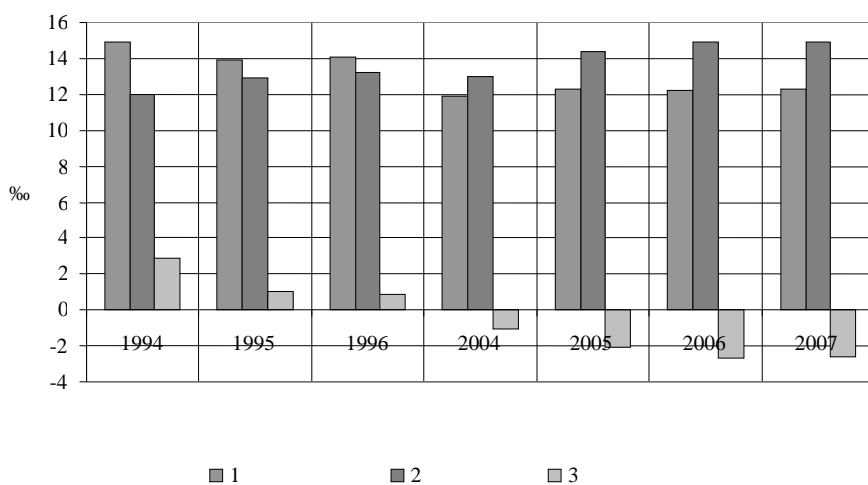
. 2. - ( [3, 12]): 1 - ; 2 - ; 3 -



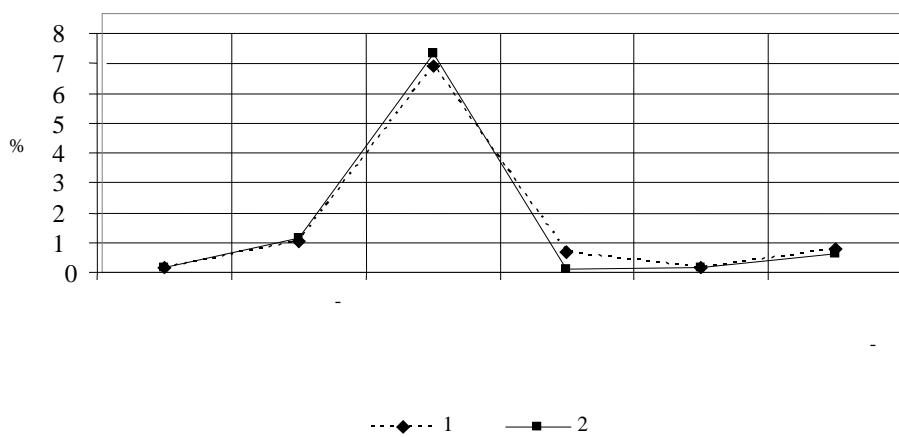
. 3. - ( [3, 12]).

, . 2.

1 116 , 1999 .  
 : 2007 . - 73,49 % , 1999 . - 69,20 % .  
 ( .5).



.4. .2. - ( [3, 12]).

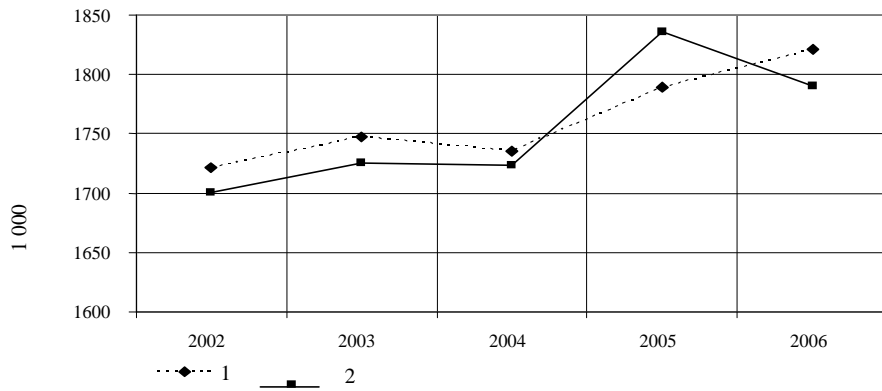


.5. - 1999 (1) 2007 . (2)

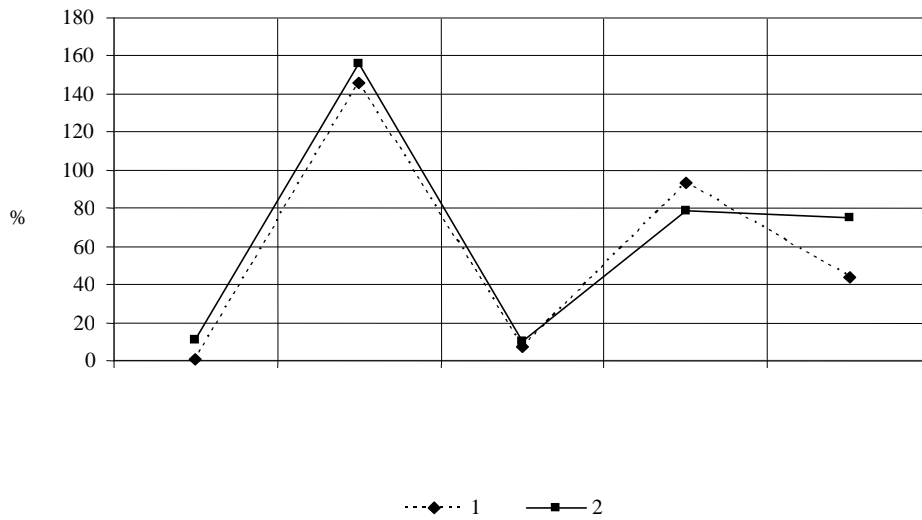
( .6) [1].

( .7).  
2006 .

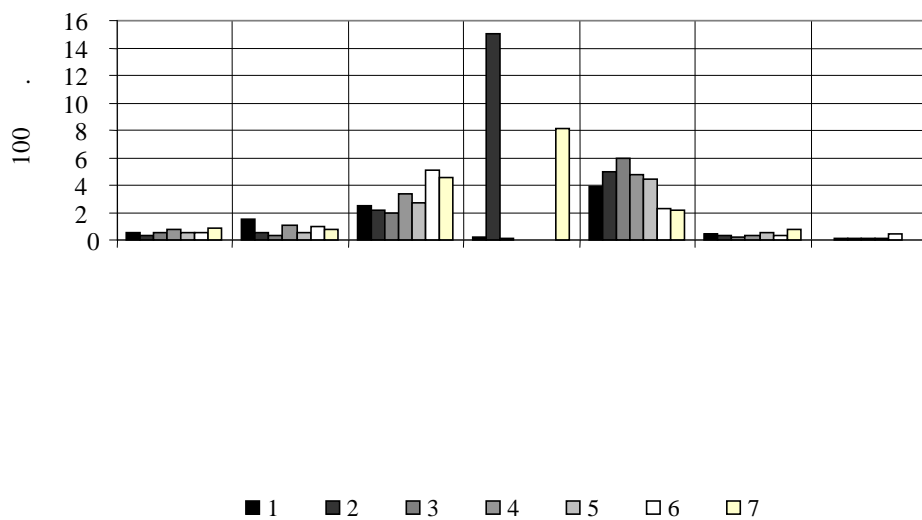
( .8).



. 6.  
14 (1) 7 14 (2).



.7. - 2004 (1) 2005 .(2).



8. ( 100 ). : 1 – 2000; 2 – 2001; 3 – 2002; 4 – 2003; 5 – 2004; 6 – 2005; 7 – 2006.

1. 2002–2006 , 2007. 207 .
2. // . 2: . /
3. , 1996. . 167–168.
4. „ . : , 2003. 192 .
5. „ „ // . 2: . /
6. ; / . : , 1996. . 165–167. // . 2: . /
7. . : , 1996. . 154–155.
8. // . : , 1996. . 161–162.
9. . : , 1981. . 87–91. //



1996. . 163–165.
10. . . . . / . . . . . : . . . . . , . . . . . “ . . . . . ” . . . . . , 1986.
11. . . . . ( . . . . . ). . . . . , 1999. . 49–57.
12. // . . . . . 1 2007 . . . . . , 2007. 42 . . . . . // . . . . .
13. . . . . : . . . . . , 1999. . 140–143.

### EVALUATION OF THE RECENT MEDICAL-DEMOGRAPHICAL STATE OF YAVORIV DISTRICT IN LVIV REGION

**M. Petrovska**

*Ivan Franko National University of Lviv,  
Doroshenko St., 41, UA – 79000 Lviv, Ukraine*

The actual medical-demographical state of Yavoriv district in Lviv region has been analyzed. Namely the dynamics of natality, structure of death causes and types of illness of inhabitants were analyzed. Based on the obtained results the proposals for situation improvement are worked out.

*Key words:* population, natality, death causes, nature increase of population, health, illness.

C

03.05.2009

20.09.2009