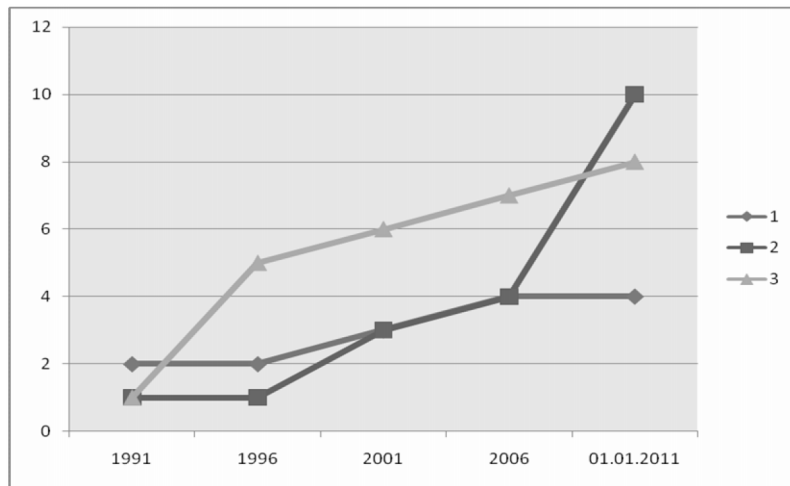


[10, .224].

() -73,3 %
16,4 %
10,3 %
(.1).

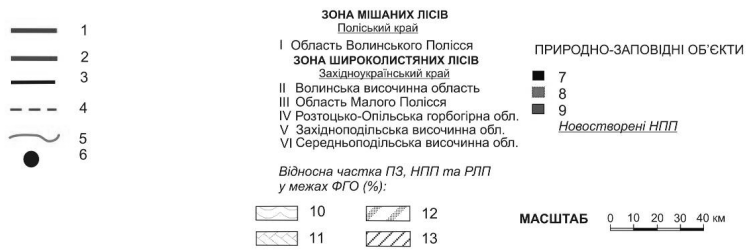
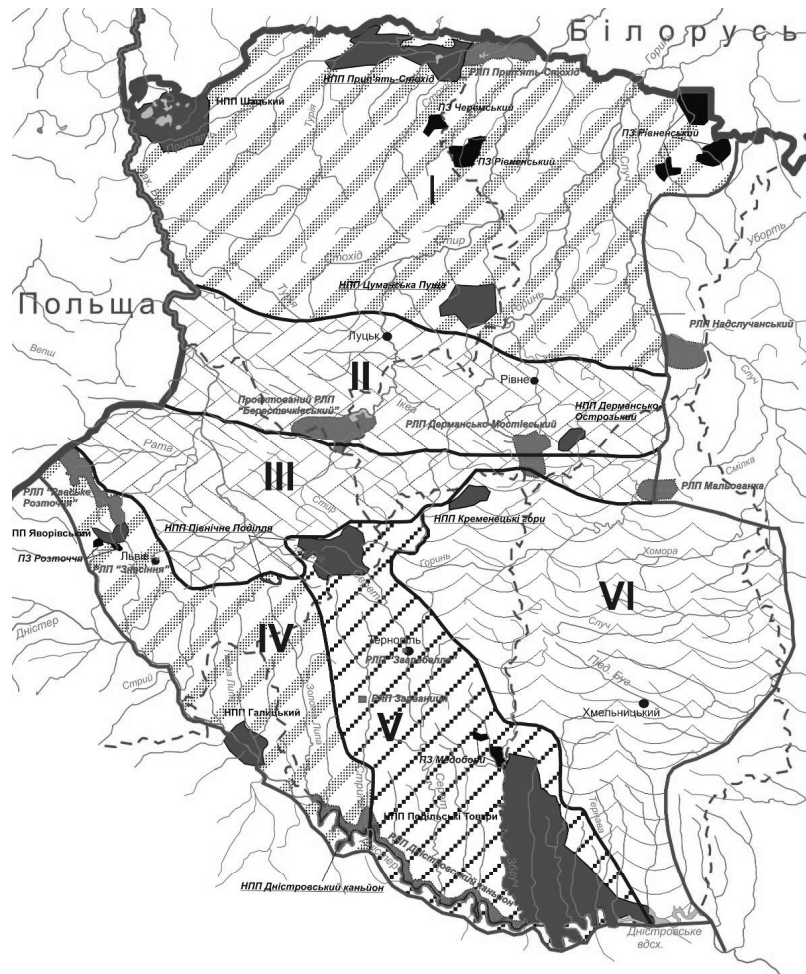


. 1. (1), (2) (3) 1991–2011

() - 0,7 %
- 5,3 % () - 1,2 %
7,2 %
[1].

7 % (.)
(48 977), (33 475,3)
(39 315,5) 4,4 %
(.2). 2007

(47 046,8) (2 975,7)
1,8 % (21 600) 0,8 %



Фізико-географічне районування за Мариничем О.М., Пархоменком Г.О., Пашенком В.М., Петренком О.М., Шиценком П.Г. "Національний атлас України" 2008 р.

. 2. ; 3 - ; 4 - ; 5 - ; 6 - ; 7 - ; 8 - ; 9 - ; 10 - <1 % ; 11 - 1-5 % ; 12 - 5-10 % ; 13 - >10%.

			%		%		%		%
(-)									
	2 775,3	50,023	1,8	121,767	4,4	21,600	0,8	193,39	7
	925,1	-	-	5,448	0,6	10,000	1,2	15,448	1,8
	832,6	-	-	-	-	13,87	1,7	13,87	1,7
-	782,2	2,084	0,3	20,232	2,6	25,275	3,2	47,591	6.1
-	1 278,4	9,516	0,7	279,919	21,9	26,307	2,1	315,742	24,7
-	1 682	-	-	11,296	0,7	2.037	0.1	13,333	0,8
	8 275,6	61,623	0,7	438,662	5,3	99,089	1,2	599,374	7,2

(5 448,3) - (10 000), -
1,8 %
- (7 800) (6 070) -
1,7 %
-
- (2 084,5), -
(7 078,6), (2 829,2), (640)
(9 684,8) 2,6 %
) 3,2 %
(0,7 %), -
(21,9 %).

- [12, .55].
- 7,2 %
- 24,7 % (), -7,
- 6,1 %;
- 1,8, -1,7 %.
- 0,8 %,
-
1. “ 2000–2015 ”. 21 . 2000 . 1989-III []. : <http://www.rada.gov.ua>
 2. “ ” 16 1992 . //
 3. . 2001. . 206–235.
 4. , 2004. 53 .
 5. / . . . [.]. . : , 2001. 60 .
 6. , 2003. 306 .
 7. . 2004. 2 (.2) . 241–246. //
 8. , 2006. 511 .
 9. [.] : <http://www.menr.gov.ua>
 10. , 2004. . 14.8. . 80–88. , 2008. 440 .
 11. // - . 2009. . 1. . 114–117.
 12. (,) / . . . : , 2009. 320 .

**REPRESENTATION ANALYSIS OF LARGE RESERVES UNITS NETWORK
IN WESTERN VOLYN-PODILLIA REGION****V. Khudoba**

*Ivan Franko National University of Lviv,
Doroshenko St., 41, UA – 79000 Lviv, Ukraine*

The article is dedicated to the analysis of the network of reserves, national parks and regional landscape parks in Western Volyn-Podillia region. The research has determined their level of representation of nature-territorial complexes of the region itself. It has been suggested in the article to optimize these objects in order to increase their representation by means of creating more regional landscape parks.

Key words: nature reserves stock, natural reserve, national park, regional landscape park, nature-territorial complexes.

07.07.2010

16.11.2010