

556.18:551.482

. ,
. , 41, , 79000,
. :
XX XXI ,
: ,
80 % , (.).
. (35 %) [3].
[10].
. ,
. [2-4, 7].
(. (1969), (1972), (1972),
. (1976), , (2002),
(2006) .) (2003), ,
(.) (.).
- ,
[5].
- (.)
, , (.)
, ,).

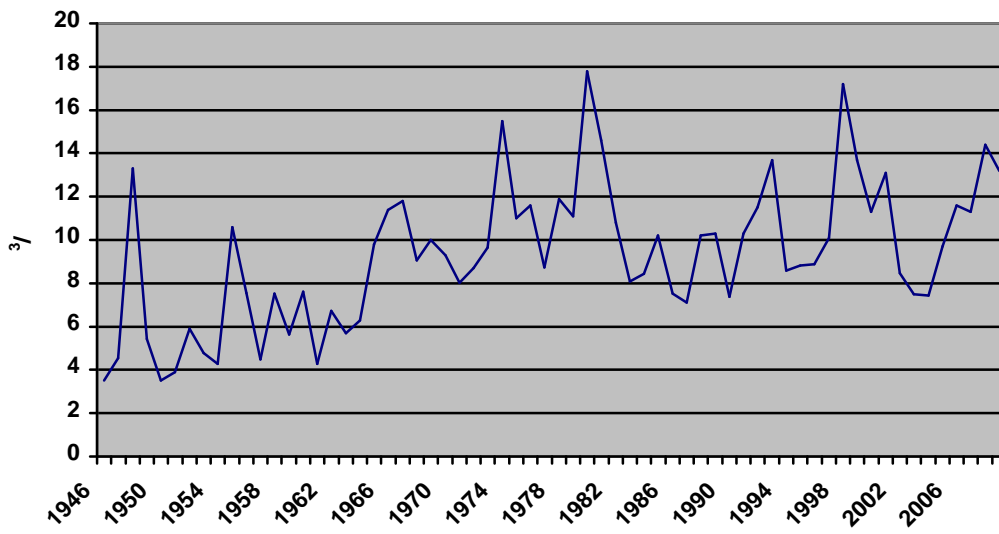
(-1 440 ² , - 60)
 , 55 , 10 () [11].
 -
 -
 250-300 , - 1
 2 / -
 (.)
 [9]. XX . (0,5-2,0 / ²)
 ()
 (. ,)
 0,2-0,3 / , 6-12 , - 5 .
 XIX .
 887 .
 [1].
 (. - .) (. 1).
 1

		1940, 1948	12.08.1970	*
		1887		*
		1910	1928	*

*
 , 7 , 8 -
 - ,
 , 4-6 ,
 220 , - 250-300 , - 300 .
 , 1,5 , , -
 [2].
 1946-2010 .
 -
 , 9 ^{3/} ,
 1980 . - 17,8 ^{3/} , - 1950 . - 3,5 ^{3/} (. 2).

, 3/	9,0	17,8	3,5
, / . 2	6,2	12,4	2,4
, ,	391,0	194,4	77,0
, , 3	0,294	0,563	0,111

1974, 1980 1998.
1946, 1950 1951 . (. 1).

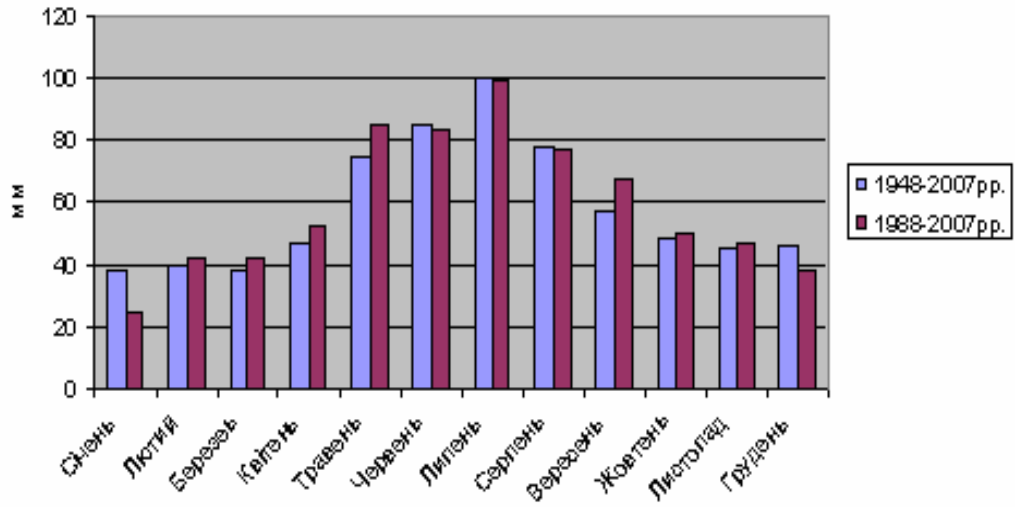


. 1. (.).

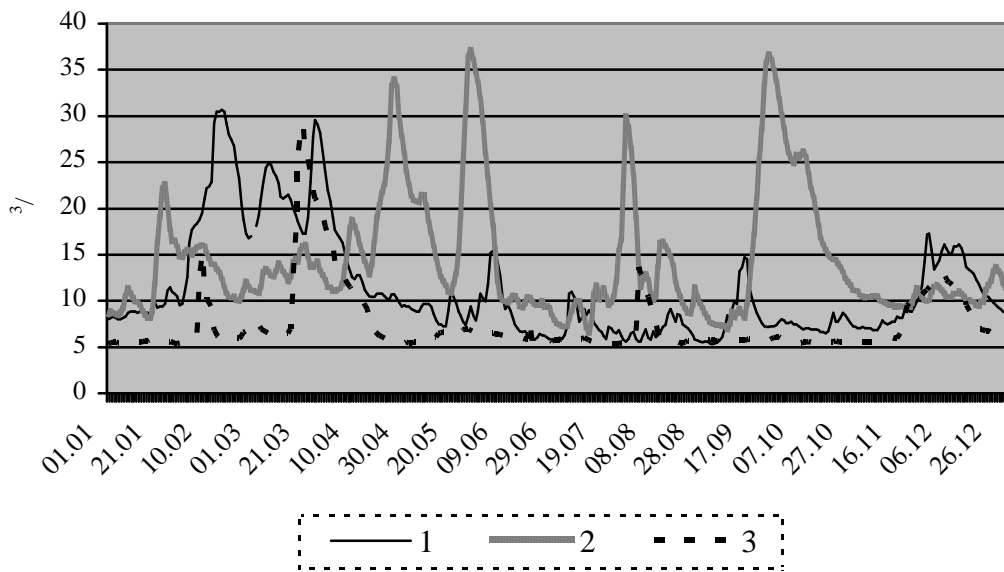
0,75 [8].

(. 2).

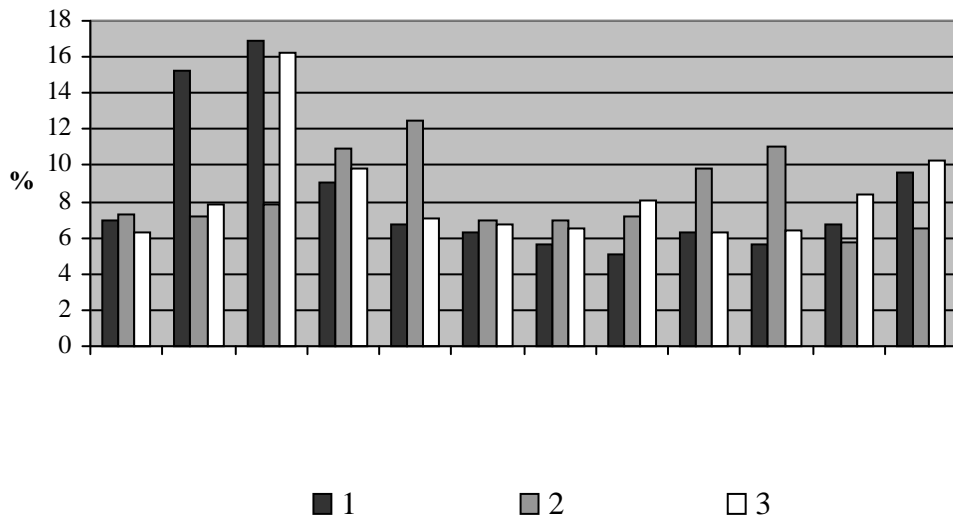
(. 3, 4).



.2. 1948-2007 1988-2007

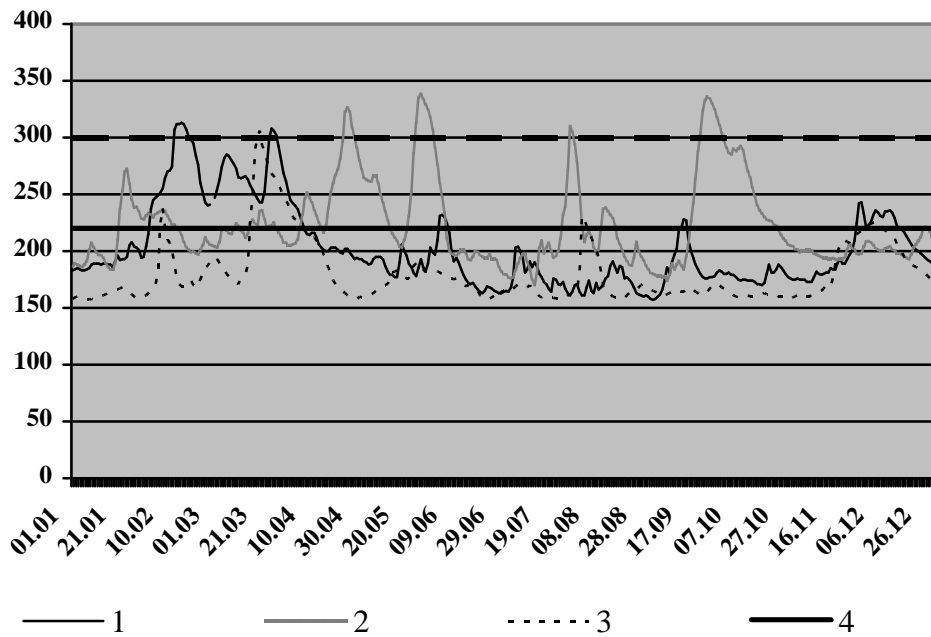


.3. 1 – (2007); 2 – (2008); 3 – (2004).



4. (. . .) : 1 - (2007); 2 - (2008); 3 - (2004).

(. 5).



5. (. . .) : 1 - (2007); 2 - (2008); 3 - (2004); 4 - ; 5 -

1. ... / ... //
... , 1969. - .6, .1. - .118-138.
2. ... : ... / ... -
... [... , ... , ...]. -
: ... , 2009. - 608 .
3. ... /
... , ... , ... - .: - , 2006. - 184 .
4. ... /
... // ... , ... -2002. - .3. - .161-166.
5. ... : / ... , ... , ... -
: ... , 2008. - 399 .
6. ... / ... ,
... , ... - : ... , 2009. - 32 .
7. ... // ... ,
-2003. - .5. - .240-248.
8. ... / ... ,
... , ... // ... , ... -2002. - .4. - .89-100.
9. ... :
... : 11.00.07 / ... ;
... - : 2001. - 22 .
10. ... // ... -
/ ... , ... // ... , 2010. - .124-126.
11. ... //
... - : ... , 2010. -
.111-118.

11.10.2011
20.12.2011

**CONDITIONS OF FORMING AND FACTORS OF WATER REGIME
OF THE POLTVA RIVER**

L. Kurhanevych, M. Shipka

*Ivan Franko National University of Lviv,
Doroshenko St., 41, UA – 79000 Lviv, Ukraine*

The analysis of water regime of the Poltva River system has been carried out. History of hydrological investigations, hydrological regime parameters, trends of the long-term changes of hydrological regime in XX-XXI centuries have been characterized. Natural conditions and man-made factors of the river water regime forming have been analyzed.

Key words: water regime, hydrological post, water discharge, water level.