

910.2:551.4+551.8 (477)

( )

, 41, 79000, ,  
e-mail: prostolena.87@mail.ru

( )

( ).

1920 1939 .

[42, 44–47]



( ) .



, 1912 .

1914 .

[1, 2].

[40, 41].

1914 . .

1927 .

[25, . 32].



... (12.10.1928–09.09.1930) [1, . 120–125; 22].  
 ... : “ ... ?”  
 ( ... 12 ... 1928 ). “ ... -  
 ... ” ( ... 17  
 1928 ). “ \_\_\_\_\_ , \_\_\_\_\_  
 1 1/2 ... )  
 in extenso<sup>1</sup>, ” ( ...  
 31 1929 ). “ [ ] , ?”  
 ( ... 4 ... 1929 ). “  
 ... ” ( ... 9 ... 1930 ).



...  
 1927 . ,  
 [20]. , “ -  
 (1927–1947)  
 : . -  
 ” [49, . 5].  
 1927 . ,  
 , 29 1929 . – ( -  
 ) [39, . 11].  
 6 , 1935 . “  
 ” [39, . 12].

<sup>1</sup> n extenso ( . ) –  
<sup>2</sup> “



(1932).

[64].

[49].

” (1937) “

(1938) [7].

. 27–64].

[29, 30].

[29,



[7].

“ -  
 ”,  
 [19].  
 18 1949 . : “ ! ,  
 , ! ?  
 ,  
 ! ,  
 ,  
 ” [49, . 9].  
 , 8 1950 ::  
 “ !  
 ! “ 85” , “ ” [49, . 9].  
 : “  
 ...” [19, . 83].  
 [46].  
 “ ” [43, . 81],  
 [12,  
 . 2-29; 13, . 105-117].  
 ( , 1934-1939 ); ( (1925-1939),  
 [31-33, 35],  
 , 20- 1929 .  
 “ ” [36]);  
 ( “ ”);  
 ( );  
 ); ( );  
 ( “ ” (1920-1932)) .  
 [11; 50, . 124-235].  
 ; - ,

... [46].

1929 .

... ( ), ( ), ( ).

1933–1937 . (1931–1939, 1937–1939,

)

[57].

...<sup>3</sup> [63],<sup>4</sup> ) [37,

---

<sup>3</sup> : (1936–1937) -

<sup>4</sup> (1945–1951) [61]. - [53].

. 154], ( ), [36, . 3-4; 52].



6 1927 .  
:“  
...  
“ ”)  
( 1920- ) [42].  
1920-1928  
“

[57].

6205),

[42].



4 1924 .(

[5],

1922 .

” [5].

5.

9 1925 .) [42].

9 1925 .: “

( .- . .)

[34].



... “ ”

( 9 1925 ). “ — 2

“ ”)– , . -

... , , ,

... -

( , )... -

... , ,

... ”.

... “

... ” –

“ ” [36, .2].

1926 .. 24

... [42].

“ ” [41]. “

... 1939 .

... ” – [41, .1].

[42].

1928 .. [42].

... “

... ”

20 -

1929 . “ ”.

[36, .1].

“ ”

1930 .,

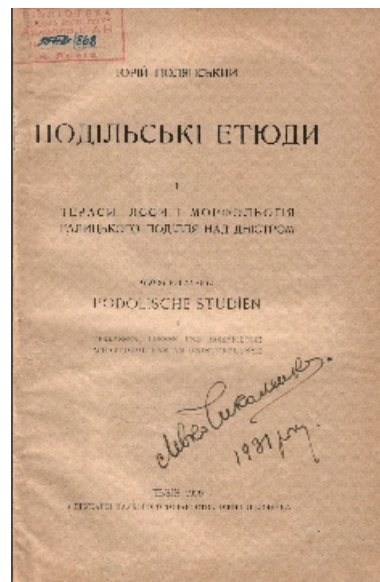
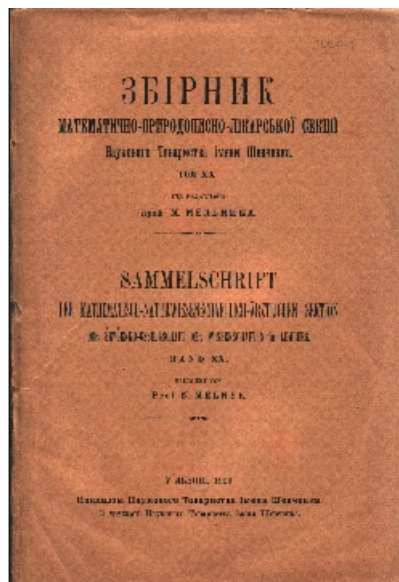
“ [42] ”

28 1929 . : “ “ ” ,

“ ”

316 . . 1930 .

“ ”



“ ”

(1939)

“Paleolit”, (!)

( ) ,

[55].

: “

” [55, . 2].

1939 .

[42].

[38].

“

( . . . ),

?”.

[42].



1920-

1928 .

[42]. “

( . . . ),

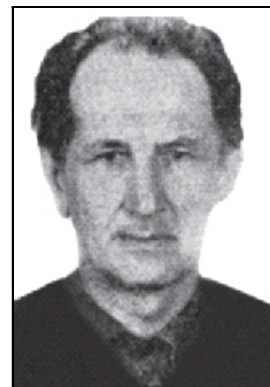
( . . . ),

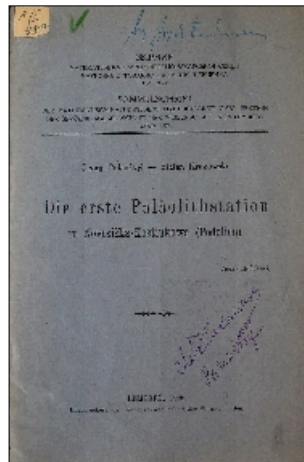
( . . . ) .” [26, .11].

” [27].

( ) ( -

[28].



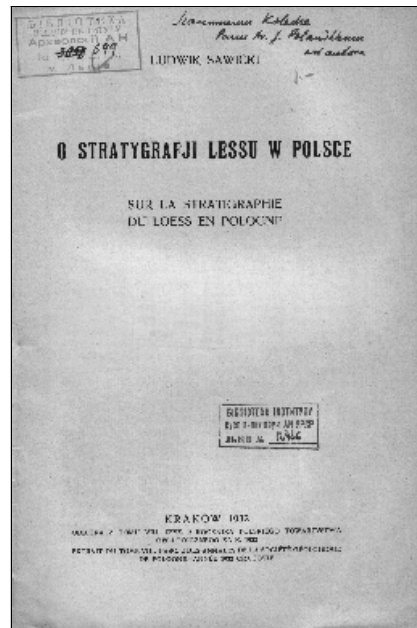
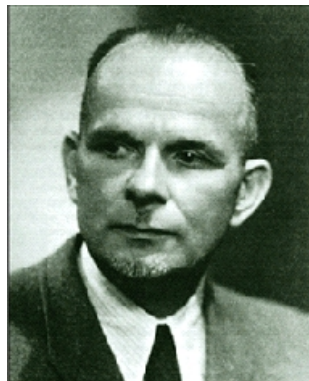


(Towarzystwo Geograficzne we Lwowie),  
1927/1928  
1928 . . . . . 121 . . . . . 1

” (wspieraj cych) [59].

, . . . . . 1927 . (12 )

(“Sprawozdanie z wyników



bada paleolitycznych lessowych w Gródku na Wołyniu”).

[42].

, 17 1927 . . .

“

”;

(

).

[42].

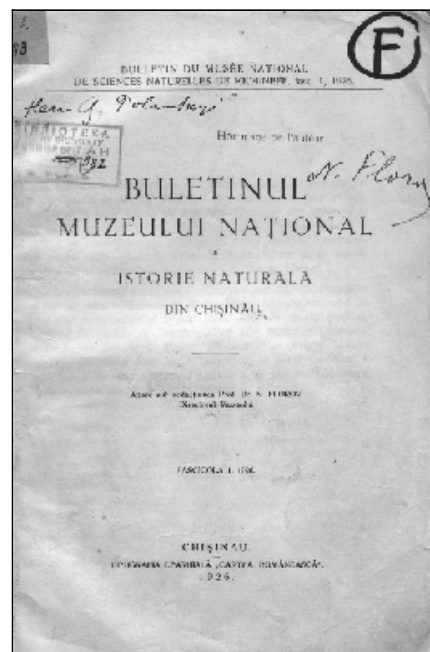
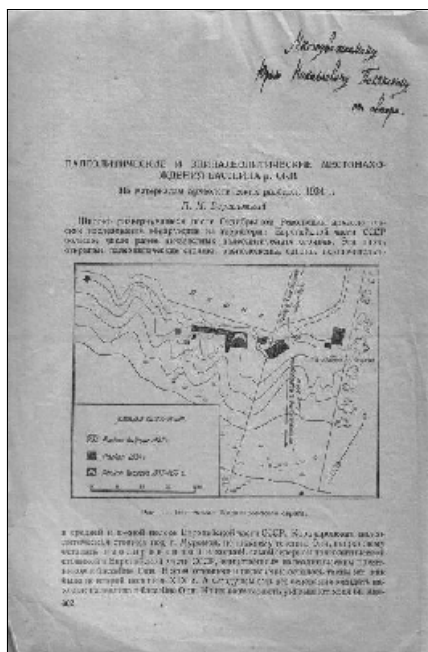
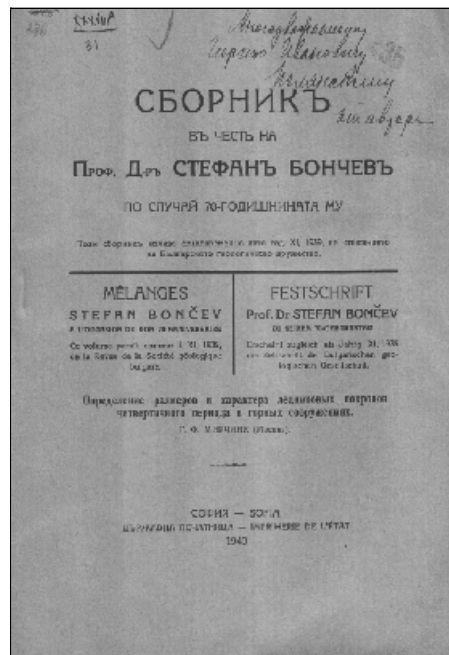
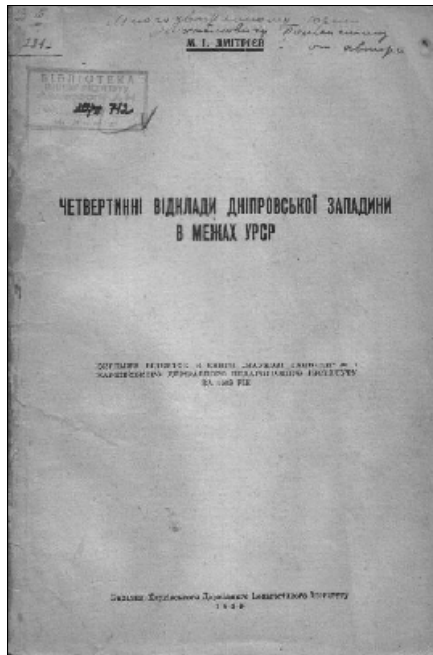
[56].

[58].



1930– 1940-

[8–10];



[23, 24];  
6

[3],

[51]

[14–17; 21, . 442].

[16]



”, 1929)

(“



[32].

. . [14].

6

[4]

[6]

V -6 1927 1929 . [60].

b

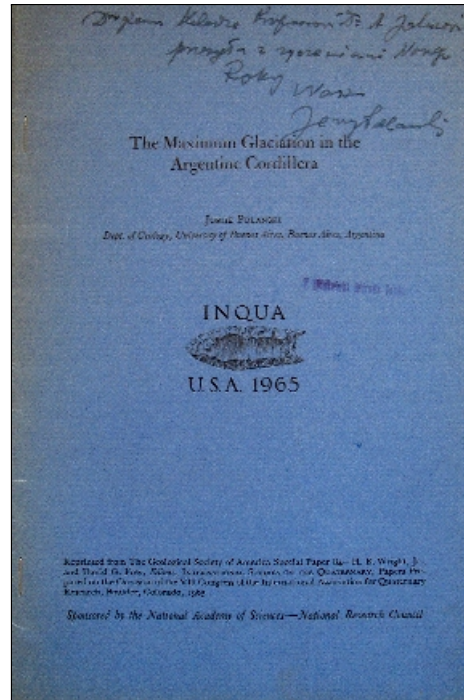
” [6, . 164].

<sup>7</sup> [54].



V -6

b -





1956 .

(Miembro Honorario de la Asociacion Geologica Argentina),  
(Miembro Correspondiente de la Soc. Geol. de Mendoza).

1964 .

“Premio Dr. A. Mibashan en Homenaje del Sesquicentenario de la Revolucion de Mayo”  
[50, .193].



[62].

1964 .” [48, .305].

1. . . . . / [ . . . . . ] . - , 1994. - 136 .
2. . . . . , 2007. - 408 . / [ . . . . . ] . - :
3. . . . . // INQUA. - 1934. - . 1. - . 302-317.
4. . . . . , 1940. - 128 . / . . . . - . . . . :
5. . . . . // . - 1925. - .
6. . . . . V -6 V -6 ( - . - . . . . ) / . . . . - . . . . , 1933. - 226 .
7. . . . . ] . - : . 1: / [ . . . . . ] . - : . . . . - , 1938. - 512 .
8. . . . . / . . . . / “ . . . . ” 1940 [ . . . . . ] . - 1940. - 18. - 7 .
9. . . . . / “ . . . . ” . . . . [ . . . . . ] . - 1939. - 1. - . 229-263.
10. . . . . / “ . . . . ” . . . . 1937 [ . . . . . ] . - 1937. - 10. - 10 .
11. . . . . ] . - ; , 1955-1984. : 10 / [ . . . . . ] . - ; , 1921/22 - 1930/31. 1931/32 // - 1921-1931. - , 1932. - 101 .
13. . . . . ( . . . . ) / . . . . , / . . . . , . . . . // : . . . . , . - 2001. - . 8. - . 105-117.
14. . . . . // . . . . . - 1934. - . 2. - 8. - . 500-506.
15. . . . . / . . . . // . . . . - . . . . . - 1926. - . 4. - . 214-264.
16. . . . . / . . . . // . . . . . - . . . . , 1927. - . 9. - . 5. - . 1-325.
17. . . . . // . . . . - . . . . . - , 1930. - . 1-2. - 10. - . 27-35.

18. . . . . “ ” /
- . . . . . / [ ] /
- . . . . . - 1941. - . 5. - . . 4. - 59 .
19. . . . . / [ . . . . . ] . - -
- : . . . . . , 2000. - . 2. - 1024 .
20. . . . . / . . . . /
- . . . . . ] . - : . . . . . , 2010. - . 339-344.
21. . . . . : . . . . . ) / . . . . . ,
- ( . . . . . , . . . . . - : . . . . . , 2009. - 536 .
22. . . . . ] // / [ . . . . . ; . . . . .
- . . . . . - 2006. - . 19. - 435 .
23. . . . . -
- . . . . . // . . . . . - 1940. - . 33. - 10. - . 1-7.
24. . . . . / . . . . . //
- . . . . . 70- . . . . . : . . . . .
- , 1940. - . 241-246.
25. . . . . /
- . . . . . : . . . . . / [ . . . . . ] . - . . . . . , 1994. -
- . 29-42.
26. . . . . / . . . . . // . . . . . - - 2006. - . 36. - . 11.
27. . . . . ( , . . . . . -
- ) / . . . . . //
- . . . . . , 1976. - . 7-12.
28. . . . . / . . . . . //
- . - . . . . . , 1998. - . 235. - . 636-637.
29. . . . . / . . . . . /
- : . 1: . . . . . [ . . . . . ] . - : . . . . .
- , 1938. - . 27-64.
30. . . . . / . . . . . /
- / [ . . . . . ] [ . . . . . ] . - . . . . . , 1943. - . 33-77.
31. . . . . -
- ( . . . . . )
- . . . . . // . . . . . . - 1925. - . 1. - . 3-24.
32. . . . . / . . . . . //
- . . . . . - 1932. - . 4-5. - . 1-8.
33. . . . . //
- . . . . . . - 1932. - . 4-5. -
- . 1-19.
34. . . . . / . . . . . //
- . - 1925. - . 23-24. - . 1-2.
35. . . . . / . . . . . //
- . . . . . - 1927. - . 2. - . 1-14.

36. . . . : , . . . . – 1929. – . 20. – 191 с.
37. . . . / . . . . // . . . . , . . . . // . . . . : 1784–2009 / . C. . . . , . . . . / [ . . . . , . . . . ]. – : , 2009. – 472 ., 618 . . . . / [ . . . . , . . . . ]. – ; - 38. , 2010. – 540 . . . . ( 80- . . . . ) / . . . . // - 39. . – 2010. – . 44. – . 11–13.
40. . . . // . . . . – 1907. – . 11. – . 1–80.
41. . . . // . . . . – 1913. – . 16. – 311 . . . .
42. . . . / . . . . , . . . . // . . . . – 2010. – . 13. – . 7–52.
43. . . . / . . . . // . . . . / [ . . . . , . . . . ]. – : , 2007. – . 3. – . 81–85.
44. . . . / . . . . // . . . . – 2012. – . 40. – . 2. – . 178–196.
45. . . . / . . . . // . . . . – 2011. – . 39. – . 342–363.
46. . . . / . . . . // . . . . – 2009. – . 13. – . 322–335.
47. . . . – 2010. – . 38. – . 340–356.
48. . . . : . . . . – ; , 1996. – . 298–305.
49. . . . “ ” / . . . . / [ . . . . ]. – : . . . . , 2010. – . 5–11. . . . 100-
50. . . . 1878–1978 . / [ . . . . ], – . . . . ; , 1978. – . . – 611 . . . .
51. *Florov N.* Die Quartarformation in Bessarabien / N. Florov // Buletinul Muzeului National de Istorie Naturala din Chi in u. – Chi in u : Cartea Româneasc , 1926. – Fascicola 1. – S. 109–133.
52. *Graniczny M.* Józef Siemiradzki (1858–1933) – geolog niezwykły / Marek Graniczny, Joanna Kacprzak, Leszek Marks, Halina Urban // Przegląd Geologiczny. – 2008. – . 56. – N 5. – S. 366–372.
53. *Hausbrandt L.* Prof. dr hab. Aniela Kozłowska (1898–1981) / Ludmiła Hausbrandt // Wiadomości Botaniczne. – 1983. – . 1 (27). – S. 3–8.

54. Jahn A. Z Kleparowa w wiat szeroki / A. Jahn. – Wrocław : Zakład Narodowy im. Ossolińskich, 1991. – 332 s.
55. Krukowski S. Paleolit / S. Krukowski // Encyklopedia Polska PAU. Prehistoria ziem polskich. – Kraków, 1939–1948. – T. 4. – Cz. 1. – Dz. 5. – S. 1–117.
56. Polański J. Lessy warstwowe w wietle archeologicznych bada Ludwika Sawickiego / J. Polański // Nadbitka z Wiadomości Archeologicznych. – Warszawa, 1928. – T. 10. – S. 1–12.
57. Polanski G. Die erste Paläolithstation in Nowosilka-Kostiukowa (Podolien) / G. Polanski, S. Krukowski // . . . . . – 1926. – . 25. – 23 . (Separatabdruck).
58. Sawicki L. O stratygrafji lessu w Polsce / L. Sawicki // Rocznik Polskiego Towarzystwa Geologicznego za r. 1932 [odbitka]. – Kraków, 1932. – T. 8. – Z. 2. – S. 331–332.
59. Zierhoffer A. Towarzystwo Geograficzne we Lwowie. Sprawozdanie za rok 1927/28 / . Zierhoffer / [odbitka]. – Lwów, 1928. – 8 s.
60. <http://hydrogeology.univer.kharkov.ua>
61. [http://pl.wikipedia.org/wiki/Stanisław\\_Kulczyński](http://pl.wikipedia.org/wiki/Stanisław_Kulczyński)
62. <http://www.facebook.com/jorge.polanski>
63. <http://www.uni.wroc.pl/o-nas/godności-honorowe/doktorzy-honoris-causa/stanisław-kulczyński>
64. <http://ntsh.org/files/uprava-i-chleny-1932-big.jpg>

: 01.08.2012  
23.11.2012  
05.12.2012

### SCIENTIFIC CONTACTS OF PROFESSOR YURI POLIANSKI (based on epistolary heritage)

**Olena Tomeniuk**

*Ivan Franko National University of Lviv,  
P. Doroshenko St., 41, UA – 79000 Lviv, Ukraine,  
e-mail: prostolena.87@mail.ru*

Scientific cooperation of Ukrainian palaeogeographer, geomorphologist and archaeologist Yu. Polianski with scientists from related fields of natural sciences and humanities under materials of private correspondence was investigated. On the basis of the identified prints of publications with dedicatory signatures of Yu. Polianski for his colleagues and vice versa (for him) the range of scientific contacts of this researcher was widened. It is an addition to the understanding of the role and place of the scientist and the range of his interests in scientific community of that time.

*Key words:* scientific contacts, scientist, palaeogeography, geomorphology, geology, archaeology, Ukraine.

( )

, 41, 79000, ,  
e-mail: [prostolena.87@mail.ru](mailto:prostolena.87@mail.ru)

,  
.  
.  
.  
:  
.