

582.232/275-193

. . . - , . . . ,  
. . .  
- . . . ,  
01001 , , 2,

**DESMIDIALES**

( )

*Desmidiáles* ( , , )

132 *Desmidiáles*,

17 .

26 ( . . . *Cosmarium*

*constrictum* Delp., *C. cf. dorsitruncatum* (Nordst.) West, *C. infirmum* Grönbl., *Euastrum pectinatum* Bréb. ex Ralfs *Staurastrum neglectum* W. et G.S. West ).

: *Desmidiáles*,

( , 1949; , 1953, 1954; , 1956, 1959;  
, 1957; , 1994; , 1997).

( - , , 1993),

*Desmidiáles* ,

14 .

2006 . ( , , ) ,  
4 %-  
(20 , 40 , 90 ).

( - , 1984, 1986);

Canon Carl Zeiss Jena NU 2.

© . . . - , . . . , . . . , 2009

( , , 1983; , 1994).  
 \_\_\_\_\_ (25,2 %) 7 , - 58,5 ,  
 ( - , 1975).  
*Schoenoplectus lacustris* (L.) Palla *Phragmites australis* (Cav.) Trin. ex Steud.  
 \_\_\_\_\_ (6,8 %) 1 , - 6,7 , 95 ,  
 ( *Drosera anglica* Huds. *D. intermedia* Hayne).  
 \_\_\_\_\_ (1,8 %) - 7 ,  
 - 16 .  
*S. lacustris*.  
 (1983 .)  
 1974 . ( , 1986).

132  
 (Closteriaceae Desmidiaceae)  
 17 ( ). 26 , . .  
*Cosmarium constrictum*, *C. cf. dorsitruncatum*, *C. infirmum*, *Euastrum pectinatum*  
*Staurastrum neglectum* ( .  
 , 7). *Cosmarium* (65 ),  
 49,2 % ,  
 : *Closterium* – 13 (9,8 %)  
*Staurastrum* – 11 (8,3 %).  
 (1-6).  
*Euastrum* (5 ) *Cosmoastrum*, *Micrasterias* *Pleurotaenium*  
 ( 4 ).  
 : *Spondylosium* (4 ), *Sphaeroszoma* (4 ), *Hyalotheca* (1 ),  
*Teilingia* (1 ), *Cosmocladium* –

*C. tumidum*.

( - , , 1993).  
Desmidiales

( - , 1982).

( . . 1), *Cosmarium*, *Staurastrum*

*Closterium*.

## Desmidiales

	1993	2006	1993	2006	1993	2006
<i>Closteriaceae</i>						
<i>Closterium</i> Nitzsch. ex Ralfs	2	13	-	4	5	5
<i>Desmidiaceae</i>						
<i>Actinotaenium</i> (Näg.) Teil.	1	2	-	1	3	1
<i>Cosmarium</i> Corda.	33	31	7	40	34	34
<i>Cosmoastrum</i> Pal.-Mordv.	3	1	-	3	-	4
<i>Cosmocladium</i> Bréb.	-	-	-	-	1	1
<i>Euastrum</i> Ehr. ex Ralfs	1	3	-	3	5	1
<i>Hyalotheca</i> Ehr. ex Ralfs	-	1	-	-	-	-
<i>Micrasterias</i> Ag.	-	4	-	-	-	1
<i>Pleurotaenium</i> Näg.	-	3	-	-	2	1
<i>Raphidiastrum</i> Pal.-Mordv.	2	4	-	2	1	1
<i>Sphaerozosma</i> Corda ex Ralfs.	-	2	-	-	1	2
<i>Spondylosium</i> (Bréb.) Kütz.	2	-	-	3	-	3
<i>Staurastrum</i> Meyen ex Ralfs	11	5	-	6	9	4
<i>Stauroidesmus</i> Teil.	-	3	4	-	6	1
<i>Teilingia</i> Bourr.	-	-	-	-	2	1
<i>Tetmemorus</i> Ralfs.	-	2	-	-	-	-
<i>Xanthidium</i> Ehr. ex Ralfs	2	1	-	-	1	2
	57	75	11	62	69	60

67 %

Desmidiales,

( - , , 1993).

Desmidiales

( . )

*Cosmarium*. , . 40

64,5 % Desmidiales

33 (55 %), . – 31 (41 %).  
*Cosmarium* 9, 6,9 %.  
*Closterium* (13 ),  
 – : . – 4 , . – 5.

\_\_\_\_\_ , 62 *Desmidiales*,  
 8  
*Cosmocladium*, *Hyalotheca*, *Micrasterias*,  
*Raphidiastrum*, *Stauroidesmus*, *Teilingia*, *Tetmemorus*, *Xanthidium* *Sphaerososma*.  
*Cosmarium* (40 ).  
*Staurastrum* – 6 (9,6 %),  
 , *Closterium* – 4 (6,4 %).  
*Cosmarium* – (64,5 %)  
 – 80,5 %,

*Desmidiales*, 1993 . 2006 . 1993 .  
 11 *Desmidiales*: 7 *Cosmarium* 4 *Stauroidesmus*.

*Desmidiales*, *Cosmarium*.  
 \_\_\_\_\_ *Desmidiales*,  
 76  
 12 , *Cosmarium* (31 , 41 %), *Closterium* (13  
 , 17,3 %) *Staurastrum* (6 , 6,6 %)  
 (69,9 %).

: *Cosmarium circulare*, *C. minimum*, *C. moniliforme*, *C. quinarium*, *C. subholmiense*,  
*C. subquadrans*, *C. thwaitesii* var. *penioides* ,  
 : *Cosmarium constrictum*, *C. dorsitruncatum*, *C. infirmum*  
*Actinotaenium tesellatum*,

.. « »  
 , , *Sphaerososma vertebratum*, *Micrasterias pinnatifida*,  
*M. apiculata*, *Cosmarium* cf. *dorsitruncatum* ( . , 1, 5, 6, 7),  
 , *Pleurotaenium coronatum*,  
*Actinotaenium turgidum*, *Cosmarium dentiferum* ( . , 2, 3, 8),

\_\_\_\_\_ , 60 *Desmidiales*,  
*Desmidiales* 15 ,  
 : *Cosmarium* – 33  
 (55 %), *Closterium* – 5 (8,3 %) *Staurastrum* – 4 (6,6 %),  
 – 69,9 %,

*Cosmocladium tumidum*,  
Desmidiaceae

( - , 1993),  
*Cosmarium* (63  
1993 . - 65 2006 .),  
1993 . ( , *Cosmarium*  
*abbreviatum*, *C. helcangulare*, *C. praemorsum*, *C. protuberans* .),  
2006 . 18 *Cosmarium* 8

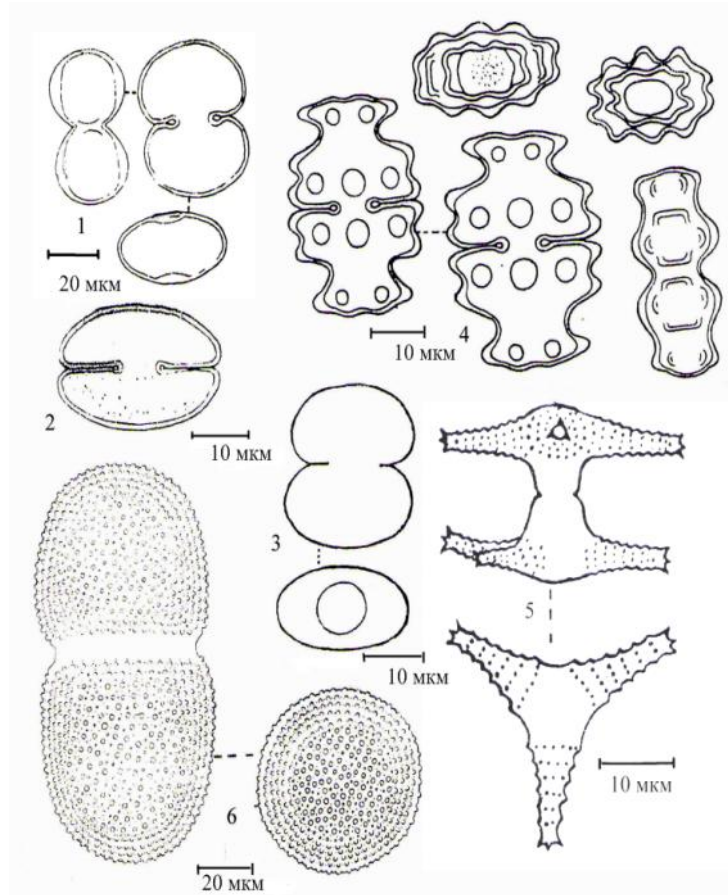
, 5  
*Cosmarium constrictum* ( . , 1), (J.B. Delponte, 1878)

( , ),  
, (

*Cosmarium infirmum*, ( ), *Euastrum pectinatum*,  
,  
( - , 2003,  
2005).

*Actinotaenium tesellatum* (= *Cosmarium*  
*tesellatum* (Delp.) Nordst.)  
( . 6, , 4).

(Delponte, 1878),  
( ),  
, (Irene-Marie 1948, 1949; Messikommer, 1951).



*Desmidiales,*

: 1 – *Cosmarium constrictum*; 2 – *C. cf. dorsitruncatum*; 3 – *C. infirmum*; 4 – *Euastrum pectinatum*; 5 – *Staurastrum neglectum*; 6 – *Actinotaenium tesellatum*

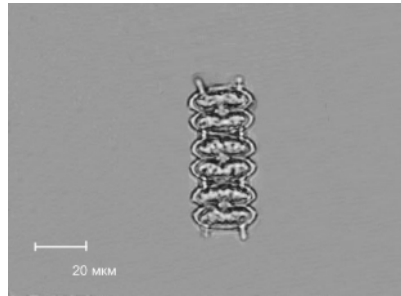
*Cosmocladium tumidum,*

*Spondylosium ellipticum,*

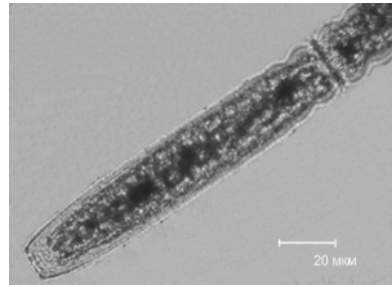
(1993 .)

*Desmidiales*

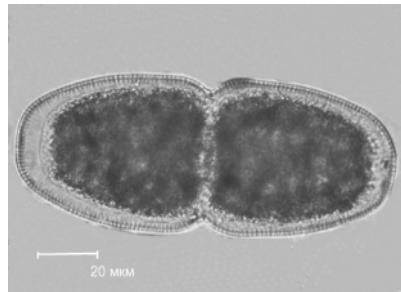
( - , 1993).



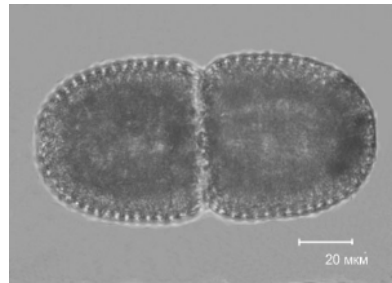
1



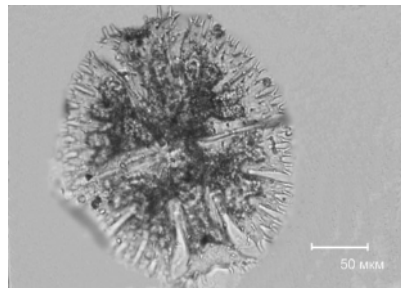
2



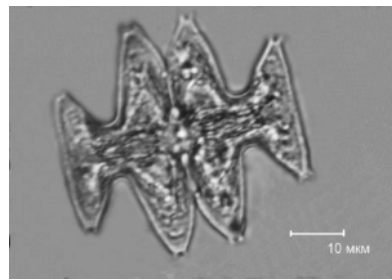
3



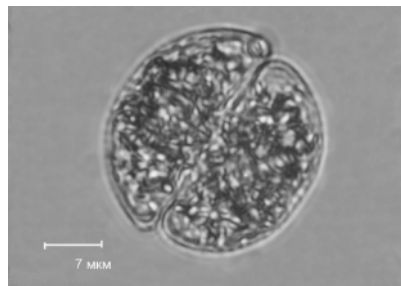
4



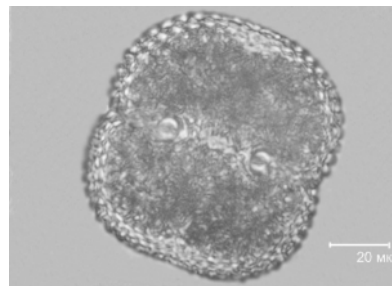
5



6



7



8

Desmidiales,

1 – *Sphaeroszoma vertebratum*; 2 – *Pleurotaenium coronatum*; 3 – *Actinotaenium turgidum*; 4 – *A. tesellatum*; 5 – *Micrasterias apiculata*; 6 – *M. pinnatifida*; 7 – *Cosmarium* cf. *dorsitruncatum*; 8 – *C. dentiferum*

( , , ) 132  
 17 .  
*Desmidiales*  
*Desmidiales*  
 : *Cosmarium*, *Closterium*  
*Staurastrum*.  
*Desmidiales*, 1993 .  
 ( , . ).

G.M. Palamar-Mordvintseva, I.P. Shindanovina, E.P. B lous

<sup>1</sup>N.G. Kholodny Institute of Botany, National Academy of Sciences of Ukraine,  
 2, Tereshchenkovskaya St., 01601 Kiev, Ukraine

SPECIES AND TAXONOMIC DIVERSITY OF *DESMIDIALES* FROM SHATSKY  
 NATIONAL NATURAL PARK (UKRAINIAN POLISSYA)

The results of investigation on *Desmidiales* in 3 lakes (Svytiaz, Luky, Pesochnoe) from Shatsky National Natural Park are presented. 132 species on *Desmidiales* which belong to 2 families and 17 genera are discovered. For the first time for this region are indicated 26 species from them, including *Cosmarium constrictum* Delp., *C. cf. dorsitruncatum* (Nordst.) West, *C. infirmum* Grönbl., *Euastrum pectinatum* Bréb. ex Ralfs *Staurastrum neglectum* W. et G.S. West which are new for Ukraine.

*Key words* : *Desmidiales*, Shatsky National Natural Park, Ukraine.

.. - . -  
 : . , 1983. – 216 .  
 .. ..  
 // : . 1983-1993 . - ,  
 1994. – .52-79.



## Cyanophyta

- ( ) // . - 1997. - **3**, 3. - . 289-297.  
 // . . . . - 1957. -  
**7**, 3. - . 128-133.  
 // . . . . - 1956. - **13**, 2. -  
 . 89-98.  
 // . . . . -  
 1959. - **16**, 4. - . 91-101.  
 . . . . . 8 (1). -  
 . . . . , 1984. - 511 .  
 . . . . . *Desmidiaceae*  
 ( ) // . - 1993. - **3**, 2. - . 66-73.  
 // . . . . - 1954. - **11**,  
 4. - . 51-57.  
 . . . . . : . . . .  
 ... . . . . - , 1953. - 10 .  
 . . . . . - 1982. -  
 238 .  
 . . . . . 8(2). -  
 . . . . , 1986. - 318 .  
 . . . . . 1 - . : -  
 . . . . , 2003. - 353 .  
 . . . . . 2 - . : -  
 . . . . , 2005. - 572 .  
 - . . . . // . . . . : - . . . . , 1975. -  
 . 59-74.  
 . . . . . : . . . . ,  
 1986. - 48 .  
 . . . . .  
 // . . . . . 1983-1993 . -  
 , 1994. - . 163-170.  
 . . . . . // . . . . .  
 . . . . . - 1949. - **6**. - . 133-151.

*Delponte J.B.* Specimen Desmidiacearum Subalpinarum // Mem. Deele Reale Acad. Sci. (Torino). - 1878. - **11**, N 30. - P. 1-186.

*Irene-Marie Fr.* Contribution a la connaissance des Desmidiées de la region des Trois Rivières Ve partie // Nat. Canad. - 1948. - **75**, N 2; 1949. - **76**, N 3/4. - P. 66-88.

*Messicommer E.* Grundalgen zu einer Algenflora des Kantons Glarus // Mitt. Natur. Ges. Kant. Glarus. - 1951. - **8**. - P. 72-87.

31.03.08