

581.526.323(477.75)

...

-
- , 2, 99010

О

« » ()

« » 47

() -

1998 .
2000, 2001 - , 2002).

2005 2007 .
(, 1969). 0,2-0,3 -
(10 , 40),
(14), 20
(2005 2007 .) 12 (2007 .)
.. (2002).

© .. , .. , 2010

Rhodophyta,
, 1989;

..., 2000;

Chlorophyta, Phaeophyta
(, 1967; -
, 2003).

,
,
(- , 1975).

K_j (%)
R (%) (, 1961; , 1964; - , 1967;
, 1989).

2005 2007 .

-
47 (.).

Chlorophyta 16 , Phaeophyta - 3, Rhodophyta - 23
Magnoliophyta - 5 .

« » (R)

	-		-		-		-		R, %	
	1	2	1	2	2	1	2	1	2	
1	2	3	4	5	6	7	8	9	10	
<i>Chlorophyta</i>										
<i>Cladophora vadorum</i> (Aresch.) Kütz.		+	+	+			+	67	75	
<i>C. siwashensis</i> K.I. Mey.		+		+			+		75	
<i>C. laetevirens</i> (Dillw n) Kütz.	+	+			+			33	50	
<i>C. albida</i> (Nees) Kütz.	+		+			+		100		
<i>Enteromorpha torta</i> (Mert.) Reinb.		+	+	+	+		+	33	100	
<i>E. maeotica</i> Proschk.- Lavr.	+	+		+		+	+	67	75	
<i>E. intestinalis</i> (L.) Nees	+	+	+					67	25	
<i>E. prolifera</i> (O. Müll.) J. Agardh	+	+						33	25	
<i>E. flexuosa</i> (Wulfen) J. Agardh	+	+						33	25	
<i>E. linza</i> (L.) J. Agardh	+	+						33	25	

1	2	3	4	5	6	7	8	9	10
<i>Chaetomorpha aërea</i> (Dillwyn) Kütz.		+	+	+		+		67	50
<i>C. linum</i> (O. M. Il.) Kütz.	+			+				33	25
<i>Rhizoclonium tortuosum</i> (Dillwyn) Kütz.			+	+			+	33	50
<i>Ulothrix implexa</i> (Kütz.) Kütz.		+	+	+	+		+	33	100
<i>Entocladia viridis</i> Reinke				+					25
<i>Vaucheria dichotoma</i> (L.) C. Agardh				+		+		33	25
<i>Rhodophyta</i>									
<i>Chondria dasyphylla</i> (Wood.) C. Agardh		+	+	+	+		+	33	100
<i>C. capillaris</i> (Huds.) M.J. Wynne	+	+	+	+	+	+		100	75
<i>Polysiphonia opaca</i> (C. Agardh) Moris et De Not.				+					
<i>P. denudata</i> (Dillwyn) Grev. ex Harv.	+			+	+	+		67	50
<i>P. elongata</i> (Huds.) Spreng.				+					25
<i>P. subulifera</i> (C. Agardh) Harv.	+			+	+			33	50
<i>P. sanguinea</i> (C. Agardh) Zanardini		+							25
<i>P. brodiei</i> (Dillwyn) Spreng.		+							25
<i>Ceramium diaphanum</i> (Lightf.) Roth	+	+	+	+		+	+	100	75
<i>C. rubrum auctorum</i> (J. Agardh) J. Agardh	+	+	+	+		+		100	50
<i>Laurencia obtusa</i> (Huds.) J.V. Lamour.		+	+	+		+		67	50
<i>Kylinia virgatula</i> (Harv.) Papenf.				+					25
<i>Fosliella farinosa</i> Lamour. (Howe)				+		+		33	25
<i>Callithamnion corymbosum</i> (Sm.) Lyngb.	+	+	+	+	+			67	75
<i>Dasya hutchinsiae</i> Harv.			+	+	+	+	+	67	75
<i>Eupogodon apiculatus</i> (C. Agardh) P.C. Silva					+				25
<i>Phyllophora nervosa</i> (DC.) Grev.		+	+	+	+	+		67	75
<i>Erythrotrichia carnea</i> (Dillwyn) J. Agardh		+	+	+				33	50
<i>E. reflexa</i> (H. Crouan) Thur.				+					25
<i>Pneophyllum confervicola</i> (Kütz.) Y.M. Chamb.		+		+					50
<i>Spermothamnion strictum</i> (C. Agardh) Ardiss.				+					25
<i>Acrochaetium savianum</i> (Menegh.) Nageli				+					25
<i>Goniotrichum elegans</i> (Chauv.) Zanardini				+					25

1	2	3	4	5	6	7	8	9	10
<i>Phaeophyta</i>									
<i>Eudesme virescens</i> (Carmich. ex Berk.) J. Agardh				+					25
<i>Dilophus fasciola</i> (Roth) Howe				+					25
<i>Punctaria latifolia</i> Grev.							+		25
<i>Magnoliophyta</i>									
<i>Zostera marina</i> L.			+	+	+	+	+	67	75
<i>Z. noltii</i> Hornem.			+	+	+	+	+	67	75
<i>Potamogeton pectinatus</i> L.			+	+		+		67	25
<i>Zannichellia majoris</i> L.				+					25
<i>Ruppia cirrhosa</i> (Petagna) Grande			+					33	

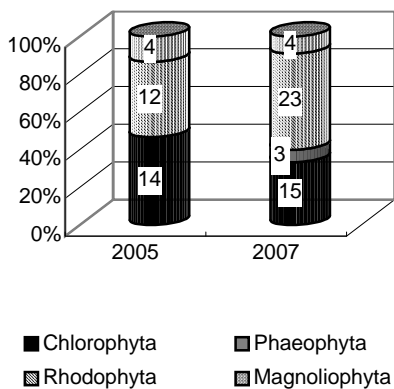
. 1 – 2005 ., 2 – 2007 .

Chlorophyta, Rhodophyta Phaeophyta

29, 21 4 % -

1,5-2

Phaeophyta.



. 1.

» 2005 2007 . (. 2, 3 .)

«

(18 %

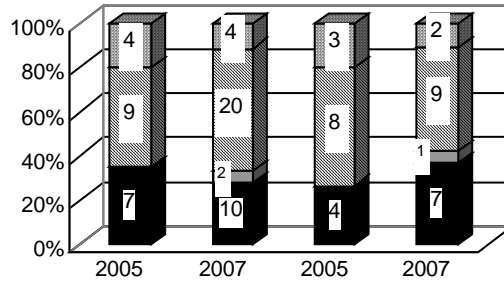
30 %

. 43

26 , 17 15 .
 , 71 % -
 (,
 2003). 2005 . 2007 .
 ()
 2005 . 30
 , 4 - .
 (. .1).
 8 . 15 , 10 -
Cladophora Kütz. - *Enteromorpha* Link.
 2007 .
 ,
 1,5 , *Rhodophyta* - 2 .
 . -
Polysiphonia Grev. (6). *Phaeophyta*.
 ,
 (j)
 50 % 81 % .
 100 %- *Chlorophyta*,
 (80 %) (86 %) .
Rhodophyta
 (67 75 %),
Chlorophyta.
Magnoliophyta 60 %.
 , 1998 .
 (, 2002), .
 (j= 70 %),
 - (j= 18 %).
Phaeophyta.
 «
 »
 , . . (2002).
 (. 2).

13

. *Rhodophyta* , *Chlorophyta* *Phaeophyta* -
(. . 2).
(*Eudesme virescens*, *Dilophus fasciola*)
2007 .
2 , - 1,5 , - 2 .
(. . 2).



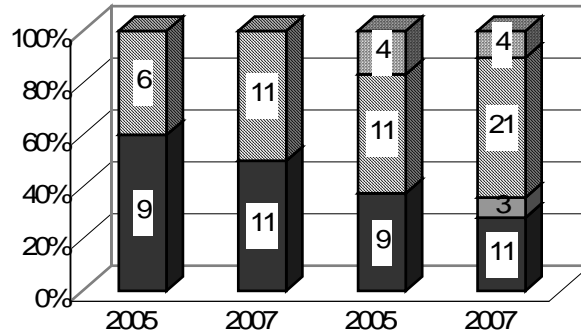
. 2.

(1,5-2)
(23 12 , 10 3 8).
Rhodophyta , ,
(12 , 9 , 5 3). *Chlorophyta*
(*Punctaria latifolia*).
1,3-1,9 ,

. . . , . . .

 , , ,
 , , ,
 . *Magnoliophyta*
 .
 j.
Chlorophyta, 13 %, *Rhodophyta* (j = 27 %).
 .
 - (2007 .)
 , (1,3 -1,6)
 , (6)
 (3 2
). - *Phaeophyta*,
Chlorophyta
 1,5 . *Rhodophyta*
 .
 Kj – 20 % 33 %
 , -
 , -
 .
 , 26 , 12 ,
 8 7 *Chlorophyta* *Rhodophyta*.
 (4 , 5 , 8).
Enteromorpha, Cladophora, Polysiphonia. 1-2
 (.).
Chlorophyta (9), - *Chlorophyta* *Rhodophyta*.
 (j = 41 %).
 (j = 67 %).
 .

(. . 3).
 (24 , 15 , 12 , 3).



. 3.
 « »

– *Rhodophyta*,
 (*Enteromorpha*, *Cladophora*, *Polysiphonia*),
Chlorophyta.
 50 %.
 . 60 %
 (*R* = 100 %). 2007 .
 . 2005 .
 33 100 %.
 (13 % 2005).
Cladophora albida, *Ceramium diaphanum*, *C. rubrum*
auctorum, *Chondria capillaris*. 40 %
 67 %.
 2005 .
Chlorophyta *Rhodophyta*
R (33-100 %), *R*
 (61 %).

. . . , . . .

 ,
 2007 . R
 25 100 %.
 R, 2005 .,
(Ulothrix implexa, Enteromorpha torta. ,
 ,
 .
 2007 . *Magnoliophyta,*
Chlorophyta Rhodophyta .
 , -
 R .
 ,
 R , 2005 .,
 , .
 ,
 2005 . 2007 . , , -
 , -
 ,
 .
 ,
 .
 , *Chlorophyta* -
 , ,
 .
Rhodophyta .
 , ,
 .
 , ,
 .
 , , , , ,
 .

2007 .
(

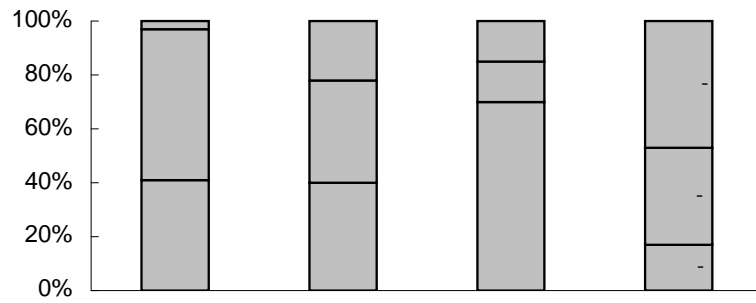
2005 .

1,3-3

(%)

2007 .

(.4).



.4.

“ ”

(, 2002).

70 %

25

1998 .

(48 %),
(55 %) – ()
()

– 2,5

2007 .

2-3

(%)

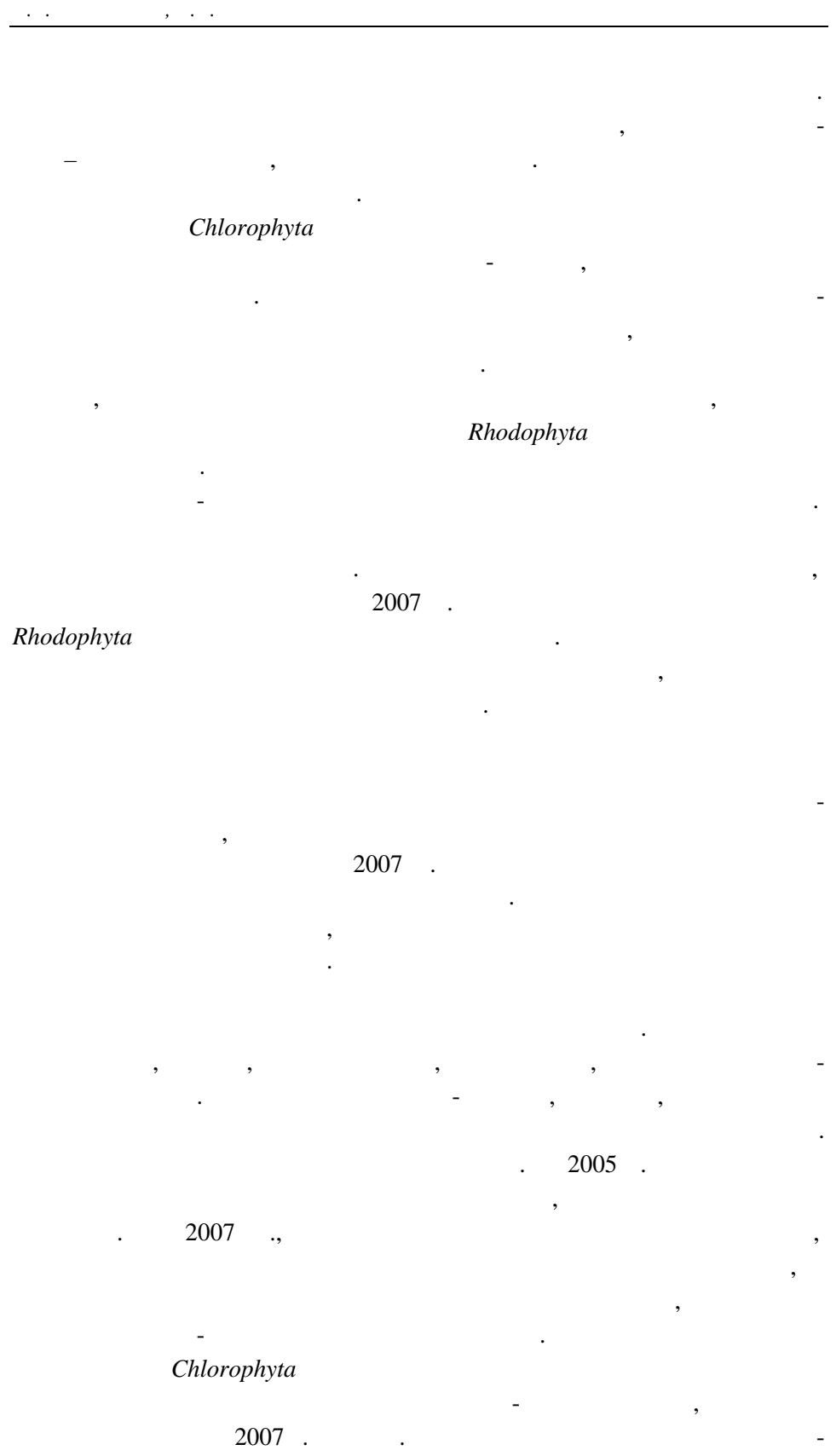
Chlorophyta

Chlorophyta *Rhodophyta*

Phaeophyta

Chlorophyta

Chlorophyta, Rhodophyta



Chlorophyta,

2007 . *Chlorophyta* ,

» 47 *Chlorophyta, Rhodophyta, Phaeophyta*

Rhodophyta. ,

29, 21 4 % ,

2005 . 1,5-2 *Chlorophyta Rhodophyta.*

Cladophora Enteromorpha. 2007 .

1,5 2 – *Rhodophyta.*

Chlorophyta

Polysiphonia, *Phaeophyta.*

, 2007 . -

34 , - 5.

Rhodophyta. 2007 .

Rhodophyta, *Chlorophyta.*

I.K. Evstigneeva, I.N. Tankovskaya

A.O. Kovalevsky Institute of Biology of the Southern Seas of National Academy
of Sciences of Ukraine,
2, Nakhimov Ave., 99010 Sevastopol, Ukraine

MACROPHYTOBENTHOS AND MACROPHYTOPERIPHYTHON OF RESERVE
«SWAN ISLANDS» (BLACK SEA, UKRAINE)

The results of a two-year study on summer vegetation in the «Swan Islands» Reserve are presented. In the littoral area of the Karkinit Bay and in two of its estuaries, 47 species of macrophytes belonging to three divisions of algae and to *Magnoliophyta* were revealed. Peculiarities of taxonomic and ecological structure of benthic algalocenoses inhabiting firm substrates are analyzed according to the type of water body and year of observation.

Keywords: macrophytobenthos, fouling, ecological-taxonomic structure, inter-annual dynamics, bay, estuary, preserve.

... / ... , ... , -
: ... , 1989. - 608 .
- - : ... , 1967. - 358 .
... , - ;
: ... , 1967. - 397 .
...
// - , 1969. - . 105-113.
- ... : ... , 1975. - 248 .
... //
(...). - : ... - ,
2003. - . 152-191.
... ..
- : ... , 1989. - 223 .
/ ... , ... // -
2000. - **10**, 4. - 309 .
... (...) //
: ... I
(... , 18 2000 .). - : ... , 2000. - . 37-39.
...
(...) // - 2001 . - **11**, 3. - . 342-359.
... " (...)
) // - 2001 . - **120**. - . 131-139.

... " "

() // - 2001. -
14, 3. - .153-155.

... " "

()// -2002. -**8,** .1. - .39-48.
. - .: - ,1964. -447 .
. , . - ; : ,
1961. -474 .

02.06.08