

УДК 57.085

IMPACT OF A TOBACCO SMOKE ON A METABOLISM OF AN ORGAN CULTURE OF BOVINE LENSES AND POTENTIAL PROTECTION BY ANTIOXIDANTS

Bormusov E., Reznick A.Z.

Rappaport Faculty of Medicine, Technion – Israel Institute of Technology, Haifa, Israel.

Purpose: Smoke from cigarette smoking (CS) has been proposed to be a major environmental risk factor for a variety of human diseases and was implicated also in cataract, an eye lens pacification, which is a major cause of blindness. We have undertaken a study to investigate the effect of smoke on the physiological integrity and metabolism of organ cultured lenses. Lenses in organ culture are metabolically active and have functional defense systems, thus they provide an appropriate model for studying the effects of smoke. Also possible protective action of N-acetyl-L-cysteine (NAC) which is a precursor of glutathione and the iron chelator Deferoxamine (DFO), was estimated as potential protective agents against cataract.

Methods: Bovine lenses were incubated in organ culture conditions at 35°C for 6 days. Treated lenses were 4 day in the culturally environment daily sated with a cigarette smoke under various doses of pressure-250,500 psi. Two of the experimental groups were treated with NAC(1mM) and DFO (2.5ug/ml) as antioxidants. An automated scanning laser system was used for daily testing of both treated and control lenses. At the end of the culture period, lenses were analyzed by inverted microscopy. We have used preparations of the forward monolayer epithelium bovine lenses from all experiments. For this purpose the capsule opened and crystalline lens fibers were cleaned. On the object-plate them there was only a capsule and a cellular monolayer epithelium. Changes of morphology of cells and the contents of the nucleic acids was estimated using the Einarson — DNA-RNA staining method. Reactive Oxygen Species (ROS) were estimated with 5-(and 6-)chloromethyl-2',7'-dichlorodihydrofluorescein diacetate, acetyl ester (CM-H2DCFDA, C6827) to measure the level of cellular oxidation in the cells of lens epithelium. The levels of ROS were measured by monitoring the fluorescent intensity relative to that of control cultures under fluorescent microscopy. Nucleic acids were stained with Propidium Iodide.

Results: Exposure of cigarette smoke in cultured medium under negative pressure, optical quality of lenses and the structural changes were demonstrated by decreased light transmission, increase in focal length variability and a decrease in morphological integrity such as hyperplasia and hypertrophy of epithelial cells. The group exposed to NAC and to DFO, demonstrated reduced optical changes representing smaller lens injury. The lenses show almost no volume changes. However, the baseline fluorescence of controls varied between experiments. A dose-dependent increase in ROS generation in cultures was also evident.

Conclusions: We have shown that increasing the amount CS exposure, for a relatively short time, causes a sharp increase in the damage to the lens. Smoking is an independent risk factor that has dose-response effects. It causes morphological and functional changes to the lens. Based on the independent effects of NAC and DFO, we propose to possibly use them as means of prevention and/or treatment of cataract in heavily smoking people.

Introduction

Cigarette smoking (CS) has been implicated in the pathogenesis of cataract, but the pathogenic mechanism by which cigarette smoke causes cataract is yet to be elucidated. Whether there is a distinct direct dose-dependent correlation between cigarette smoke exposure and risk is debatable, as some experimental clinical studies have shown a non-linear relation to cigarette smoke exposure. Experimental and clinical data support the hypothesis that cigarette smoke exposure increases oxidative stress as a potential mechanism for initiating cardiovascular dysfunction (Ambrose JA, Barua RS., 2004). The effects of CS on immunity are far-reaching and complex; both pro-inflammatory and suppressive effects may be induced. The net effect of CS on immunity depends on many variables, including the dose and type of tobacco, the route and chronicity of exposure, and the presence of other factors at the time of immune cell stimulation, such as Toll receptor ligands or other inflammatory mediators. CS impairs innate defenses against pathogens, modulates antigen presentation, and promotes autoimmunity. CS also impairs immunity in the oral cavity and promotes gingival and periodontal disease and oral cancer. The recognition of specific mechanisms by which CS affects host immunity is an important step toward elucidating mechanisms of tobacco-induced disease and may identify novel therapeutic approaches for the management of diseases that afflict smokers (Lee J, Taneja V, Vassallo R., 2012). There has been suggestion that oxidative damage caused by accumulation of Fenton reagents (iron and copper) in the lens can cause lens damage and possibly cataract (Avunduk AM, Yardimci S, Avunduk MC, Kurnaz L, Kozkar MC., 1997). The lenses of experimental animals (Wistar rats) showed significantly decreased zinc and increased iron, and calcium concentration relative to those of sham exposed controls. However, no significant difference was found in the copper contents of the lenses. Distinct histopatho-

logical changes such as hyperplasia of epithelial cells and elevations of calcium concentration detected in the lenses of experimental group animals suggested that the lens damage was a result of in-vivo exposure to tobacco smoke. The authors propose that increased metal contents in the lens can cause lens damage by the mechanism of oxidative stress through formation of oxygen radicals via metal catalyses Fenton reaction. Cataract and age-related macular degeneration (AMD) are the major causes of vision impairment and blindness worldwide (Fletcher AE., 2010). Both conditions are strongly age related with earlier signs (usually asymptomatic) occurring in middle age and becoming more severe and more prevalent with increasing age. The a etiology of these conditions is thought to fit with the 'free radical theory' of ageing which postulates that ageing and age-related diseases result from the accumulation of cellular damage from reactive oxygen species (ROS). Mitochondrial energy production is a major source of endogenous ROS. External sources of ROS include environmental sources especially solar radiation, biomass fuels and tobacco smoking. There is strong evidence from epidemiological studies that smoking is a risk factor for both cataract and AMD. There is moderate evidence for an association with sunlight and cataract but weak evidence for sunlight and AMD. The few studies that have investigated this suggest an adverse effect of biomass fuels on cataract risk. The antioxidant defence system of the lens and retina include antioxidants vitamins C and E and the carotenoids lutein and zinc, and there is mixed evidence on their associations with cataract and AMD from epidemiological studies. (Weiner D, Khankin EV, Levy Y, Aizenbud D, Reznick AZ., 2010) study was to elucidate the effect of cigarette smoke (CS) on nitrotyrosine formation in saliva proteins. They exposed saliva to CS, in vitro, and used Western Blotting (WB) and monoclonal anti-nitrotyrosine antibody to assess the level of saliva protein nitration. As saliva contains

extensive amounts of nitrites, it was no surprise that at basal levels, saliva proteins, albumin, and alpha-amylase all were already nitrated. The WB also revealed that with continuous exposure to CS the tyrosine nitration of both albumin and α-amylase is declining significantly after 3 h. A quite similar effect was seen after exposure to aldehydes, but to a less extent as compared to CS. Exposure of nitrotyrosine-modified bovine serum albumin (BSA-N) to aldehydes, produced a similar effect, meaning a decrease in tyrosine nitration. Therefore, it is possible that the main player in the CS smoke denitration effect on salivary proteins is the aldehyde group and not the double bond of unsaturated aldehydes, masking the nitro group and thus not recognized by the antinierotyrosine antibodies.

Exposure of human plasma *in vitro* to gas-phase cigarette smoke (CS) causes a marked modification of plasma proteins as measured by protein carbonyl assay (Nagler R, Lischinsky S, Diamond E, Drigues N, Klein I, Reznick AZ, 2000). Aldehydes present in CS may cause this elevation of protein carbonyls by reacting with sulfhydryl groups of proteins. Addition of 1 mM of GSH and N-acetylcysteine considerably protected LDH and amylase activities, suggesting that sulfhydryl groups are affected in LDH and amylase. On the other hand, addition of 1 mM ascorbate caused a further loss of LDH and amylase activities, which could be partially prevented by the addition of desferrioxamine mesylate, implicating metal-catalyzed oxidation processes increased by the addition of ascorbate.

Khanna AK, Xu J, Mehra MR., (2011) demonstrated that chronic tobacco smoke exposure leading up to acute MI in rats is associated with greater histological extent of myocardial necrosis and consequent worse LV function. These findings are associated with increased transcriptomic expression of pro-inflammatory cytokines, tissue repair molecules and markers of oxidative stress in the myocardium. The results demonstrated that an N-acetyl cysteine

(NAC) treatment significantly reduced tobacco-exposed induced infarct size and percent fractional shortening. Decreased intracardiac mRNA expression of the markers of inflammation, tissue repair and oxidative stress and circulating levels of pro-inflammatory cytokines accompanied these positive effects of NAC.

The ocular lens is a unique tissue with a distinctive cellular architecture. The lens consists of two cell types, the single layer of lens epithelial cells on its anterior surface, which are responsible for the growth and development of the entire lens, and the differentiated lens fiber cells, with elongated morphology that do not turn over their proteins throughout life. Lens epithelial cells provide metabolic support to the entire lens, and are also the first cells in the lens to be exposed to damage. Moreover, the epithelium is the site at which metabolic enzymes and transport systems are concentrated, thus making these cells essential for maintaining lens homeostasis, and as the first line of defense against environmental damage. In the present investigation we explored the interactions of cigarette smoke with lens constituents in an attempt to characterize some potential mechanisms by which cigarette smoke interacts with antioxidants and how this may contribute. Desferrioxamine (Desferal®, DFO) is a selective high affinity iron chelator, rendering iron as a stable ferric complex (Avunduk AM, Yardimci S, Avunduk MC, Kurnaz L, 1999). DFO has been often used as a means of reducing tissue oxidative stress and injury. Reddan et al. demonstrated that DFO protects cultured rabbit lens epithelial cell from oxidative insult. (Reddan J, Sevilla M, Giblin F, Padgaonkar V, Dziedzic D, Leverenz V., 1992) showed the effectiveness of DFO in preventing cataractous changes in rat lenses following *in vivo* exposure of rats to oxidative stress.

We have used an additional alternative strategy for curbing ROS-induced injury and protection of the lens. This involved the employment of N-acetyl cysteine (NAC), to scavenge free radicals (Atkuri KR,



Fig.1. Lens extraction from a bovine eye.

Mantovani JJ, Herzenberg LA, Herzenberg LA., 2007) and to replenish reduced sulfhydryl residues. NAC is a precursor of glutathione – the major source of cellular sulfhydryl groups and acts as a potent anti-inflammatory agent. The aim of our study was to determine the relative effectiveness of various antioxidants in ameliorating the adverse effects of cigarette smoke on the lens and epithelium cells.

Materials and Methodology

Lenses and Organ Culture System

Eyes were obtained from 1-year-old male calves at an abattoir. Lenses were dissected within 2-4 hours after enucleating under sterile conditions (Fig. 1). Each lens was placed in a glass and silicon rubber chamber containing 24 ml culture medium (M199 with Earl's balanced salt solution, supplemented with 5.96 g/l HEPES, 3 % dialyzed fetal calf serum and the antibiotics penicillin 100 U/ml and streptomycin 0.1 mg/ml). The glass chamber was filled with sufficient culture medium to completely immerse the lenses (Fig. 2).

The lenses were incubated at 35°C. Culture medium was changed daily. Experimental treatments began after pre-incubation of 24 hours (Dovrat A, Weinreb O., 1995, 1999). Bovine lenses were incubated in organ culture conditions for 6 days. Treated lenses were exposed to CS every day for 4 days at various doses for amount of smoke of pressure-250, 500 mmHg (equivalent to 1-5 cigarettes) in a special device. To two of the experimental as exposed groups we have added NAC(1mM) and DFO (2.5ng/ml) as antioxidants. Exposure to CS was performed by a system consisting of a chamber attached to a vacuum pump and a negative pressure gauge

(up to 600 mmHg) at one end and a cigarette at the other end (Fig. 3). Medium were placed inside the chamber. Then, the vacuum pump was activated, valve B was closed and

valve A was opened until a desired level of negative pressure was created inside the chamber. By using the vacuum pump the pressure inside the chamber was reduced relatively to the atmospheric pressure outside. Subsequently, a TIME commercial cigarette containing 14 mg of tar and 0.9 mg of nicotine and filter (Dubek Ltd., Tel Aviv, Israel) was lit, valve A was closed and valve B between the burning cigarette and chamber was opened for 10 seconds allowing CS to enter the chamber. Creating reduced pressure inside the chamber allowed the drawing of CS from the burning cigarette into the chamber. Thus, the dose of CS entering the chamber equated the level of negative pressure created inside the chamber. Smoke passing through the cigarette

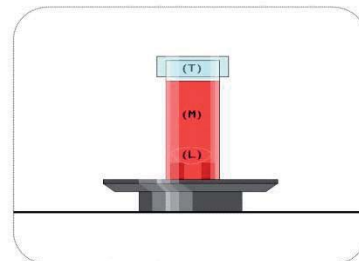


Fig. 2. CS exposure apparatus (Rom et. al., 2013, with permission).

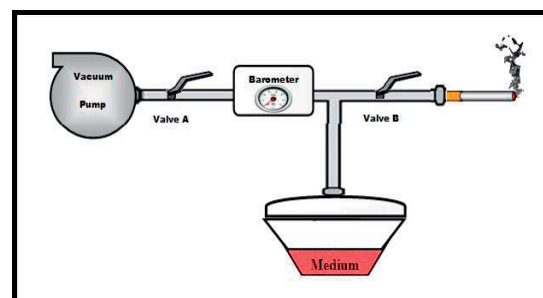


Fig. 3. Lens container -a special test-tube



Fig. 4. Opened a capsules of a lenses

filter was considered as vapor phase CS. After exposure to CS the chamber with the medium was sealed and transferred for different incubation times at 35°C. (Rom O. et al., 2013)

Optical Monitoring System

An optical bench (Dovrat A, Sivak JG, 2005) was used for daily testing of both exposed and control lenses. A 670 nm diode laser with the beam parallel to the axis of the lens was directed towards the cultured lens along one meridian in 0.5 mm increments. After passing through the lens, the laser beam is refracted and the system determines the back vertex focal length for every beam position. Each scan consists of measurements of the same beam from 22 different points across the lens. This optical monitoring apparatus uses a computer-operated scanning laser beam, a video-camera system and a video frame analyzer to record the focal length and transmittance of the cultured lens. The scanner is designed to measure the focal length at points across the diameter of the lens. The lens container permits the lens to be exposed to a vertical laser beam from below. The laser source projects its light onto a plain

mirror, which is mounted at 45° on a carriage assembly. The mirror reflects the laser beam directly up through the test lens. The mirror carriage is connected

to a positioning motor, which moves the laser beam across the lens. The camera sees the cross section of the beams and, by examining the image at each position of the mirror, Scan-Tox software is able to measure the quality of the lens by calculating the back vertex distance for each beam position. A lens of good optical quality is able to focus the laser beam from the various locations at a fairly sharp focal point (Sivak JG, Yoshimura M, Weerheim J, Dovrat A., 1990). When the lens is damaged, it fails to intersect these laser beams at a consistent focal point. Measurements of variability of focal length are a quantitative measure of lens damage.

Lens Epithelium Microscopy and Histochemistry

At the end of the culture period, lenses were analyzed by inverted microscopy. Lenses were photographed using an inverted microscope in order to assess damage at different depths of the lens. For the subsequent studies we have used epithelium preparations of a monolayer of bull lenses from all experiments. Faddeev's method (1962) was used. For this purpose the used capsule was opened were cleaned and transparent fibers of a lens.

On an object plate here was only a capsule and monolayer cellular epithelium (Fig. 4). This was evaluated account the different grade of its capsule, i.e. topographical features of central intermediate and equatorial zone epithelium cells (Bormusova E., 1979).

Treated lenses were analyzed morphologically and by assessment of the nucleic

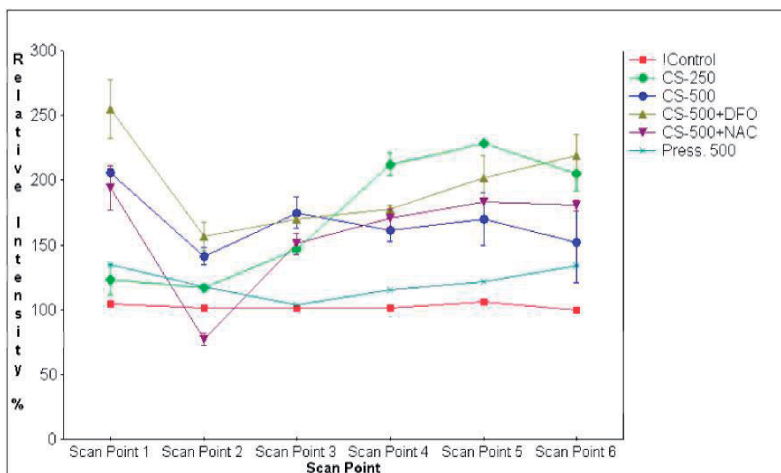
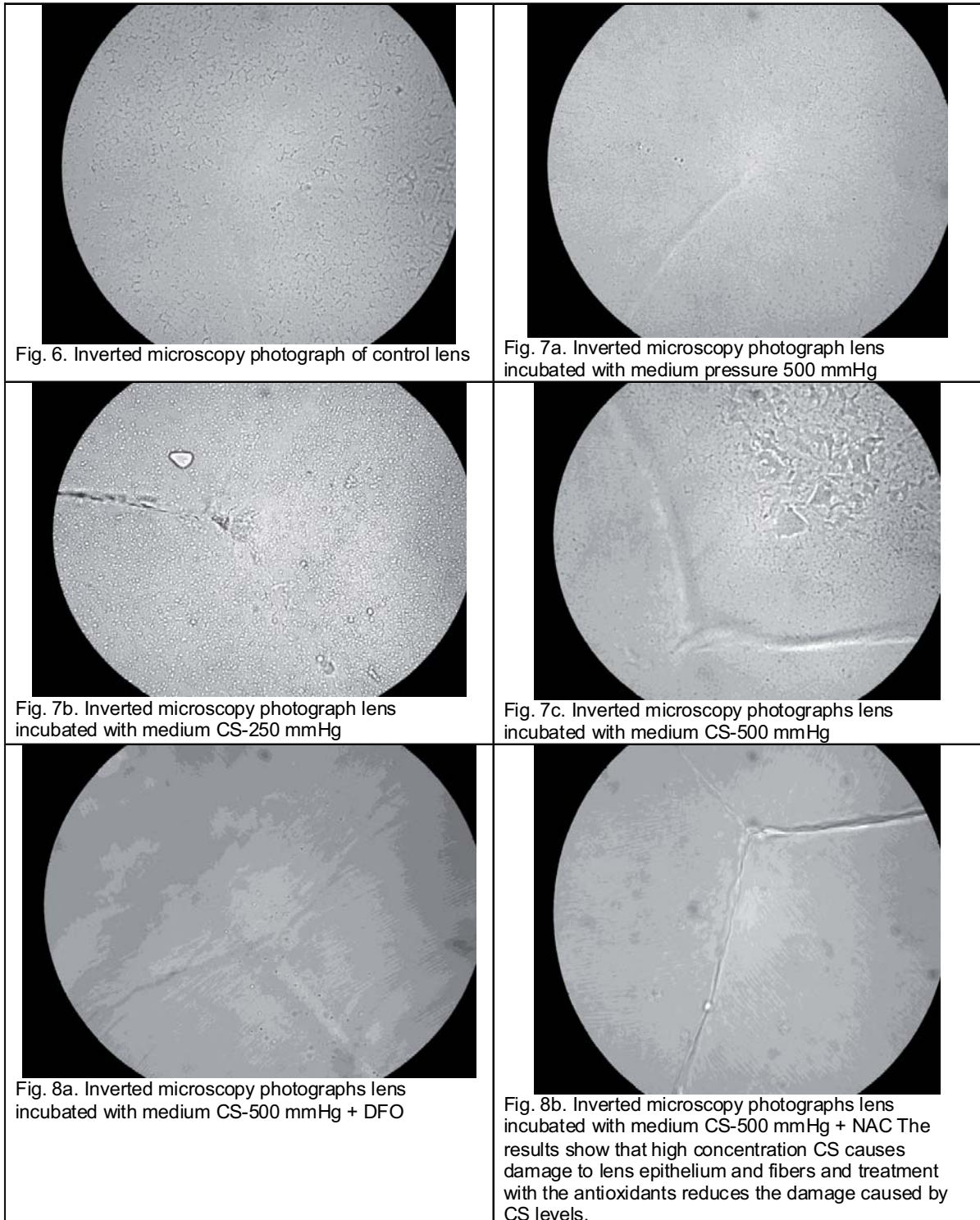


Fig. 5. Day 6. Lens Optical Quality – Intensity



acid staining of the lens epithelium (Pearse A.G., 1972), the method use gallocyanin-chromalum by Einarson with enzyme for specificity. The procedure includes fixation of the samples with methanol for 30 min, incubation with the gallocyanin-chromalum solution for 48 hours. The chromalum ($K_2SO_4 \cdot Cr_2(SO_4)_3 \cdot 24H_2O$) with gallocyanin at pH = 1.64 binds to nucleic acids and give

it dark blue color.

Reactive Oxygen Species (ROS) in epithelial cells lens were detected with 5-(and 6-)chloromethyl-2',7'-dichlorodihydrofluorescein diacetate, acetyl ester (CM-H₂DCFDA, C6827) measuring the level of cellular oxidation in the cells of lens epithelium. When oxidising the agent is added to the cells this reagent is converted to fluo-

rescent isomer. The fluorescent signal was detected with a fluorescence microscope, using sources of excitement and filters, corresponding to fluorescein. Levels of ROS were measured by measuring fluorescent intensity of the cells in culture. Nuclei were labeled by Propidium Iodide.

The Quantitative intensities of the histochemistry reactions in central and equatorial zones was be done using the program Image-Pro Plus, measuring Integrated Optical Density in each cell using 30-50 cells of each slide. A change is defined as significant if the difference between control and treated groups reaching value of $P < 0.05$.

Results Optical Analysis

Lens optical quality was tested every 24 hours. Our optical system can measure minute changes in lens transparency as demonstrated by changes in focal length and transmittance. A 670 nm diode laser with the beam parallel to the axis of the lens was directed towards the cultured lens along one meridian in 0.5 mm increments. After passing through the lens, the laser beam is refracted and the system determines the back vertex focal length for every beam position. Each scan consists of measurements of the same beam from 22 different points across the lens. A lens of good optical quality is able to focus the laser beam from the various locations.

When the lens is damaged its ability to focus the laser beam is altered. The blue line connects the points of the Back Vertex Distance for each ray passing through the lens. The pink line shows the relative intensity of each beam – transmitted intensity normalized to the control lenses. Focal length variability represented the variation in the focal lengths of the 22 beams passed through the lens during each scan and was calculated as the standard error of the mean of the 22 focal lengths. Each point on the graph represents the average of the lenses of that treatment.

Control lenses (red) show almost no variation in focal length during the 6

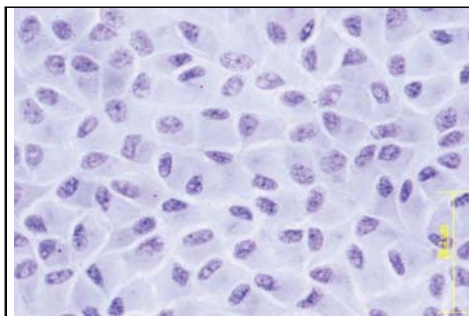


Fig. 9. Control lens epithelium-center. Intact cells, each one with nucleus, with native.

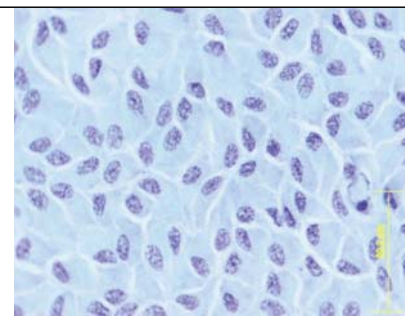


Fig. 10a. Epithelium cells. Pressure 500 mmHg Visible changes in comparison with control it isn't observed.

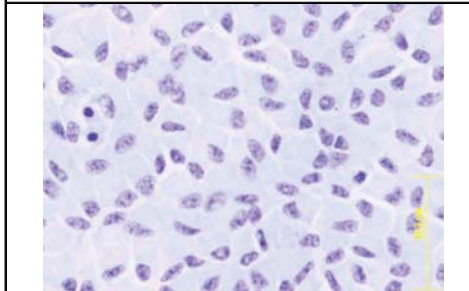


Fig. 10b. Epithelium cells. CS-250.

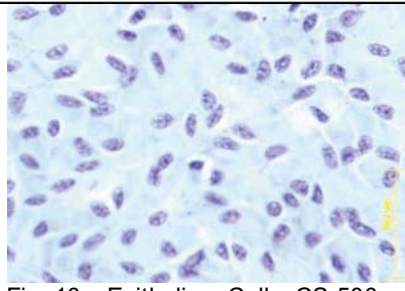


Fig. 10c. Epithelium Cells. CS-500.

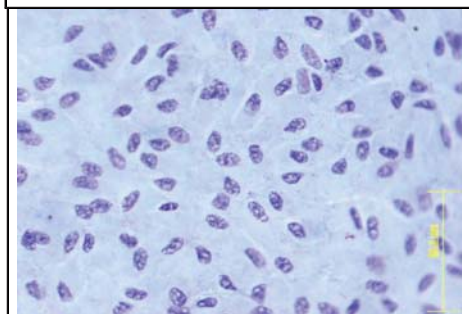


Fig. 11a. Epithelium cells. CS-500 with DFO

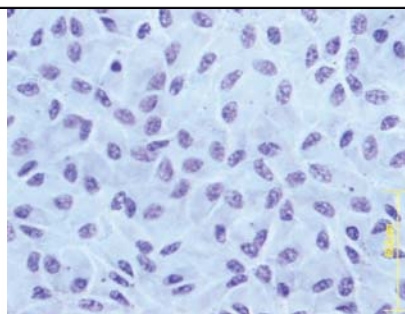


Fig. 11b. Epithelium cells. CS-500 with NAC. Antioxidants a little reduced the damage caused by the high maintenance of CS.

days of the culture (Figure 5). On the other hand, lenses exposed to the different treatments show variation in focal length (damage) starting from about 48 hours after initial exposure to CS -250 and 500 mmHg. For the CS treatment, damage can be observed on day 3. The lenses try to correct the damage (days 4-6). Damage increases on day 4 and repair occurs again from day 5, then the damage increased again.

Lenses incubated with the CS and antioxidants retain their optical quality up to day 3-4 of the culture, but later focal length variability increased even more than in the treatment. Lenses incubated with CS and the antioxidant show damage one day later than those with DFO alone, but the NAC improve lens optical quality in terms of focal length variability.

Inverted Microscopy photographs

The results show that high concentration CS causes damage to lens epithelium and fibers and treatment with the antioxidants reduces the damage caused by CS levels.

Nucleic Acid Staining of the Lens Epithelium Cells

These graphics show that under the influence of CS the optical density of nucleic acids in cages of an epithelium varies. As the area of cages changes also.

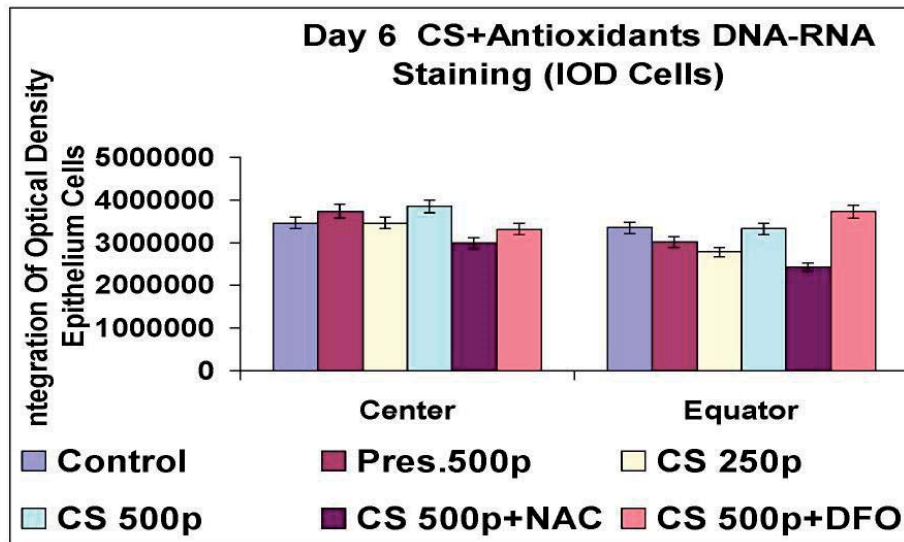


Fig. 12. Integration of optical density epithelium cells. DNA/RNA staining

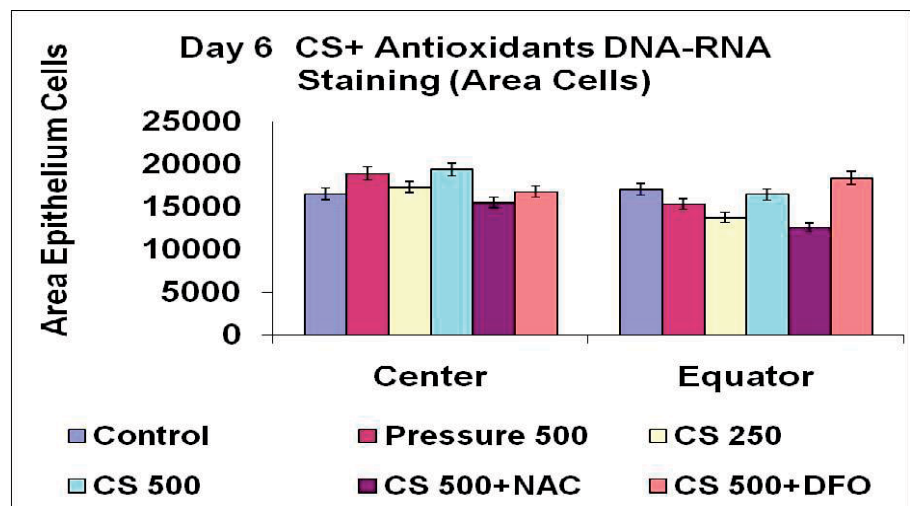


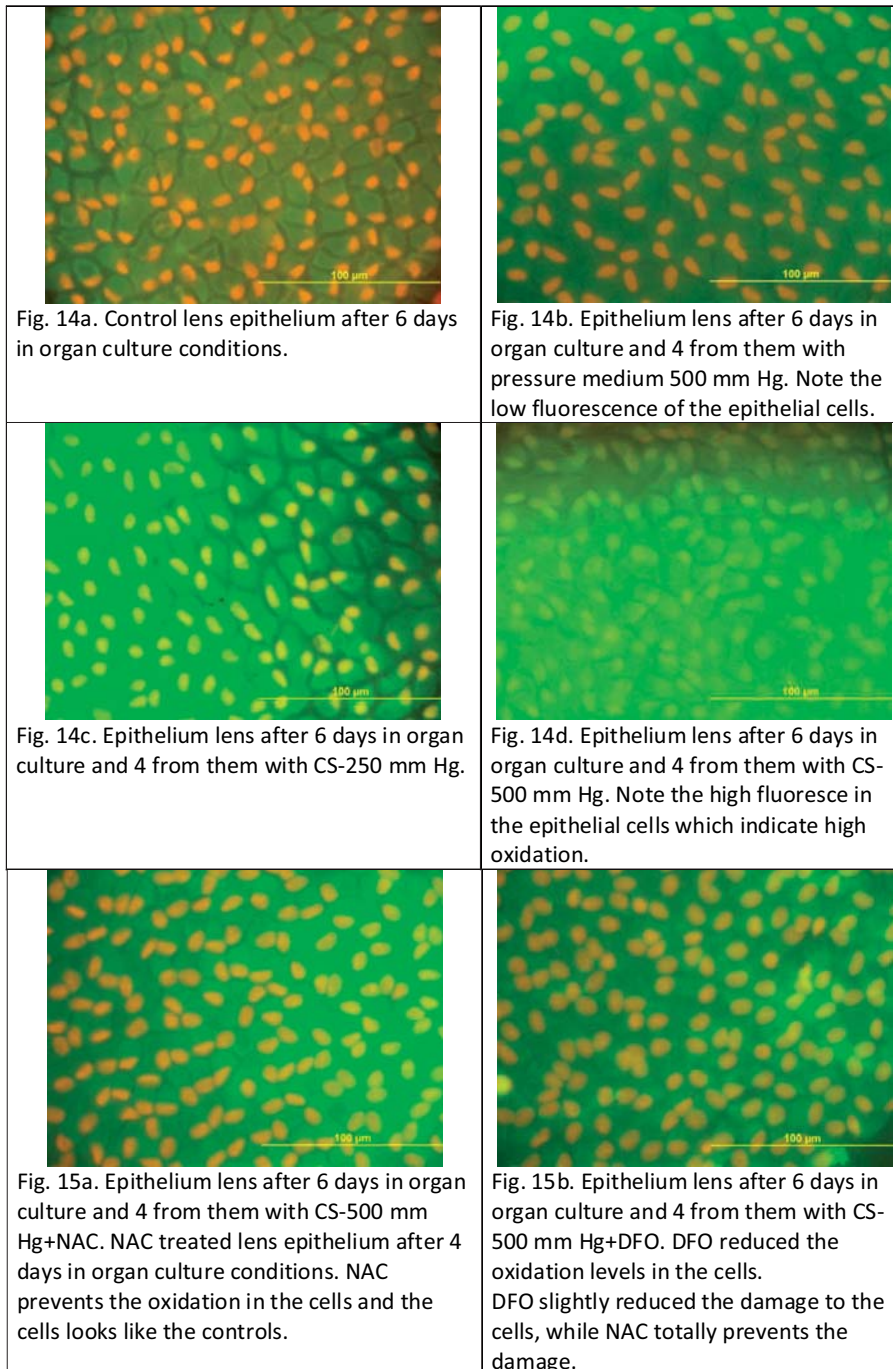
Fig. 13. Area epithelium cells. DNA/RNA staining.

However, the DFO and NAC correct this shortcoming.

Detection of Oxidative Stress

The antioxidants protective effect of each of the two agents were compared using the 5,6-chloromethyl-2',7'-dichlorodihydrofluorescein diacetate (DCF) assay. Formation of ROS in the epithelium was monitored and detected, by fluorescence, in intact bovine epithelial cells layers, from the different treatment groups. Figure 14a,b. shows a molecule of non fluorescent (reduced and acetylated) DCF.

DFO slightly reduced the damage to the cells, while NAC totally prevents the damage. The epithelium from lenses treat-



is likely that NAC and DFO could provide a beneficial outcome.

Cigarette smoke is a complex aerosol consisting of thousands of various constituents including reactive oxygen and nitrogen free radicals, toxic aldehydes and more. Previous epidemiological studies have identified tobacco smoking as a risk factor for sarcopenia. Clinical, in vivo and in vitro studies have revealed CS-induced skeletal muscle damage due to impaired muscle metabolism, increased inflammation and oxidative stress, over-expression of atrophy related genes and activation of various intracellular signaling pathways (Rom O, Kaisari S, Aizenbud D, Reznick AZ., 2012)

Therefore it is suggested that results from accumulation of changes caused by highly re-

active oxygen-derived species (ROS), including free radicals, known to induce cell damage [Rosini M, Andrisano V, Bartolini M, et al., 2005]. Continuous exposure of the lens to oxidative stress has been shown to lead to reduced lens clarity and cataract formation [Marsili S, Salganik RI, Albright CD, et al., 2004]. Since the epithelial layer contains the bulk of the metabolic enzymes, and since labile iron has been incriminated as a necessary factor for injurious oxidative stress, the damage to the epithelial

ed with in the presence of NAC looks the same as the controls.

We have demonstrated a role for oxidative damage CS formation. This is in accord with previous proposals (Lou MF, 2003; Shin DM, Jeon JH, Kim CW, et al. 2004; Tarwadi K, Agte V., 2004). Thus, the possible use of antioxidant agents in cataract prevention and treatment is highly appealing. Future investigations should consider this possibility in human subjects. It

active oxygen-derived species (ROS), including free radicals, known to induce cell damage [Rosini M, Andrisano V, Bartolini M, et al., 2005]. Continuous exposure of the lens to oxidative stress has been shown to lead to reduced lens clarity and cataract formation [Marsili S, Salganik RI, Albright CD, et al., 2004]. Since the epithelial layer contains the bulk of the metabolic enzymes, and since labile iron has been incriminated as a necessary factor for injurious oxidative stress, the damage to the epithelial

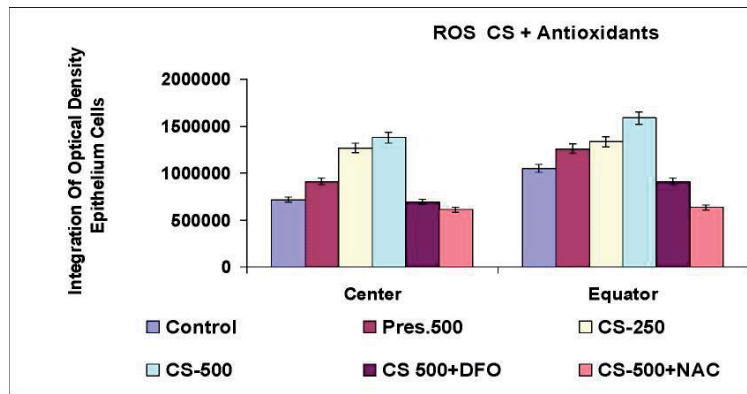


Fig. 15c. Integration of optical density epithelium lens. ROS.

layer can precede and account for the development of lens opacity [Giblin FJ, McCready JP.,1983]. Indeed, the levels of redoxactive iron were found elevated in the advanced forms of cataract [Garner B, Davies MJ, Truscott RJ.,2000].

The results work Khanna AK, Xu J, Mehra MR. (2011) have demonstrated that an N-acetyl cysteine (NAC) treatment significantly reduced tobacco-exposed induced infarct size and percent fractional shortening. A significantly increased LV end-systolic diameter was observed in tobacco-exposed sham compared to tobacco-naive sham (4.92 ± 0.41 vs 3.45 ± 0.33 ; $P < 0.05$), and tobacco-exposed MI compared to tobacco-naive MI (8.24 ± 0.3 vs 6.1 ± 0.49 ; $P < 0.01$) rats. Decreased intracardiac mRNA expression of the markers of inflammation, tissue repair and oxidative stress and circulating levels of pro-inflammatory cytokines accompanied these positive effects of NAC. The treatment of tobacco-exposed MI rats with NAC resulted in significantly increased levels of intracardiac mRNA expression of antioxidants, including superoxide dismutase, thioredoxin and nuclear factor-E2-related factor 2, as well as circulating levels of glutathione (7 ± 0.12 vs 10 ± 0.18 ; $P < 0.001$), where the levels were almost identical to the tobacco-naive sham rats. These findings identify a novel post-infarction therapy for amelioration of the adverse effects of tobacco exposure on the infarcted myocardium and advocate the use of dietary supplement antioxidants for habitual smokers to prevent and reverse cardiovascular adverse effects.

Avunduk AM, Yardimci S, Avunduk MC, Kurnaz L (1999) made the conclusion that cataractogenesis after tissue influence of a smoke in rats was connected with iron accumulation, and concurrent deferoxamine (DFO) therapy prevented such cataract formation. Cigarette smoking is an important risk factor for cardiovascular, respiratory, and

malignant diseases. There is also a strong association between smoking and a number of common eye diseases, which include Graves' ophthalmopathy, age-related macular degeneration, glaucoma, and cataract (Cheng AC, Pang CP, Leung AT, Chua JK, Fan DS, Lam DS.,2000). Despite the multifactorial aetiology of these ocular syndromes, smoking is an independent risk factor that has dose-response effects. It causes morphological and functional changes to the lens.

Conclusions

We have shown that increasing the amount of smoke, for relatively short time, causes a sharp increase in the damage to the lens. Lenses measured in focal length showed damage starting from about 48 hours after initial exposure to high concentrations CS.

Lens intensity shows higher transparency as a result of the antioxidants treatment. Lens epithelium stained for nucleic acids show that N-acetyl-L-cysteine reduced the damage to lens epithelial cells caused by high CS exposure. The results will help in understanding the mechanisms of damage to the eye lens by CS and whether oxidation is involved in the damage.

Smoking is an independent risk factor that has dose-response effects. It causes morphological and functional changes to the lens. Based on the independent effects of NAC and DFO, we propose to use these agents as means of prevention and/or treatment of cataract associated with ciga-

rette smoking.

This study was supported by Guzik Research Fund

References

1. Ambrose JA, Barua RS. The pathophysiology of cigarette smoking and cardiovascular disease: an update. *J Am Coll Cardiol.* 2004 May 19;43(10):1731-7.
2. Lee J, Taneja V, Vassallo R. Cigarette smoking and inflammation: cellular and molecular mechanisms. *J Dent Res.* 2012 Feb;91(2):142-9.
3. Avunduk AM, Yardimci S, Avunduk MC, Kurnaz L, Kozkar MC. Determinations of some trace and heavy metals in rat lenses after tobacco smoke exposure and their relationships to lens injury. *Exp Eye Res.* 1997 Sep;65(3):417-23.
4. Fletcher AE. Free radicals, antioxidants and eye diseases: evidence from epidemiological studies on cataract and age-related macular degeneration. *Ophthalmic Res.* 2010;44(3):191-8.
5. Weiner D, Khankin EV, Levy Y, Aizenbud D, Reznick AZ. Effects of cigarette smoke on salivary protein tyrosine nitration. *Eur J Med Res.* 2010 Nov 4;15 Suppl 2:211-6.
6. Khanna AK, Xu J, Mehra MR. Antioxidant N-acetyl cysteine reverses cigarette smoke-induced myocardial infarction by inhibiting inflammation and oxidative stress in a rat model. *Lab Invest.* 2011 Oct 3. doi: 10.1038/labinvest.2011.146.
7. Nagler R, Lischinsky S, Diamond E, Drigues N, Klein I, Reznick AZ. Effect of cigarette smoke on salivary proteins and enzyme activities. *Arch Biochem Biophys.* 2000 Jul 15;379(2):229-36.
8. Avunduk AM, Yardimci S, Avunduk MC, Kurnaz L. Cataractous changes in rat lens following cigarette smoke exposure is prevented by parenteral deferoxamine therapy. *Arch Ophthalmol*, vol. 117, no. 10, pp. 1368-72, 1999.
9. Reddan J, Sevilla M, Giblin F, Padgaonkar V, Dziedzic D, Leverenz V. Tempol and deferoxamine protect cultured rabbit lens epithelial cells from H₂O₂ insult: insight into the mechanism of H₂O₂-induced injury. *Lens Eye Toxic Res*, vol. 9, no. 3-4, pp. 385-93, 1992.
10. Atkuri KR, Mantovani JJ, Herzenberg LA, Herzenberg LA. N-Acetylcysteine—a safe antidote for cysteine/glutathione deficiency. *Curr Opin Pharmacol*, vol. 7, no. 4, pp. 355-9, 2007.
11. Dovrat A, Weinreb O Recovery of lens optics and epithelial enzymes after ultraviolet A radiation. *Invest Ophthalmol Vis Sci.* 1995 Nov;36(12):2417-24.
12. Dovrat A, Weinreb O Effects of UV-A radiation on lens epithelial NaK-ATPase in organ culture. *Invest Ophthalmol Vis Sci.* 1999 Jun;40(7):1616-20.
13. Dovrat A, Sivak JG. Long-term lens organ culture system with a method for monitoring lens optical quality. *Photochem Photobiol.* 2005 May-Jun;81(3):502-5.
14. Sivak JG, Yoshimura M, Weerheim J, Dovrat A. Effect of hydrogen peroxide, DL-propranolol, and prednisone on bovine lens optical function in culture. *Invest Ophthalmol Vis Sci* 1990; 31: 954-963.
15. Faddeev A.P. Effect of X-ray radiation on an epithelium of lens animals. Abstract. Odessa, 1962, page 8-9.
16. Bormusova E.A. Histochemical characteristics of the lens epithelium of the rabbit eye in ontogenesis (oxyreductase, hidrolase). *Ophthalmol. G., Odessa*, 1979, p.494-497.
17. A.G. Everson Pearse. *Histochemistry. Theoretical and Applied.* 3 edition. Edinburgh and London, 1972.
18. Lou MF. Redox regulation in the lens, *Prog Retin Eye Res*, vol. 22, no. 5, pp. 657-82, 2003. Shin DM, Jeon JH, Kim CW, et al. Cell type-specific activation of intracellular transglutaminase 2 by oxidative stress or ultraviolet irradiation: implications of transglutaminase 2 in age-related cataractogenesis. *J Biol Chem*, vol. 279, no. 15, pp. 15032-9, 2004.
19. Tarwadi K, Agte V. Linkages of antioxidant, micronutrient, and socioeconomic status with the degree of oxidative stress and lens opacity in Indian cataract patients. *Nutrition*, vol. 20, no. 3, pp 261-7., 2004.
20. Oren Rom, Sharon Kaisari, Dror Aizenbud, and Abraham Z. Reznick. Cigarette smoke and muscle catabolism in C2 myotubes. *MAD*, 2013 (in Publ.)
21. Rosini M, Andrisano V, Bartolini M, et al. Rational approach to discover multipotent anti-Alzheimer drugs. *J Med Chem*, vol. 48, no. 2, pp. 360-3, 2005.
22. Marsili S, Salganik RI, Albright CD, et al. Cataract formation in a strain of rats

- selected for high oxidative stress, "Exp Eye Res", vol. 79, no. 5, pp. 595-612, 2004.
24. Giblin FJ, McCready JP. The effect of inhibition of glutathione reductase on the detoxification of H₂O₂ by rabbit lens, "Invest Ophthalmol Vis Sci", vol. 24, no. 1, pp. 113-8, 1983.
 25. Garner B, Davies MJ, Truscott RJ. Formation of hydroxyl radicals in the human lens is related to the severity of nuclear cataract, "Exp Eye Res", vol. 70, no. 1, pp. 81-8, 2000.
 26. Khanna AK, Xu J, Mehra MR. Antioxidant N-acetyl cysteine reverses cigarette smoke-induced myocardial infarction by inhibiting inflammation and oxidative stress in a rat model. Lab Invest. 2011, Oct 3.p.146.
 27. Avunduk AM, Yardimci S, Avunduk MC, Kurnaz L. Cataractous changes in rat lens following cigarette smoke exposure is prevented by parenteral deferoxamine therapy. Arch Ophthalmol. 1999 Oct;117(10):1368-72.
 28. Cheng AC, Pang CP, Leung AT, Chua JK, Fan DS, Lam DS. The association between cigarette smoking and ocular diseases. Hong Kong Med J. 2000 Jun;6(2):195-202.

Резюме

ВЛИЯНИЕ ТАБАЧНОГО ДЫМА НА МЕТАБОЛИЗМ КУЛЬТУРЫ ТКАНИ ХРУСТАЛИКА ГЛАЗА КРУПНОГО РОГАТОГО СКОТА И ЕГО ВОЗМОЖНАЯ ЗАЩИТА АНТИОКСИДАНТАМИ

Бормусова Э.А., Резник А.З.

Факультет медицины Раппопорта, Технион —

Израильский технологический институт, Хайфа, Израиль.

Цель исследования: Предполагается, что дым от курения сигарет (КС) является основным экологическим фактором риска для развития множества болезней человека и может также вызвать развитие катаракты, помутнения хрусталика глаза, что является главной причиной слепоты. Было проведено исследование для изучения воздействия дыма на физиологическую целостность и метаболизм органной культуры хрусталиков глаза. Хрусталики глаза в органной культуре метаболически активны и имеют функциональные системы защиты,

таким образом они являются оптимальной моделью для изучения воздействия дыма. Также было оценено возможное защитное действие N-ацетил-L-цистеина (NAC), который является исходным веществом для глутатиона и хелатирующего агента железа дефероксамина (ДФО) как потенциальных защитных веществ против катаракты.

Методы исследования: Хрусталики глаза крупного рогатого скота были выдержаны при температуре 35°C в условиях органной культуры в течение 6 дней. Изучаемые хрусталики в течение 4 дней ежедневно насыщали сигаретным дымом в различных дозировках при давлении 250,500 фунтов на кв. дюйм в культурной среде. Две экспериментальные группы хрусталиков были обработаны антиоксидантами NAC(1 ммоль) и ДФО (2.5 микрограмм на мл). Для ежедневного тестирования обеих групп, обрабатываемой и контрольной группы, была использована автоматизированная сканирующая лазерная система. В конце культурного периода хрусталики были исследованы под инверсионным микроскопом. Были использованы препараты передней части однослойного эпителия хрусталиков глаза крупного рогатого скота, полученные во всех экспериментах. Для этой цели внешний слой был вскрыт и кристаллические волокна хрусталика были вычищены. Тогда на предметном стекле оставался только внешний слой и клеточный однослойный эпителий. Изменения в морфологии клеток и содержании нуклеиновых кислот оценивались при помощи метода ДНК-РНК окрашивания Айнарсона. Содержание активных форм кислорода (АФК) измерялось при помощи диацетата 5-(и 6-) хлорметил -2',7'-дихлордигидрофлюоресцеина, ацетиловый эфир (СМ-Н2DCFDA, С6827) использовался для измерения уровня клеточного окисления в клетках эпителия хрусталиков. Уровни содержания АФК измерялись мониторингом яркости люминесцентного излучения относительно контрольных культур

под флюоресцентным микроскопом. Нуклеиновые кислоты были окрашены йодидом пропидия.

Результаты исследования: Воздействие сигаретного дыма в культуральной среде под отрицательным давлением, оптические свойства хрусталиков и структурные изменения проявились в уменьшении светопропускаемости, росте изменчивости фокусного расстояния и уменьшении морфологической целостности, таком как гиперплазия и гипертрофия клеток эпителия. Группа, которая подвергалась воздействию NAC и DFO, продемонстрировала меньшие оптические изменения, представленные меньшими повреждениями хрусталика. Изменения объёма хрусталиков практически не проявились. Однако, исходный уровень люминесцентного излучения контрольной группы был различным в разных экспериментах. Также было очевидным увеличение образования АФК в культурах в зависимости от дозы.

Выводы: Было продемонстрировано, что увеличение воздействия КС за относительно небольшое время вызывает резкое возрастание количества повреждённых хрусталика. Курение как независимый фактор риска, зависит от дозы. Оно вызывает морфологические и функциональные изменения хрусталика. Основываясь на независимом действии NAC и DFO предлагается их возможное использование как средств профилактики и/или лечения катаракты у заядлых курильщиков.

Резюме

ВПЛИВ ТЮТЮНОВОГО ДИМУ НА МЕТАБОЛІЗМ КУЛЬТУРИ ТКАНИНИ КРИШТАЛИКА ОКА ВЕЛИКОЇ РОГАТОЇ ХУДОБИ ТА ЙОГО МОЖЛИВИЙ ЗАХИСТ АНТИОКСИДАНТАМИ

Бормусова Е.А., Резник А.З.

Медичний факультет Раппопорта, Техніон —Ізраїльський технологічний інститут, Хайфа, Ізраїль

Мета дослідження: Передбачається, що дим від паління сигарет (ПС)

є основним екологічним фактором ризику для розвинення багатьох хвороб людини і може також викликати розвинення катаракти, помутніння кристалика ока, що є головною причиною сліпоті. Було проведено дослідження для вивчення впливу диму на фізіологічну цілісність і метаболізм органної культури кристаликів ока. Кристалики ока в органній культурі метаболічно активні та мають функціональні системи захисту, таким чином вони є оптимальною моделлю для вивчення впливу диму. Також була оцінена можлива захисна дія N — ацетил — L- цистеїна (NAC), котрий є вихідною речовиною для глутатіона та хелатируючого агента заліза дефероксаміна (DFO) як потенційних захисних речовин проти катаракти.

Методи дослідження: Кристалики ока великої рогатої худоби були витримані при температурі 35°C в умовах органної культури впродовж 6 днів. Кристалики, що вивчалися, впродовж 4 днів щодобово насичували сигаретним димом у різних дозуваннях при тиску 250,500 фунтів на кв. дюйм в культурному середовищі. Дві експериментальні групи кристаликів були оброблені антиоксидантами NAC(1 ммоль) та DFO (2.5 мікрограм на мл). Для щоденного тестування обох груп, тієї, що була оброблена, та контрольної групи, була використана автоматизована скануюча лазерна система. В кінці культурного періоду кристалики були досліджені під інверсійним мікроскопом. Були використані препарати передньої частини одношарового епітелію кристаликів ока великої рогатої худоби, отримані в усіх експериментах. Для цієї мети зовнішній шар був розкритий та кристалічні волокна кристалика були вичищені. Тоді на наочному склі залишався лише зовнішній шар і клітинний одношаровий епітелій. Зміни в морфології кліток і вмісті нуклеїнових кислот оцінювалися за допомогою методу ДНК-РНК фарбування Айнарсона. Вміст активних форм кисню (АФК) вимірювався за допомогою діацетату 5-(і 6-)

хлорметіл -2'',7''-дихлордигідрофлюоресцеїна, ацетиловий ефір (СМ-Н2DCFDA, С6827) використовувався для виміру рівня клітинного окислення в клітках епітелію кришталиків. Рівні вмісту АФК вимірювалися моніторингом яскравості люмінесцентного випромінювання відносно контрольних культур під флюоресцентним мікроскопом. Нуклеїнові кислоти були забарвлені йодидом пропідія.

Результати дослідження: Дія сигаретного диму в культуральному середовищі під негативним тиском, оптичні властивості кришталиків і структурні зміни виявилися в зменшенні світлопроникності, зростанні мінливості фокусної відстані і зменшенні морфологічної цілісності, такому як гіперплазія і гіпертрофія кліток епітелію. Група, яка піддавалася дії NAC і DFO, продемонструвала менші оптичні зміни, представлені мен-

шими пошкодженнями кришталика. Зміни об'єму кришталиків практично не виявилися. Проте, вихідний рівень люмінесцентного випромінювання контрольної групи був різним в різних експериментах. Також було очевидним збільшення утворення АФК в культурах залежно від дози.

Висновки: Було продемонстровано, що збільшення дії ПС за відносно невеликий час викликає різке зростання кількості пошкоджень кришталика. Куріння як незалежний чинник ризику, залежить від дози. Воно викликає морфологічні і функціональні зміни кришталика. Грунтуючись на незалежній дії NAC і DFO пропонується їх можливе використання як засобів профілактики і лікування катаракти у завзятих курців.

*Впервые поступила в редакцию 24.04.2013 г.
Рекомендована к печати на заседании редакционной коллегии после рецензирования*

УДК 517.112:612.8+615.462.03

СРАВНИТЕЛЬНАЯ ЛЕЧЕБНАЯ ЭФФЕКТИВНОСТЬ ОРАЛЬНЫХ АППЛИКАЦИЙ МУКОЗАЛЬНЫХ ГЕЛЕЙ С ПРО- И ПРЕБИОТИКАМИ У КРЫС С ЭКСПЕРИМЕНТАЛЬНЫМ ДИСБИОЗОМ

Левицкий А.П.¹, Селиванская И.А.¹, Воронкова А.В.², Гончарук С.В.¹, Левченко Е.М.¹

ГУ "Институт стоматологии НАМН" (г. Одесса)¹

ВГУУ "Украинская медицинская стоматологическая академия" (г. Полтава)²

При экспериментальном дисбиозе у крыс, вызванном линкомицином, существенно повышается в сыворотке крови уровень маркеров воспаления (эластазы, МДА), снижается активность каталазы и индекс АПИ, растёт активность уреазы и снижается активность лизоцима, что приводит к резкому увеличению степени дисбиоза. Аппликации геля с пробиотиками («Симбитер») или с пребиотиками («Квертулин») снижает степень дисбиоза и воспаления, увеличивает активность каталазы и индекс АПИ. По антидисбиотическому действию более эффективным оказался гель «Квертулин».

Ключевые слова: дисбиоз, воспаление, пробиотики, пребиотики, кверцетин.

Введение

Общеизвестно, что в организме человека и теплокровных животных обитает огромное количество микробов, выполняющих ряд полезных функций, позволяющих считать их особым мик-

робным «организмом» и рассматривать как физиологическую микробную систему [1, 2]. Нарушение видового состава и количественного содержания микроорганизмов, обитающих в человеческом организме, определяется как дисбиоз