
338.436:637.1

20

[8, . 346].

: B. . . .

. . . i . . . Moc c o, . . .

01.01.2010 . . .

. 1.

1.

01.01.2010 .(

[4])

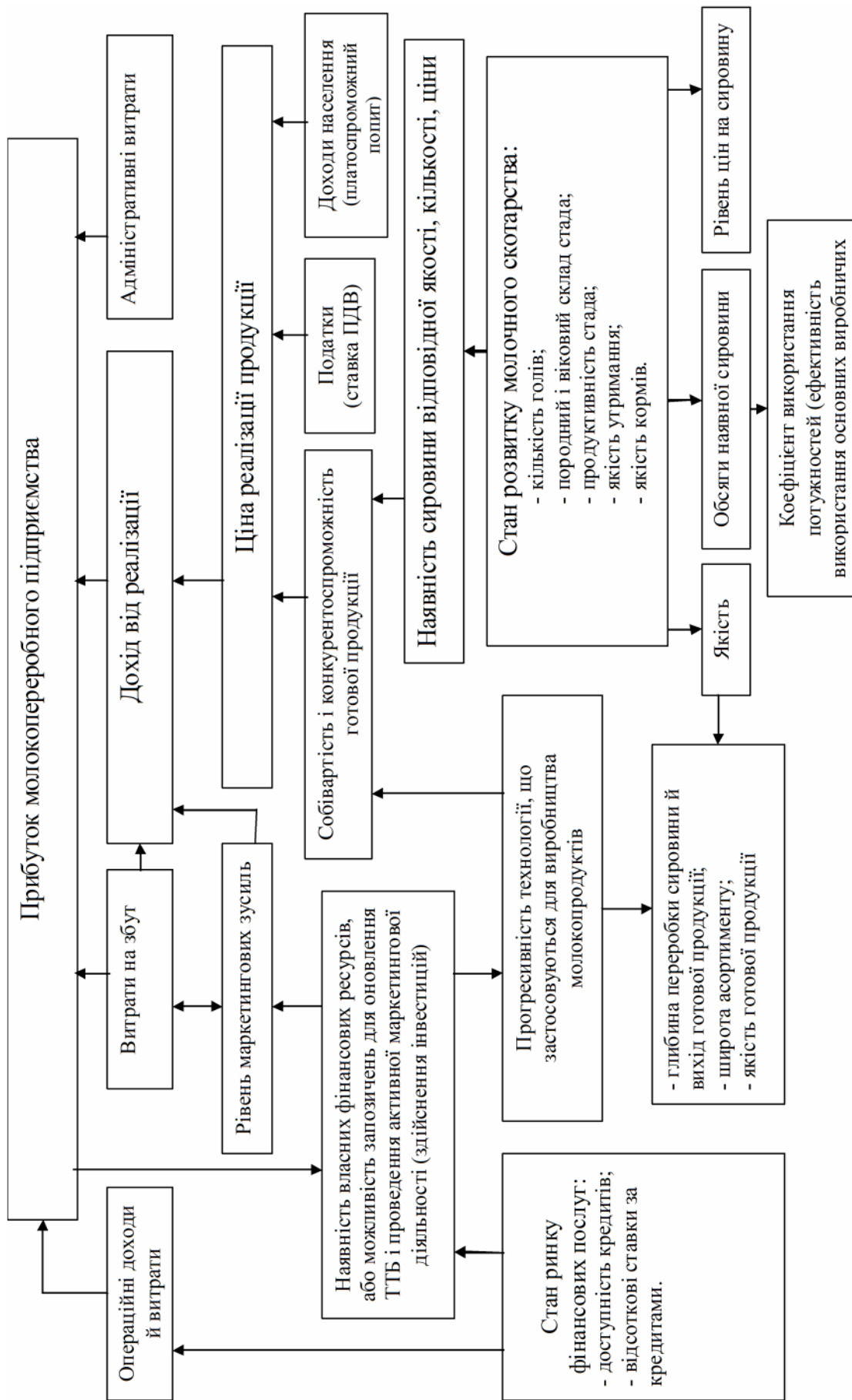
		(ISO 9001 HACCP)
	5	1
	29	1
	20	-
	18	3
	18	-
	3	-
	15	1
	12	-
	33	3
	5	2
	14	-
	14	-
	12	2
	18	3
	16	11
	13	-
	9	1
	12	-
	21	5
	17	2
	20	2
	14	2
	4	1
	10	-
	15	1
	368	41

(), [3, . 428]. () [5, . 265]: = : (1)

, (). [6, . 150].

[1;7] = [- (1-k) (+)+] ÷ (1- k - k) (2),

; k - ;



.2.

(3)
p, c, cena

2. / - . : , 2005. - 292 .

() / , // -

.- 2005. - 200 . -

3. (, -

.2. , , , , , , , , ,) : -

/ [. . . . ,] - . : , 2004. - 688 .

4. [. . . .] . - -

: <http://www.vet.gov.ua/db/cf>

5. 3 . . 2 / [.] - . : , 2000. - 848 .

6. : : : : -

/ , -

.- . : , 2003. - 280 . -

7. , -

/ // -

.- 2001. - 4. - . 13-19. -

8. (. . . . , ,) . -

).- . : , 2001. - 575 . -

1. : : : : -

338.436:637.1

338.436:637.1

UDC 338.436:637.1

. The factors affecting the generation of profits dairy plants, determine the mechanism of interaction between them. Graphs of local relationships between certain factors of the formation of profit, and identifies four classes of tolerance, which means there are four independent characteristics that determine the relationship between indicators.

15.11.2011 .