

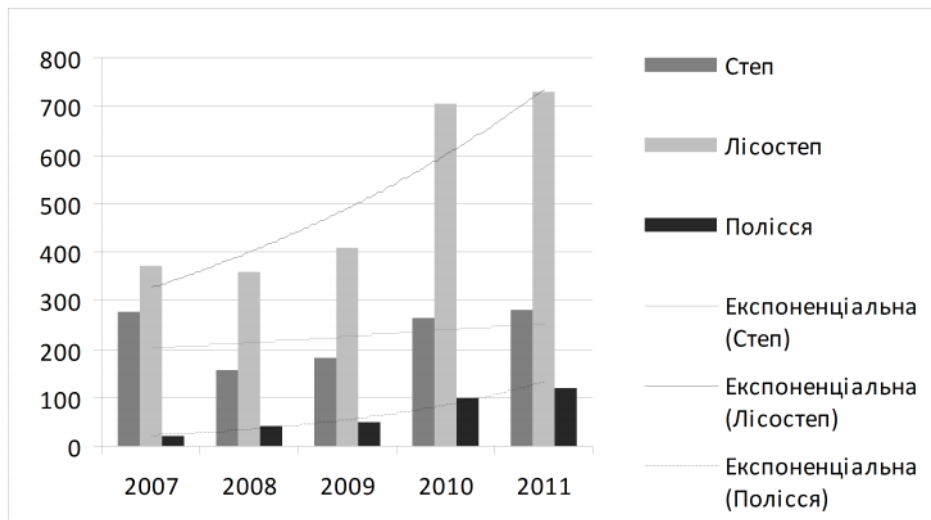
The modern consisting of production of soy opens up of Ukraine. A structure and basic indexes of gross collections of soy in Ukraine and factors is described influences, determining their efficiency in the conditions of market.

2000 (.) [2; 3], [4; 5]. [6; 7]. [1]. [8; 9]. [10]. 2008-2015”, 336/53 28 2008

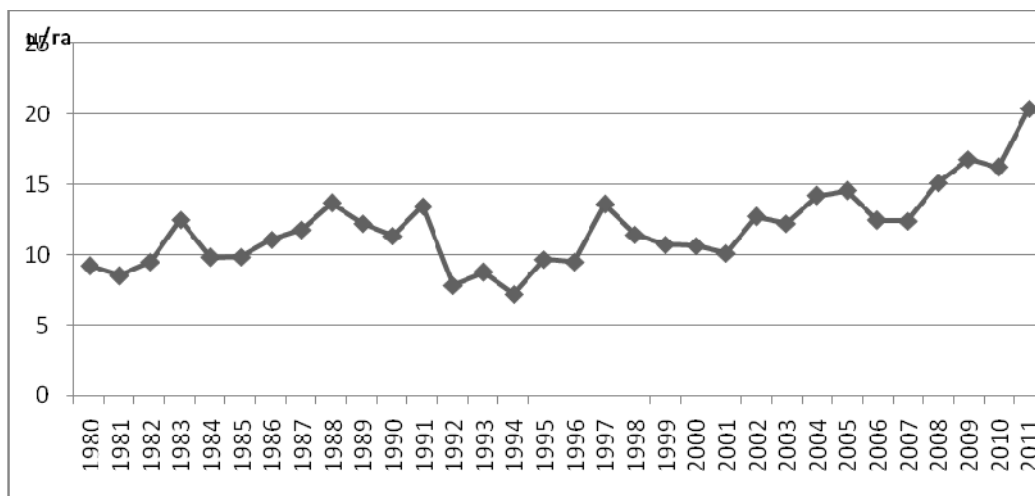
1. 2007-2011 .

| | 2007 . | 2008 . | 2009 . | 2010 . | 2011 . | 2011 . 2007 . | | |
|---|--------------|---------------|---------------|----------------|---------------|---------------|---------------|--------------|
| | | | | | | . | , % | , % |
| | 275,4 | 156,59 | 182,06 | 264,77 | 282,2 | 6,8 | 102,47 | 2,47 |
| | 370,5 | 359,13 | 409,72 | 706,58 | 728,9 | 358,39 | 611,69 | 511,69 |
| | 19,3 | 41,47 | 49,25 | 98,68 | 118,3 | 98,96 | 196,73 | 96,73 |
| ' | 665,3 | 557,19 | 641,03 | 1070,03 | 1129,4 | 464,15 | 169,77 | 69,77 |

12,2
 / , 2011 . 20 / (. 2).
 69,77%.
 5,12 . 2008-2010 .
 2008 . – , 2007 . 2007-2011 . (. 3).
 (. 1).
 10 . 2.

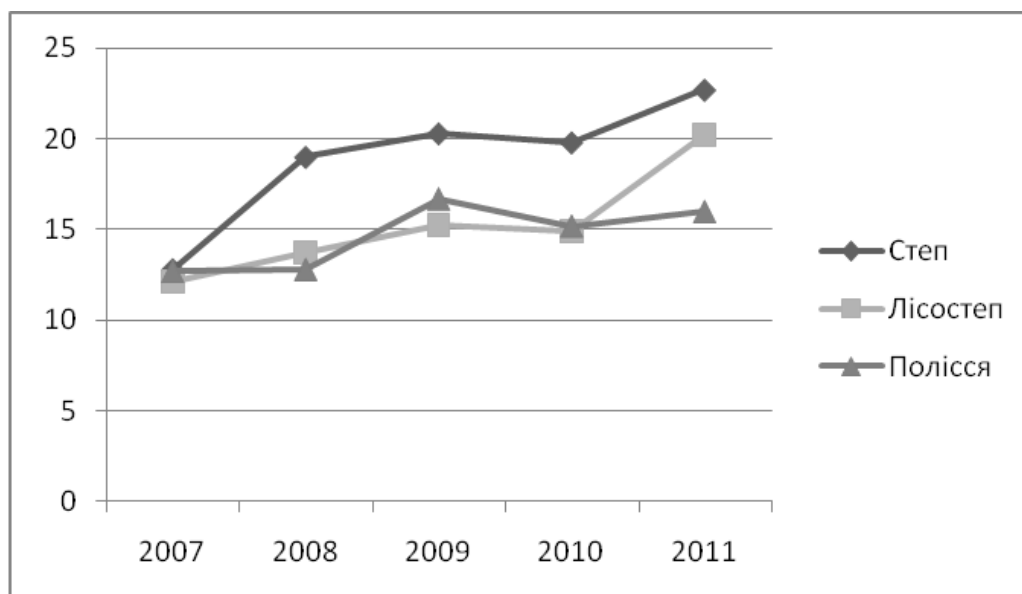


1. 2007-2011 ., .



.2.

1980-2011



.3.

2007-2011 , /

2011 . 4669,6 . , 25,5 . , 100,1% .
126%.

2.

2011 .

| | , ' / , | | , ' / , | | , ' / , | | | / | % |
|---|---------|--------|---------|--------|---------|---------|---------|--------|-------|
| | 0 | 1 | 0 | 1 | 0 0 | , 1 1 | 0 1 | | |
| | 262,5 | 282,9 | 19,8 | 22,7 | 5197,5 | 6421,8 | 5601,4 | - | |
| | 683,5 | 710,7 | 14,9 | 20,2 | 10184,2 | 14356,1 | 10589,4 | - | |
| | 90,9 | 116,9 | 15,2 | 16,0 | 1381,7 | 1870,4 | 1776,9 | - | |
| ' | 1036,9 | 1110,5 | 16,167 | 20,395 | 16763,4 | 22648,3 | 17967,7 | 5884,9 | 135,1 |

2011 . 1189,8 . , 107,1%
2010 .

“ 2008-2015”

“ ”.

2011 ., 135,1% 5884,9 .
2010 .

(1 ,
1 ,
).

635.655:338.432:65.011.47

635.655:338.432:65.011.47

1. :
271 27 2000 [].
: <http://www.licasoft.com.ua/index.php/component/lica/?href=0&view=text& base=1&id=60886& menu=82235>
2. , . .
/- .: , 1993. – 432 .
3. , .
/ // -
. – 2010. – 4. – . 52-56.
4. , . .
/- .: ,
1988. – 112 .
5. ,
/ // :
. – 2008. – 3. – . 24-27.
6. ,
/ //
. - / 2002. – 14 (26). – 446 .
7. ,
: .
/- : - , 2006. – 168 .
8. ,
/ // 2008 :
. , . 15. – : “ ”, 2008. –
. 104-107.
9. ,
/- : “ », 2009. – 48 .
/
10. ,
/ //
[. . . .]. – : <http://udau.edu.ua/library.php?pid=1564>

UDC 635.655:338.432:65.011.47
Boiko Iena Olexandrivna, assistant department of management and administration. Vinnitsa trade and economic institute KNTEU. **Estimation of factor influence on gross collection of soy in Ukraine the method of index analysis.** The modern consisting of production of soy opens up of Ukraine. A structure and basic indexes of gross collections of soy in Ukraine and factors is described influences, determining their efficiency in the conditions of market.
Keywords: gross collection, efficiency of production, government control, index analysis.

20.03.2012 .