

**35.075.2.004.14(477.51) «1917»**

” , , ,  
( , ), [alla-nitchenko@mail.ru](mailto:alla-nitchenko@mail.ru)

: ,

— ,

.

, — , ,

.

, 1917 .

,

,

. ,

, ,

.

: , ,

, .

**Nitchenko A.**, Candidate of Historical Sciences, Associate Professor at Civil, Commercial and Criminal Law Sub-Faculty of Chernihiv Institute of Economics and Management (Ukraine, Chernihiv), [alla-nitchenko@mail.ru](mailto:alla-nitchenko@mail.ru)

### **Chernihiv Government Executive Committee: Creation Fundamentals, Structure and Composition**

Research aims to characterize creation fundamentals, structure and composition of Chernihiv Government Executive Committee. Different methods of research were used for achieving this purpose. Actualization Method enabled to determine scientific importance of the problem. Structural and Functional Analysis Method was used to clarify the peculiarities of Government Executive Committee structure. Quantitative Method and Mathematical Statistics Method allowed to emphasize certain features



,

( - ).

.

( - ).

. - ,

.

- ,

.

, ' ,

, . , . ,

. , . , . , . , . , . , . ,

. , . , . , . , . , . , . , . ,

. , . .

, ,

. , 1920- . .

,

[1]. 2000- . .

,

-

[2]. ,

.

,

1917 . ,

1917 .

1917 .,

20

21 24

50 [3].

1917 .,

14%

– 34%,

– 52%.

2% [3].

1917 .

[4,c.193–207,163–188].

14





1917 .,

,

,

[6, .1 ,3,5,6 ,8–8 ,11,14,16,23 ,27,208–208 ;

8, .2 ,135].

,

,

,

,

[6, .6 ,14,16–16 ,27,81,125,139 ,142 ,144–144 ,147–

148,150,168 ,174 ,176–177,189–190;8, .96 ,110,113,128;7, .69].

,

,

[7, .68].

[7, .83].

[6, .187 ;9, .73]. ,

.

,

[10, .3;11].

.

«

»

[6, .16 ,124,144–144 ,165]. ,

1917 .

[6, .27 ].

,

[12, .14;6, .111 ;8, .104;**117**, .1]. ,

[13].

[14].

2-

[7, .68].

(

),

[7, .68].

( ,

10 . ).

[7, .73,76].

1917 .

(

),

«

—

»

[6, .181].

1917 .

( . .

,

( . ), . .

.).



[6, .201].

[9, .58;15].

( )

14-

: 11-

[6, .183-184].

[6, .182].

1917 .

[6, .226 ].

2

1917 .

3% , - 62%, - 29%  
 (.1).

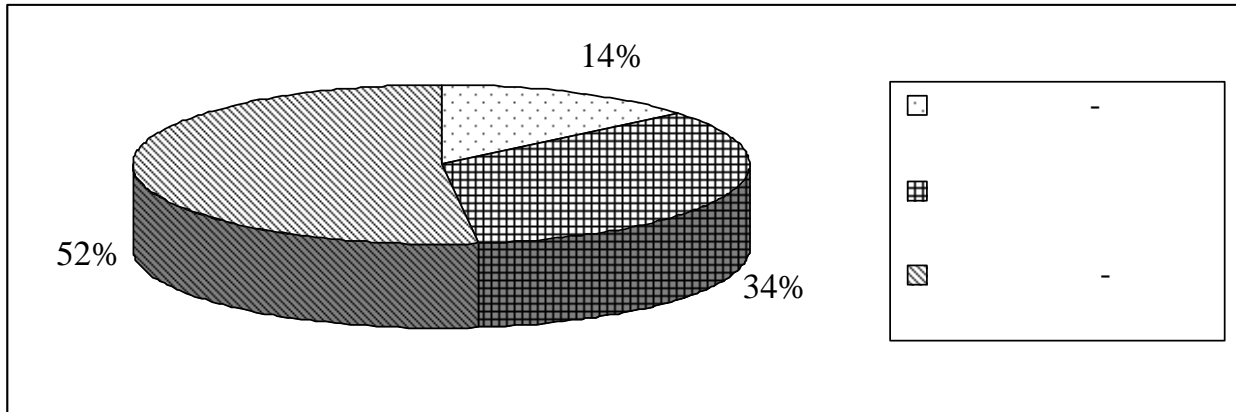
2 1917 . 1

| , |    |      |
|---|----|------|
|   | .  | %    |
|   | 4  | 6,1  |
|   | 2  | 3    |
|   | 6  | 9,1  |
|   | 11 | 16,6 |
|   | 1  | 1,5  |
|   | 1  | 1,5  |
|   | 1  | 1,5  |
|   | 3  | 4,6  |
|   | 1  | 1,5  |
|   | 4  | 6,1  |
|   | 1  | 1,5  |
|   | 2  | 3    |
|   | 1  | 1,5  |

|       |    |     |
|-------|----|-----|
| -     | 3  | 4,6 |
| - ( ) | 2  | 3   |
| - ,   | 1  | 1,5 |
| - ( ) | 2  | 3   |
|       | 1  | 1,5 |
| » « - | 3  | 4,6 |
| -     | 4  | 6,1 |
|       | 1  | 1,5 |
|       | 1  | 1,5 |
|       | 1  | 1,5 |
|       | 5  | 7,6 |
|       | 4  | 6,1 |
| :     | 66 | 100 |

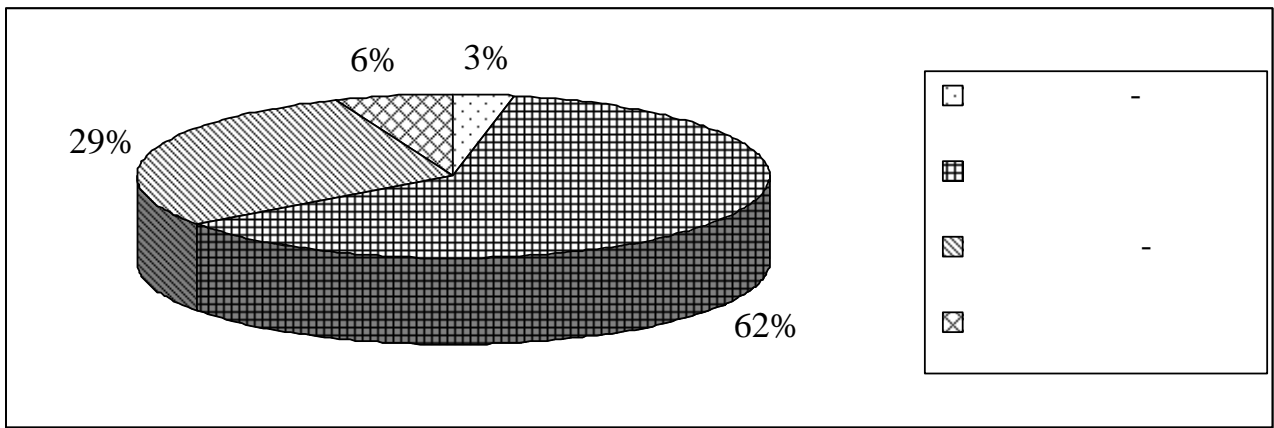
4 , 6%

1917 ., ( .1-2), ,



.1.

1917 .



.2.

1917 .

1917 ., ( - )

3%.

( - )  
29%

[8, .110].

[8, .1,16 ].

1. .  
1917 . / . // . - 1927. - 2. - .32-185.
2. . .  
1917 / . . // . .17:  
/ [ .  
. . . ] . - , 2001. - .159-165.
3. //  
. - 1917. - 29. - 11 . - .7.
4. . .  
/ . . ; [ . . . ] . - .: ,  
- , 1980. - 256 . ;  
. . . // . . . - .: , 1971. -  
463 .
5. . - .1788. - .2. - .154. -  
236 .
6.  
( - ) . - .1457. - .1. - .3. - 227 .

7. ( - ). - .127. - .254 . -  
.47. - 111 .
8. . - .1457. - .1. - .4. - 233 .
9. . - .1821. - .1. - .115. - 63 .
10. . - .145. - .3. - .2811. - 18 .
11.  
20 1917 . //
- . - 1917. - 17. - 5 . - .3.
12. . - .1457. - .1. - .1. - 36 .
13. [21 ...] //
- . - 1917. - 24. - 26 . - .2.
14. 4 //
- . - 1917. - 22. - 18 . - .4.
15. 4 //
- . - 32. - 10 . - .2-3.