
Шановні колеги!

Сучасна стратегія розвитку медичної галузі невід’ємно пов’язана з необхідністю переходу на світові стандарти якості в усіх напрямках медицини та освіти. Це вимагає широкого впровадження світової системи підготовки студентів за офіційними міжнародними тестами та протоколами діагностики, лікування та профілактики, як в учбові програми, так і в практику медичних установ.

З цією метою Університет почав впроваджувати новітні форми освіти з актуальних питань офтальмології та суміжних дисциплін за участі відомих професорів світових університетів. Цього року в рамках конференції «Алгоритми діагностики та лікування судинно-ендокринної патології. Діабетична ретинопатія. Глаукома. Міждисциплінарний підхід» буде вдруге проведено освітній курс «Відшарування сітківки та діабетична ретинопатія» за програмою міжнародного факультету університетів Німеччини, Швеції та США.

Сподіваюся, що такі заходи будуть корисними для студентів та молодих лікарів у їх професійній діяльності.

З повагою,

Зоя Веселовська
Головний редактор
Міжнародного науково-практичного журналу «Офтальмологія»,
Керівник Міжнародного освітнього проекту.

CONGRESS LANGUAGE:

- English
- Simultaneous Translation: Russian

REGISTRATION:

- On-line: chil.com.ua
- Dead line 14.04.2017
- April 20, 2017, 7:30–08:00

LOCATION OF COURSE:

Business Hotel "President Hotel"
str. Hospital, 12, Kyiv, Ukraine

REGISTRATION FEE:

- It includes also:
- Coffee Break
 - Syllabus with Cases
 - Diploma

Eastern Countries:

- Prior to January 1, 2017: **EUR 50 | USD 70**
- After January 1, 2017: **EUR 60 | USD 90**
- On site: **EUR 70 | USD 100**

Western Countries:

- Prior to Sept. 1, 2017: **EUR 90 | USD 135**
- After Sept. 1, 2017/on site: **EUR 120 | USD 175**

Conference coordinators:

- Larisa Litvinenko
tel: +380 (50) 181-55-99;
tel / fax: +380 (44) 287-07-20;
+380 (44) 562-50-97.
e-mail: litvinenko.lora@gmail.com

Inna Kechina:

- tel: +38 (063) 835-00-90; +38 (097) 413-06-60
- Fax: +38 (044) 562-50-97
- e-mail: oftkiev@i.ua

PANEL DISCUSSION:

*I Kreissig (Germany), F LaFranco (USA),
U Spandau (Sweden), Z Veselovskaya
(Ukraine)*

**8. COMPARISON OF PRESENT TECHNIQUES
FOR REPAIR OF RETINAL DETACHMENT**

- 8.1. Pneumatic retinopathy vs. minimal scleral
buckling vs. extensive scleral buckling vs.
prim. ppv: morbidity, economic implications
I Kreissig (Germany)

9. RETINOSCHISIS

- 9.1. Frequent misdiagnosis of retinoschisis
U Spandau (Sweden)

**10. QUIZ: PRESENTATION OF RETINAL
DETACHMENTS FOR DISCUSSION**

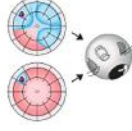
Presenter:
F LaFranco (USA)
Panel:
*I Kreissig (Germany), U Spandau (Sweden),
Z Veselovskaya (Ukraine)*

DISTRIBUTION OF DIPLOMAS

*I Kreissig (Germany)
Z Veselovskaya (Ukraine)*

PROGRAM

121. TEACHING COURSE with International Faculty RETINAL AND VITREOUS SURGERY



Kiev, Ukraine, April 20, 2017
in connection with the International Conference
"Vascular and Endocrine Eye Pathology"
Kiev, Ukraine, April 20–21, 2017

TOPICS WITH QUIZ

- Retinal Detachment: Diagnostics
- Scleral Buckling: Minimal (Segmental Sponge/s), Maximal (Cerclage)
- Pneumatic Retinotomy, Primary Vitrectomy
- Comparison of Surgical Techniques
- The Diabetic Eye: Diagnostics, Treatment
- Options, Results, Panel Discussion
- Quiz: Presentations of Retinal Detachments

SCIENTIFIC ORGANIZATION:

Univ.-Prof. Ingrid Kreissig, MD, Prof. h.c., Dept. of Ophthalmology, Univ.
Mannheim – Heidelberg, Theodor-Kutzer Ufer 1-3, 68167 Mannheim, Germany
<http://kreissig.uni-hd.de/>
e-mail: ingrid.kreissig@medma.uni-heidelberg.de

LOCAL ORGANIZATION:

Prof. Zoya Veselovskaya, MD,
Dept of Ophthalmology KMU,
Tolstogo Str. 9, Kiev, Ukraine
e-mail: zveselovskaya@yahoo.com
Fax: + 38 (044) 562-50-97

- 1-71. Detachment Course, Tumbanga, Germany 1991;
 1-72. Detachment Course, Tumbanga, Germany 1991;
 1-73. Detachment Course, Tumbanga, Germany 1991;
 1-74. Detachment Course, Tumbanga, Germany 1991;
 1-75. Detachment Course, Tumbanga, Germany 1991;
 1-76. Detachment Course, Tumbanga, Germany 1991;
 1-77. Detachment Course, Tumbanga, Germany 1991;
 1-78. Detachment Course, Tumbanga, Germany 1991;
 1-79. Detachment Course, Tumbanga, Germany 1991;
 1-80. Detachment Course, Tumbanga, Germany 1991;
 1-81. Detachment Course, Tumbanga, Germany 1991;
 1-82. Detachment Course, Tumbanga, Germany 1991;
 1-83. Detachment Course, Tumbanga, Germany 1991;
 1-84. Detachment Course, Tumbanga, Germany 1991;
 1-85. Detachment Course, Tumbanga, Germany 1991;
 1-86. Detachment Course, Tumbanga, Germany 1991;
 1-87. Detachment Course, Tumbanga, Germany 1991;
 1-88. Detachment Course, Tumbanga, Germany 1991;
 1-89. Detachment Course, Tumbanga, Germany 1991;
 1-90. Detachment Course, Tumbanga, Germany 1991;
 1-91. Detachment Course, Tumbanga, Germany 1991;
 1-92. Detachment Course, Tumbanga, Germany 1991;
 1-93. Detachment Course, Tumbanga, Germany 1991;
 1-94. Detachment Course, Tumbanga, Germany 1991;
 1-95. Detachment Course, Tumbanga, Germany 1991;
 1-96. Detachment Course, Tumbanga, Germany 1991;
 1-97. Detachment Course, Tumbanga, Germany 1991;
 1-98. Detachment Course, Tumbanga, Germany 1991;
 1-99. Detachment Course, Tumbanga, Germany 1991;
 1-100. Detachment Course, Tumbanga, Germany 1991;
 1-101. Detachment Course, Tumbanga, Germany 1991;
 1-102. Detachment Course, Tumbanga, Germany 1991;
 1-103. Detachment Course, Tumbanga, Germany 1991;
 1-104. Detachment Course, Tumbanga, Germany 1991;
 1-105. Detachment Course, Tumbanga, Germany 1991;
 1-106. Detachment Course, Tumbanga, Germany 1991;
 1-107. Detachment Course, Tumbanga, Germany 1991;
 1-108. Detachment Course, Tumbanga, Germany 1991;
 1-109. Detachment Course, Tumbanga, Germany 1991;
 1-110. Detachment Course, Tumbanga, Germany 1991;
 1-111. Detachment Course, Tumbanga, Germany 1991;
 1-112. Detachment Course, Tumbanga, Germany 1991;
 1-113. Detachment Course, Tumbanga, Germany 1991;
 1-114. Detachment Course, Tumbanga, Germany 1991;
 1-115. Detachment Course, Tumbanga, Germany 1991;
 1-116. Detachment Course, Tumbanga, Germany 1991;
 1-117. Detachment Course, Tumbanga, Germany 1991;
 1-118. Detachment Course, Tumbanga, Germany 1991;
 1-119. Detachment Course, Tumbanga, Germany 1991;
 1-120. Detachment Course, Tumbanga, Germany 1991;
 1-121. Detachment Course, Tumbanga, Germany 1991;
 1-122. Detachment Course, Tumbanga, Germany 1991;
 1-123. Detachment Course, Tumbanga, Germany 1991;
 1-124. Detachment Course, Tumbanga, Germany 1991;
 1-125. Detachment Course, Tumbanga, Germany 1991;
 1-126. Detachment Course, Tumbanga, Germany 1991;
 1-127. Detachment Course, Tumbanga, Germany 1991;
 1-128. Detachment Course, Tumbanga, Germany 1991;
 1-129. Detachment Course, Tumbanga, Germany 1991;
 1-130. Detachment Course, Tumbanga, Germany 1991;
 1-131. Detachment Course, Tumbanga, Germany 1991;
 1-132. Detachment Course, Tumbanga, Germany 1991;
 1-133. Detachment Course, Tumbanga, Germany 1991;
 1-134. Detachment Course, Tumbanga, Germany 1991;
 1-135. Detachment Course, Tumbanga, Germany 1991;
 1-136. Detachment Course, Tumbanga, Germany 1991;
 1-137. Detachment Course, Tumbanga, Germany 1991;
 1-138. Detachment Course, Tumbanga, Germany 1991;
 1-139. Detachment Course, Tumbanga, Germany 1991;
 1-140. Detachment Course, Tumbanga, Germany 1991;
 1-141. Detachment Course, Tumbanga, Germany 1991;
 1-142. Detachment Course, Tumbanga, Germany 1991;
 1-143. Detachment Course, Tumbanga, Germany 1991;
 1-144. Detachment Course, Tumbanga, Germany 1991;
 1-145. Detachment Course, Tumbanga, Germany 1991;
 1-146. Detachment Course, Tumbanga, Germany 1991;
 1-147. Detachment Course, Tumbanga, Germany 1991;
 1-148. Detachment Course, Tumbanga, Germany 1991;
 1-149. Detachment Course, Tumbanga, Germany 1991;
 1-150. Detachment Course, Tumbanga, Germany 1991;
 1-151. Detachment Course, Tumbanga, Germany 1991;
 1-152. Detachment Course, Tumbanga, Germany 1991;
 1-153. Detachment Course, Tumbanga, Germany 1991;
 1-154. Detachment Course, Tumbanga, Germany 1991;
 1-155. Detachment Course, Tumbanga, Germany 1991;
 1-156. Detachment Course, Tumbanga, Germany 1991;
 1-157. Detachment Course, Tumbanga, Germany 1991;
 1-158. Detachment Course, Tumbanga, Germany 1991;
 1-159. Detachment Course, Tumbanga, Germany 1991;
 1-160. Detachment Course, Tumbanga, Germany 1991;
 1-161. Detachment Course, Tumbanga, Germany 1991;
 1-162. Detachment Course, Tumbanga, Germany 1991;
 1-163. Detachment Course, Tumbanga, Germany 1991;
 1-164. Detachment Course, Tumbanga, Germany 1991;
 1-165. Detachment Course, Tumbanga, Germany 1991;
 1-166. Detachment Course, Tumbanga, Germany 1991;
 1-167. Detachment Course, Tumbanga, Germany 1991;
 1-168. Detachment Course, Tumbanga, Germany 1991;
 1-169. Detachment Course, Tumbanga, Germany 1991;
 1-170. Detachment Course, Tumbanga, Germany 1991;
 1-171. Detachment Course, Tumbanga, Germany 1991;
 1-172. Detachment Course, Tumbanga, Germany 1991;
 1-173. Detachment Course, Tumbanga, Germany 1991;
 1-174. Detachment Course, Tumbanga, Germany 1991;
 1-175. Detachment Course, Tumbanga, Germany 1991;
 1-176. Detachment Course, Tumbanga, Germany 1991;
 1-177. Detachment Course, Tumbanga, Germany 1991;
 1-178. Detachment Course, Tumbanga, Germany 1991;
 1-179. Detachment Course, Tumbanga, Germany 1991;
 1-180. Detachment Course, Tumbanga, Germany 1991;
 1-181. Detachment Course, Tumbanga, Germany 1991;
 1-182. Detachment Course, Tumbanga, Germany 1991;
 1-183. Detachment Course, Tumbanga, Germany 1991;
 1-184. Detachment Course, Tumbanga, Germany 1991;
 1-185. Detachment Course, Tumbanga, Germany 1991;
 1-186. Detachment Course, Tumbanga, Germany 1991;
 1-187. Detachment Course, Tumbanga, Germany 1991;
 1-188. Detachment Course, Tumbanga, Germany 1991;
 1-189. Detachment Course, Tumbanga, Germany 1991;
 1-190. Detachment Course, Tumbanga, Germany 1991;
 1-191. Detachment Course, Tumbanga, Germany 1991;
 1-192. Detachment Course, Tumbanga, Germany 1991;
 1-193. Detachment Course, Tumbanga, Germany 1991;
 1-194. Detachment Course, Tumbanga, Germany 1991;
 1-195. Detachment Course, Tumbanga, Germany 1991;
 1-196. Detachment Course, Tumbanga, Germany 1991;
 1-197. Detachment Course, Tumbanga, Germany 1991;
 1-198. Detachment Course, Tumbanga, Germany 1991;
 1-199. Detachment Course, Tumbanga, Germany 1991;
 1-200. Detachment Course, Tumbanga, Germany 1991;

REGISTRATION

On-line: chil.com.ua
 Dead line: 20.04.2017

Location:

Business Hotel "President Hotel"
 Str. Hospital, 12. Kiev, Ukraine

WELCOME

Z Veseļovskaya (Ukraine)
 I Kraissig (Germany)

1. DIAGNOSTICS OF RETINAL DETACHMENTS

Moderators:

I Kraissig (Germany)
 Z Zveselovskaya (Ukraine)

1.1 Lattice degeneration and breaks in fellow eye. What to do or not to do ?
 F LaFranco (USA)

1.2 Ambulatory binocular occlusion: Vitreous hemorrhage, retinal detachment
 U Spandau (Sweden)

1.3 The 4 Rules to find the primary break
 I Kreissig (Germany)

2. MINIMAL SCLERAL BUCKLING

2.1 Segmental buckle(s) without drainage: Indications, surgical technique (video), optimal tamponade, complications, long-term anatomic and functional results
 F LaFranco (USA)

3. MAXIMAL SCLERAL BUCKLING

3.1 Circular buckle/cerclage + drainage +/- segmental buckle +/- i.o. injection: Evolution, indications, complications, long-term results
 I Kreissig (Germany)

4. INTRAOCULAR GAS-OP

4.1. Pneumatic retinopathy for uncomplicated detachments
 U Spandau (Sweden)

5. VITRECTOMY

5.1. Primary vitrectomy: Indications, complications, results
 F LaFranco (USA)

5.2. Primary vitrectomy vs. scleral buckling: Results and economic implications
 Z Veseļovskaya (Ukraine)

6. MINIMAL SCLERAL BUCKLING

6.1.Reoperation: The 4 Rules to find the undetected break

6.2. How to minimize risk of PVR
 U Spandau (Sweden)

16:25 GROUP PHOTO

16:30 – 16:50 COFFEE /TEA BREAK
 U Spandau (Sweden)

16:50 – 19:00 7. THE DIABETIC EYE

Moderators:
 F LaFranco (USA)
 U Spandau (Sweden)

7.1. Classification of diabetic retinopathy
 Z Veseļovskaya (Ukraine)

7.2. Laser coagulation: Indications and results
 U Spandau (Sweden)

7.3. Intravitreal pharmacotherapy: Indications and results
 F LaFranco (USA)

7.4. New indication of Ozurdex in treatment of diabetic macular edema
 Z Veseļovskaya (Ukraine)