

... , * , *
*
**

(. 1).

8 3
:

9,73...9,84% Si, 3,27...3,4% u, 0,054...0,060% Mn, 0,067...0,093% Mg,
: 0,4, 0,92 1,45%.

[3],

6: 500±10°

5 ., 180±10°, 7 .

λ=0,6943 « -12» (, τ = 4 ,
2 , - 30%).*

18 200 .

Duramin-5 (25)

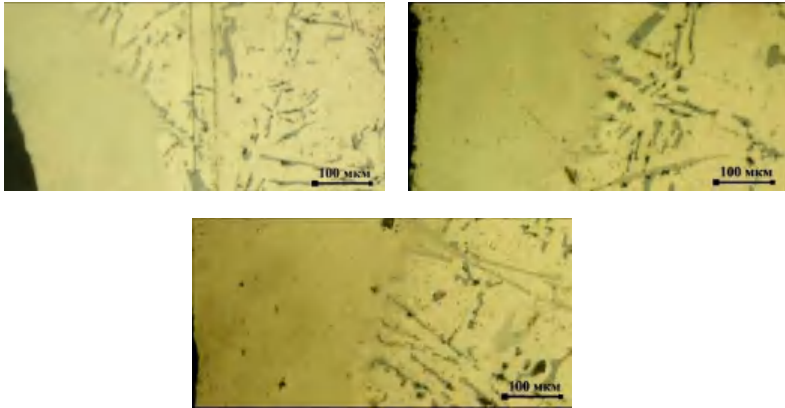
μ σ

*

() (. 1).

(. 2), (. 3),

8 3



. 1. () (): -
0,4% Fe, - 0,92% Fe, - 1,45% Fe

1

Fe, %					
		25	100	175	
0,40	μ_s	1640	1605	1600	975
	σ_s	527	515	514	172
0,92	μ_s	1660	1625	1720	994
	σ_s	534	523	548	120
1,45	μ_s	1680	1620	1735	1000
	σ_s	540	524	550	74

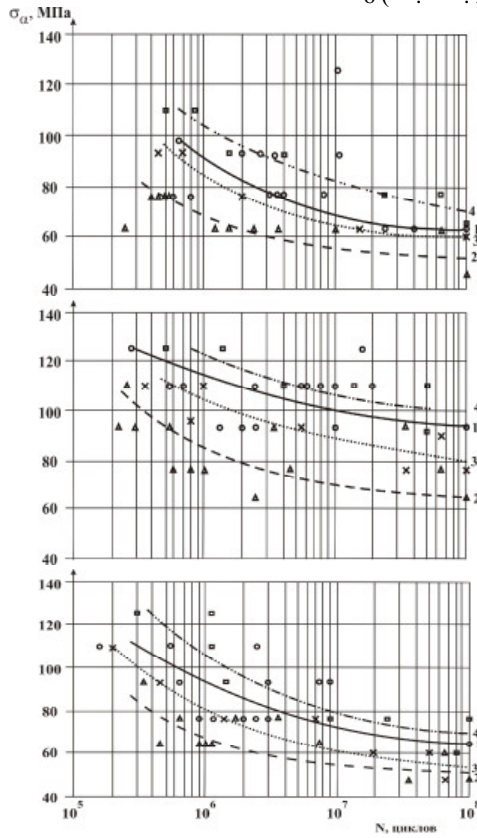
R ~ 0,32

(3 . 2).

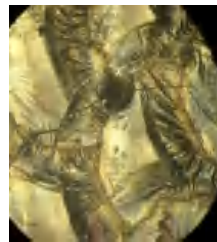
180° 10 .

(,)

6 (. . 2.)



. 2. 8 3: - 0,4% Fe, - 0,92% Fe,
 - 1,45% Fe; 1 - , 2 - , 3 -
 , 4 -

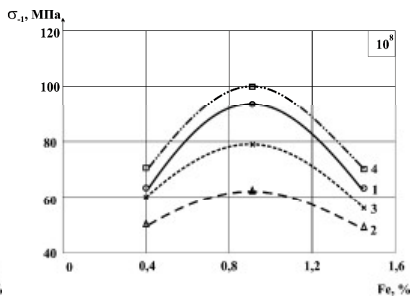
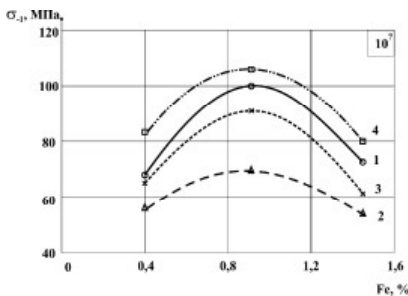


. 3.

: - 0,4%, - 0,92% , - 1,45%. 200

1,7) - (975...1000 1600...1735 , . .
), (74...172 514...550 , . . 3...7

1% (. 1, . 4).
 0,40 0,92% 82 105
 70 100 10^7 10^8 ,
 35%.



8 3 . 4.
 1 - , 2 - : - 10^7 , - 10^8 ;
 , 3 - , 4 -

1. , . .
 [] / . . , . . , . . - . :
 , 1983. - 28 .

2. , . . [] / . . , . . //
 , 2010. - . 15 - 20. . . . , . 55.

3. . 32929 , (2006) 22 1/00.
 [] / . . , . . , . .

u200800105; . 02.01.2008; . 10.06.2008,
 . 11.