

- 1150° (3-7%).
 (14%)
 [5] 04 14 3 1
 1,5 12 18 10 .
 1025° - 1050° .
 (.2).
 2

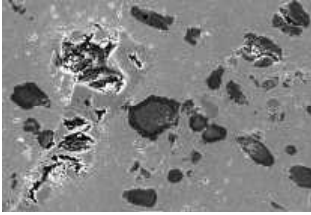
	, %	, %
	19	16
	27	1,5
	21	1,5
	23	6,3

04 14 3 1 . 30-15 15-7 .
 1100 1150 .
 = 3-7 % (> 1150)
 [1].
 = 14 %
 102-02
 1000- 5000 .
 : -

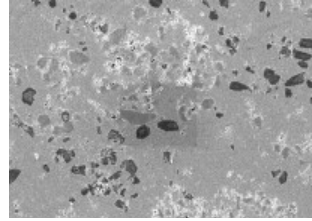
(.1).

(.1)

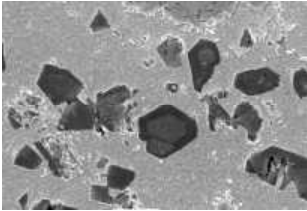
(.1).



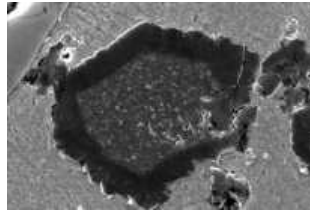
1000



500



2000



4000

. 1.
1100

[5],

(.1).

(.1).

1150

2),

