

[1-8],

40 ( ~850<sup>0</sup> )+

/ :

: Q 6,5·10<sup>8</sup> / <sup>2</sup>).

40

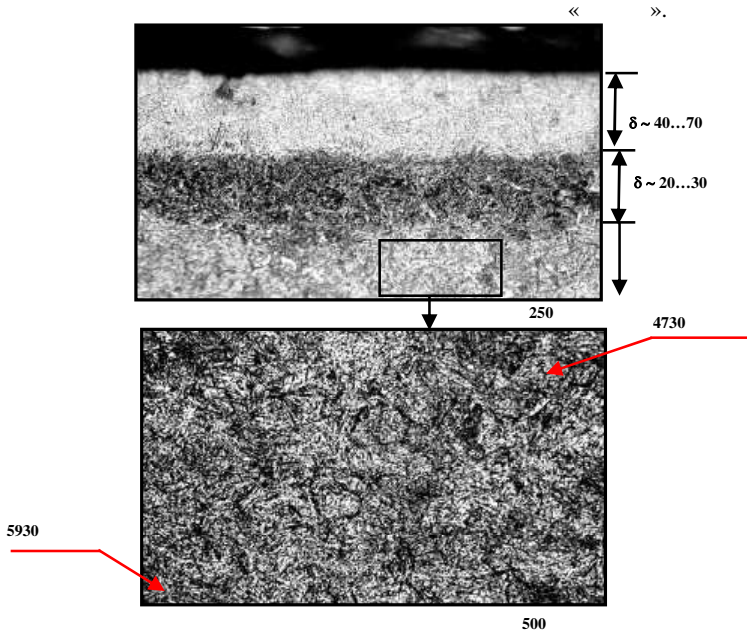
( ( , )

( , ) .1-

2.

70

, 1, .  
 ( 1,8 ).



.1. : , 250 : , 500.

( .2).

( $\rho \sim 2 \cdot 10^{11} \dots 4 \cdot 10^{11} \text{ }^{-2}$ ) (

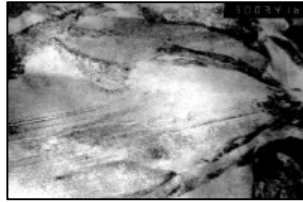
),

( $\rho \sim 2 \cdot 10^{10} \dots 3 \cdot 10^{10} \text{ }^{-2}$ ),

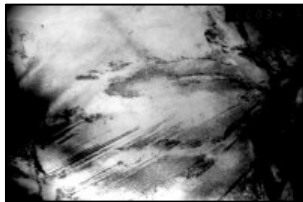
).



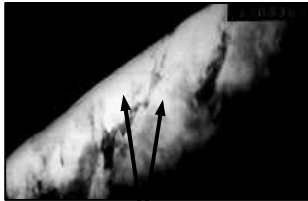
, 37000



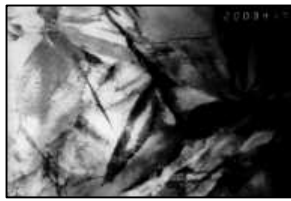
, 30000



, 20000



$h=0.29\dots0.62$ , 37000



, 20000

.2.

40 ,

0 ( .2 , ) 10 ( .2 , ) ( )

40

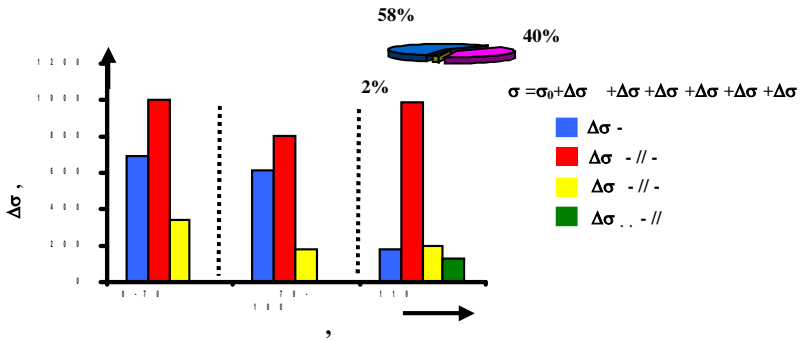
( , ) : 1)  $(\Delta\sigma)$  ( , )  
 ( , ) (  $\sigma_{0,2}, \sigma$  ); 2)

( 1 )

$\leftrightarrow$

( , ) ( , )  
 ), [9-18] ( .3),  
 (  $\Sigma\sigma_{0,2}$  )

2086 ( 1551 ),  
 $(\sigma_{0,2})$  ( ) -  
 $(\Delta\sigma / \sim 1000)$  ;  $(\Delta\sigma \sim 693)$  -  
 $(\Delta\sigma \sim 342)$  , -  
 . -  
 ( ) -  
 $(\Delta\sigma \sim 178)$  . ( ) -  
 $(\Delta\sigma \sim 882)$  )  $(\Delta\sigma \sim 199)$  .



.3. 40  
 ,  
 ( ) ( I-III, .3),  
 [19,20]:

$$= (2 \sigma \cdot \delta)^{-\frac{1}{2}},$$

$\times \frac{1}{2}$  ; - ; - , ,  
 $\sum \sigma_{0,2}$  ; - ,  
 , 1 ( (d) -  
 $\delta_t$ ).

( 1 )

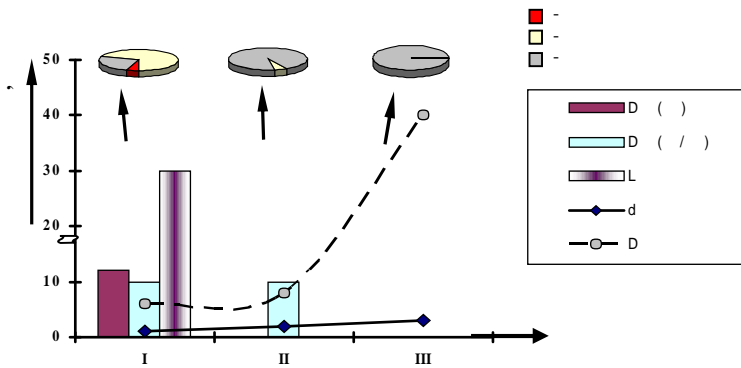
d ,	( I )			( II )			( III )		
	min		max	min		max	min		max
	1,0	5	13,3	1,7	7	18	2,5	10	20
$\Sigma\sigma$ ;	2086			1728			1551		
$\Sigma\sigma$ ,	-			-			1560		
$\bar{x}_{1/2}$	24,7	<u>52,5</u>	90,2	29,2	<u>56,5</u>	94,9	32	<u>63,9</u>	90,5

( .4) -

, -  
- ( , )

(V ,%)

:



.4.

(V ,%)

:

, ( ) -

( ) -

(D ; D / ); (L );

(D ; d - ) (I-III): I -

( $\delta \sim 70$  ), II - ( $\delta \sim 70 \dots 100$  ),

III- ( $\delta > 100$  ).

( 3...10%),  
 ( )  
 , -  
 , -  
 .  
 - 40 ( -  
 )  
 :  
 1,2-3,7  
 ( ) 1,4-4,3 ( ) -  
 , ( )  
 )- 1,8-3 .

1. . . , . . -  
 -  
 //  
 .- 1996.- 1.- C. 14-19.
2. . . -  
 //  
 .- 1997.- 7.- C. 2-6.
3. Steigerwald K. State of the art of electron beam technology for metall re-  
 moval, welding and heat treatment processes // Mach. Tool Design and Res.:  
 20-th Inter. Conf.- Birmingem, 1980.- P. 601 – 605.
4. Schiller S., Panzer S., Electron beams for thermal surface modification //  
 Thin Solid Films. – 1984. – Vol.118, 1. – P.85. – 92.
5. . . , . . , . . -  
 //  
 .- 1999.- .169, 11.- . 1243 – 1271.
6. / . . , . . -  
 , . . , . . .- .: , 1990. – 109 .

7. . . . . / . . .  
. . . . . //  
- 1991. - 3. - . 31 - 33.
8. . . . .  
. . . . .  
//  
- 1995. - 2. - C. 101-106.
9. . . . .  
// . . . . .  
- . . . . .  
, 1967. - . 255 - 260.
10. . . . . // . . . . .  
- . . . . . , 1972. - . 88 - 107.
11. . . . .  
. . . . .  
. . . . .  
, 1986. - 307 .
12. . . . .  
. . . . .  
// . . . . .  
. . . . .  
, 1973. - . 206 - 219.
13. . . . .  
// . . . . .  
. . . . . , 1973. - . 11 - 40.
14. Petch N. J. The cleavage strength of polycrystalline // J. Iron and Steel Inst. - 1953. - 173, 1. - P. 25 - 28.
15. Orowan E. Dislocation in Metals. - New York :AIME, 1954. - 103 p.
16. Ashby M. F. Mechanisms of deformation and fracture // Adv. Appl. Mech. - 1983. - 23. - P. 118 - 177.
17. . . . .  
. . . . .  
1966. - 187.
18. Ebellling R., Ashby M. F. Yielding and flow of two phase copper alloys // Phil. Mag. - 1966. - 13, 7. - P. 805 - 809.
19. . . . .  
. . . . .  
, 1979. - 176 .
20. . . . . / . . . . .  
. . . . . // . . . . .  
. . . . . , 1991. - . 13. - 5.  
- . 62 - 68.