

65.011.56

. . . , . . . , . . .

,

.

.

,

,

.

:

,

,

,

,

,

,

,

-

,

,

,

.

,

,

-

-

.

.

-

«

»

,

.

[1].

,

,

,

,

.

,

.

,

,

,

,

,

[1].

[2].

,

,

.

,

.

,

,

«

»,

«

.

».

«

»

,

,

».

,

«

,

«

»

,

,

,

,

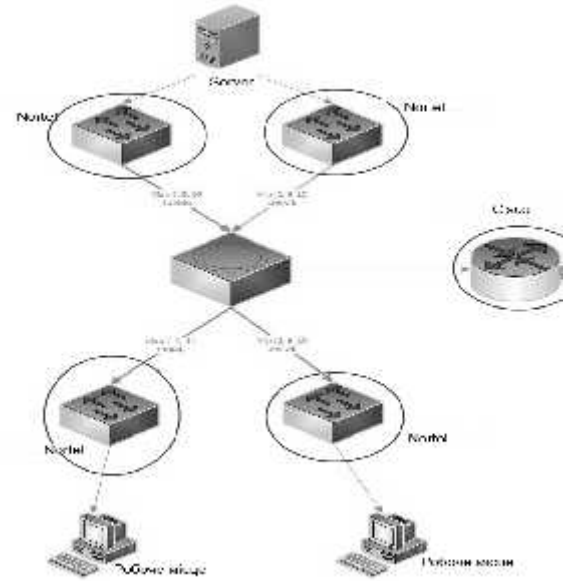
Nortel)

103.

, , : ( )  
«103»; [3].  
» . ; isco,

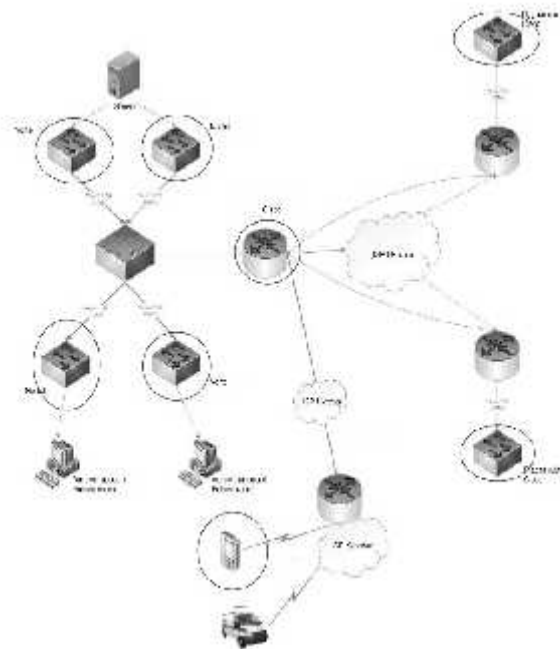
1998  
[4].

[3].



.2.

isco



.1.

isco,

( )

. 2.

(



; .

1. . . . , . . . , « »;
2. . . . , « »;
3. . . . , « »;
4. . . . « » ( « »).

14.11.2013

**ANALYSIS OF THE EFFICIENCY OF AUTOMATION CENTER FOR EMERGENCY MEDICAL CARE AND MEDICINE OF CATASTROPHES OF KIEV**

E. Losev, G. Vlasenko, V. Lotush

*In the article based on the analysis of efficiency of Automation Center for emergency medical care and medicine of catastrophes in Kiev suggested ways to improve the reliability of work of the Center, algorithm optimization, and also the efficiency of the process as a whole.*

**Keywords:** *Automation, development of algorithm, optimization, management system, software, workstation, techno-economic parameters, information services, databases, data processing.*