

621.396.967.15

. . . 1, . . . 1, . . . 2, . . . 2  
1  
2 « - »,

« ».  
« ».

: , , .  
( ) [1] 0-180°

[2]. ,

- [2],

[3]. [3]

., , : , ,

( ) - ( 90°)  
( 1°)  
[5, 6],

( ). ; -

.,

( ) .1.

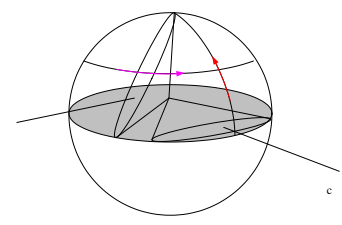
[7],

( ).

: , .1.

( ). ( ).

. 45°



45°.

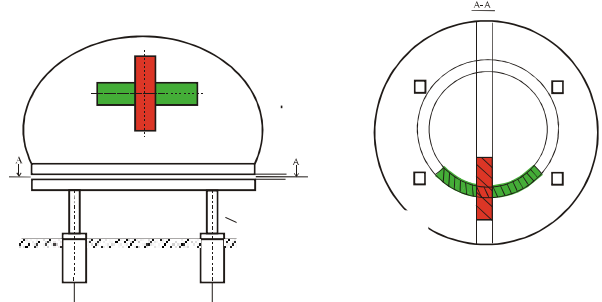
: -

« »,

1 1°. f( λ)

$$\theta \approx 0.5 \frac{\lambda}{L} \quad (1)$$

( )



«

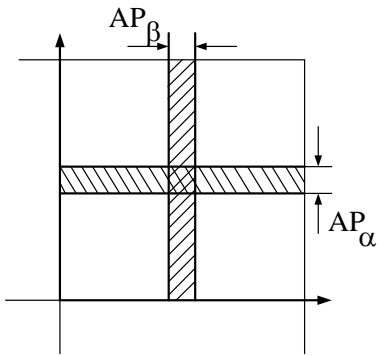
». « « » ( .2)

.3.

( α β, α

β -

),



.2.

«

»

3.

«

»

[4],

1.

«β»

«α»

2.

1981, .151.

3.

θβ

θα

«

»

2(69) - ..

2008. - .57-62.

4

4.

16-

« » 30

-9

2003 . - :

, « » , 2004 (

04.01 ). - .27-

32.

θ

25.11.2013

: - . . . . , . . . . , . . . .

**TO THE QUESTION OF PRINCIPLE OF CONSTRUCTION OF ARRAY OF SURFACE COMPLEX  
OF MANAGEMENT BY SPACE VEHICLES**

M.F. Pichugin, D.V. Karlov, A.P. Vereshchak, H.V. Lukashuk

*In the article the question of principle of construction of array of surface complex of management is examined by space vehicles. For combination of simultaneous search and accompaniment of space vehicle, in the article it is suggested to apply an array, on the surface of that the "cross of Milsa" is realized. The question of determination of geometrical parameters of array is also considered, on the surface of that the "cross of Milsa" is realized.*

**Keywords:** *antennaya lattices, koltsevaya antennaya lattices, Chief maximum.*