

358.4 : 656.7

. . .

,

:

()

()

[1, 2, 3],

8...10

),

() ,

(

Excel,

SAS, SUSTAT,
SPSS, STSC, Statistika, Minitab, WinSTAT, STADIA,
[4].

; : “ ”
; [6].

[5].

()
()
Excel [6], [6].

Excel.

Systat [4]. Statistica, Statgraphics, SPSS,

: *t*- “ ”
Excel.
[6].

[4]:

Excel.

$x_1, x_2, x_3, \dots, x_{t-1}, x_t, x_{t+1}, \dots, x_{n-1}$
 $x_2, x_3, \dots, x_{t-1}, x_t, x_{t+1}, \dots, x_n$.

. 1.

Saab 340B

32 (2006...2014) [8]

()

[4].

$$k = \frac{n}{N}, \quad (1)$$

(-)

$n -$

$N -$

1

Saab 340B

	k		k		k		k
1	0,0122	9	0,0112	17	0,0256	25	0,0278
2	0,0122	10	0,0169	18	0,0192	26	0,0370
3	0,0325	11	0,0449	19	0,0164	27	0,0463
4	0,0203	12	0,0337	20	0,0164	28	0,0370
5	0,0081	13	0,0449	21	0,0164	29	0,0349
6	0,0203	14	0,0705	22	0,0246	30	0,0698
7	0,0244	15	0,0577	23	0,0263	31	0,0581
8	0,0203	16	0,0321	24	0,0175	32	0,0465

ARIMA [7].

95%

Excel

“ ” “ ”
 Excel [7]

ARMA
 ARIMA,

” Excel),

(.1)
 (1...16 17...32),

32

[4].

30 %,
 (75...90 %).

() ARMA ARIMA.

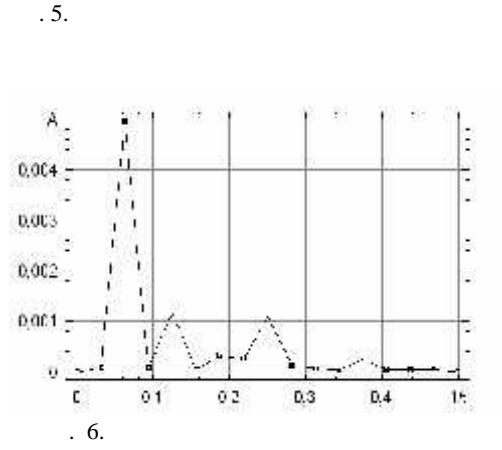
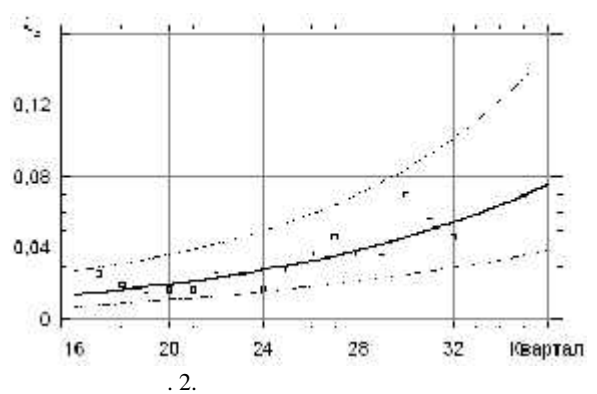
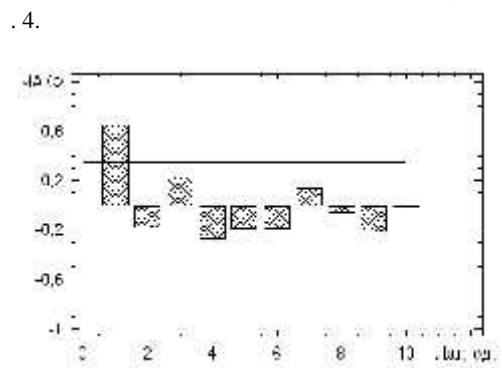
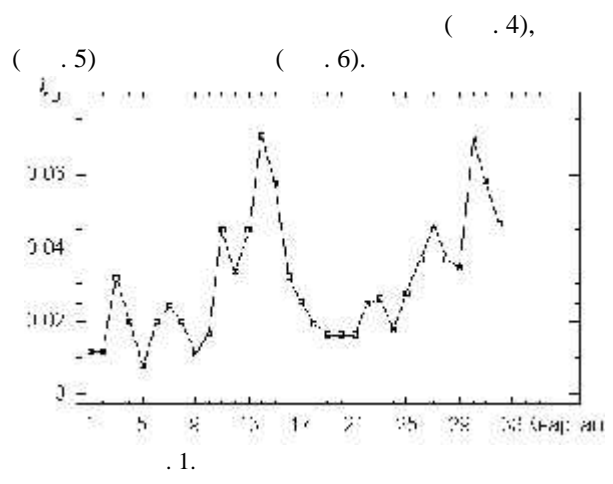
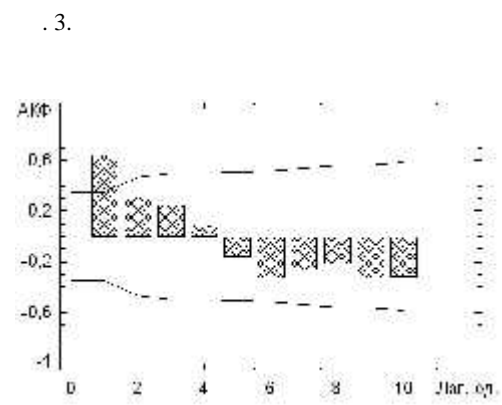
17...32

71 %.

(.2).

(.1)

” “
 ” “ 1
 ” “
 0,0126; 0,0187; 0,0238 0,0288
 14, 15, 30 31
 . 3.3.
 ,
 48%



ARMA ARIMA.

1.

2.

ARMA ARIMA.

